

LEGEND

- Study Area
- 1% AEP Flood Inundation Extent
- Potential Additional Inundation Due to Wave Runup at 1% AEP
- First Nation Settlement Lands - Surveyed
- 50% AEP Extent
- 5m Index LiDAR Contour
- 1m LiDAR Contour
- Highway

686.85 m Inundation Level
 689.32 m Inundation Level with Wave Runup

NOTE(S)

1. PROJECTION: NAD 1983 YUKON ALBERS; VERTICAL DATUM: CGVD2013
2. ELEVATIONS IN METRES ABOVE SEA LEVEL (MSL); DERIVED FROM 2023 LIDAR.
3. PROJECT PARTIALLY FUNDED BY THE GOVERNMENT OF CANADA.
4. WAVE RUNUP EXTENTS BASED ON TYPICAL SHORELINE TRANSECTS. BERMS, OTHER STRUCTURES, OR VEGETATION THAT MAY INFLUENCE WAVE ACTION WERE NOT CONSIDERED.

REV A - ISSUED FOR REVIEW

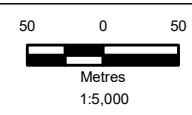
REFERENCE(S)

1. CONTAINS INFORMATION LICENSED UNDER THE OPEN GOVERNMENT LICENCE - YUKON, CANADA.
2. IMAGERY PROVIDED BY GOVERNMENT OF YUKON (2023)

DRAFT - FOR REVIEW ONLY



**Morley Bay Study Area
Estimated 1% Annual Exceedence
Probability (AEP) Event**



May 2024

Figure 6.2-6

IF THIS MEASUREMENT DOES NOT MATCH WHAT IS SHOWN, THE SHEET SIZE HAS BEEN MODIFIED FROM ANSI B