

- LEGEND**
- Study Area
  - Detailed Mapsheet Extent
  - First Nation Settlement Lands - Surveyed
  - Highway
  - Local Road

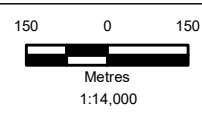
- NOTE(S)**
1. PROJECTION: NAD 1983 YUKON ALBERS
  2. PROJECT PARTIALLY FUNDED BY THE GOVERNMENT OF CANADA

REV 0 - ISSUED AS FINAL (24/09/13)

- REFERENCE(S)**
1. CONTAINS INFORMATION LICENSED UNDER THE OPEN GOVERNMENT LICENCE - YUKON, CANADA.
  2. IMAGERY GOVERNMENT OF YUKON
  - SOURCE: ESRI, MAXAR, EARTHSTAR GEOGRAPHICS, AND THE GIS USER COMMUNITY
  3. ADDITIONAL IMAGERY PROVIDED BY GOVERNMENT OF YUKON (2023)



**Deadman Creek Study Area**



September 2024

Figure 4.0

IF THIS MEASUREMENT DOES NOT MATCH WHAT IS SHOWN, THE SHEET SIZE HAS BEEN MODIFIED FROM A4 (ANSI B)