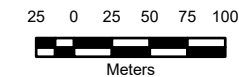


LEGEND:

- 657.00 Inundation Levels
- (657.18) Inundation Levels with Wave Runup
- Bridge
- ⬠ Culvert
- Major Road
- Local Road
- 5m Index LIDAR Contour
- 1m LIDAR Contour
- - - Average Annual Peak Water Level Inundation Extent
- ⌈ Limit of Aerial Imagery
- 5% AEP Climate Change Flood Inundation Boundary
- Potential Additional Inundation Due to Wave Runup for the 5% AEP Climate Change Flood
- ▨ First Nation Settlement Lands - Surveyed

NOTES:

1. AEP corresponds to the Annual Exceedance Probability.
2. Inundation extents are based on LIDAR based elevation model from June 2022, when the LIDAR data was captured. LIDAR data provided by Yukon Government and validated by Natural Resources Canada. Changes to the ground surface after June 2022, or temporary flood protection works that were removed prior to June 2022 are not represented in the inundation extents.
3. Ground surface representation is provided at a 1m spatial resolution. Features smaller than this resolution may not be well-represented.
4. Imagery provided by the Yukon Government, captured in June 2022.
5. Average annual peak water level inundation extent based on LIDAR based elevation model.
6. This project is funded in part by the Government of Canada.



SCALE: 1:5,000 METRIC 11"x17"

All units are metric and in metres unless otherwise specified. Transverse Mercator Projection, NAD83 Yukon Albers CSRS. Elevations are in metres above sea level (MSL). Canadian Geodetic Vertical Datum 2013 (CGVD2013).

0	24/04/29	ISSUED AS FINAL	ALW	BJI
NO.	YYMMDD	DESCRIPTION	ISSUED BY	CHECK BY

REVISIONS / ISSUE



SOUTHERN LAKES FLOOD MAPPING STUDY

ESTIMATED 5% ANNUAL EXCEEDANCE PROBABILITY (AEP) EVENT UNDER CLIMATE CHANGE CONDITIONS - MARSH LAKE

APRIL 2024 SHEET 55 OF 56 REV: 0