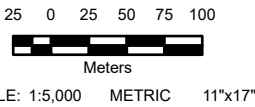


LEGEND:

657.00	Inundation Level
(657.18)	Inundation Level with Wave Runup
	Bridge
	Culvert
	Major Road
	Local Road
	5m Index LiDAR Contour
	1m LiDAR Contour
	Average Annual Peak Water Level Inundation Extent
	0.5% AEP Flood Inundation Boundary
	Potential Additional Inundation Due to Wave Runup for the 0.5% AEP Flood
	First Nation Settlement Lands - Surveyed

- NOTES:**
- AEP corresponds to the Annual Exceedance Probability.
 - Inundation extents are based on LiDAR based elevation model from June 2022, when the LiDAR data was captured. LiDAR data provided by Yukon Government and validated by Natural Resources Canada. Changes to the ground surface after June 2022, or temporary flood protection works that were removed prior to June 2022 are not represented in the inundation extents.
 - Ground surface representation is provided at a 1m spatial resolution. Features smaller than this resolution may not be well-represented.
 - Imagery provided by the Yukon Government, captured in June 2022.
 - Average annual peak water level inundation extent based on LiDAR based elevation model.
 - This project is funded in part by the Government of Canada.



All units are metric and in metres unless otherwise specified.
 Transverse Mercator Projection, NAD83 Yukon Albers CSRS.
 Elevations are in metres above sea level (MSL).
 Canadian Geodetic Vertical Datum 2013 (CGVD2013).

0	24/04/29	ISSUED AS FINAL	ALW	BJI
NO.	YYMMDD	DESCRIPTION	ISSUED BY	CHECK BY

REVISIONS / ISSUE	
SOUTHERN LAKES FLOOD MAPPING STUDY	
ESTIMATED 0.5% ANNUAL EXCEEDANCE PROBABILITY (AEP) EVENT LAKE LABERGE	
APRIL 2024	SHEET 33 OF 34 REV: 0