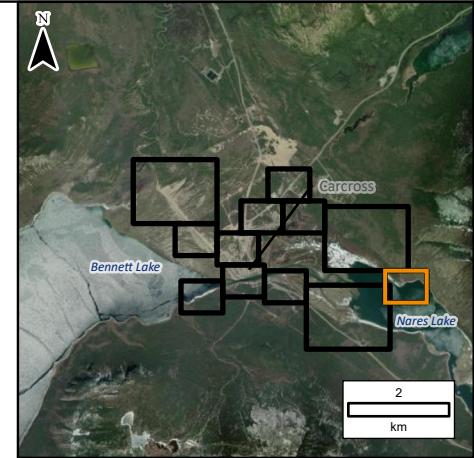
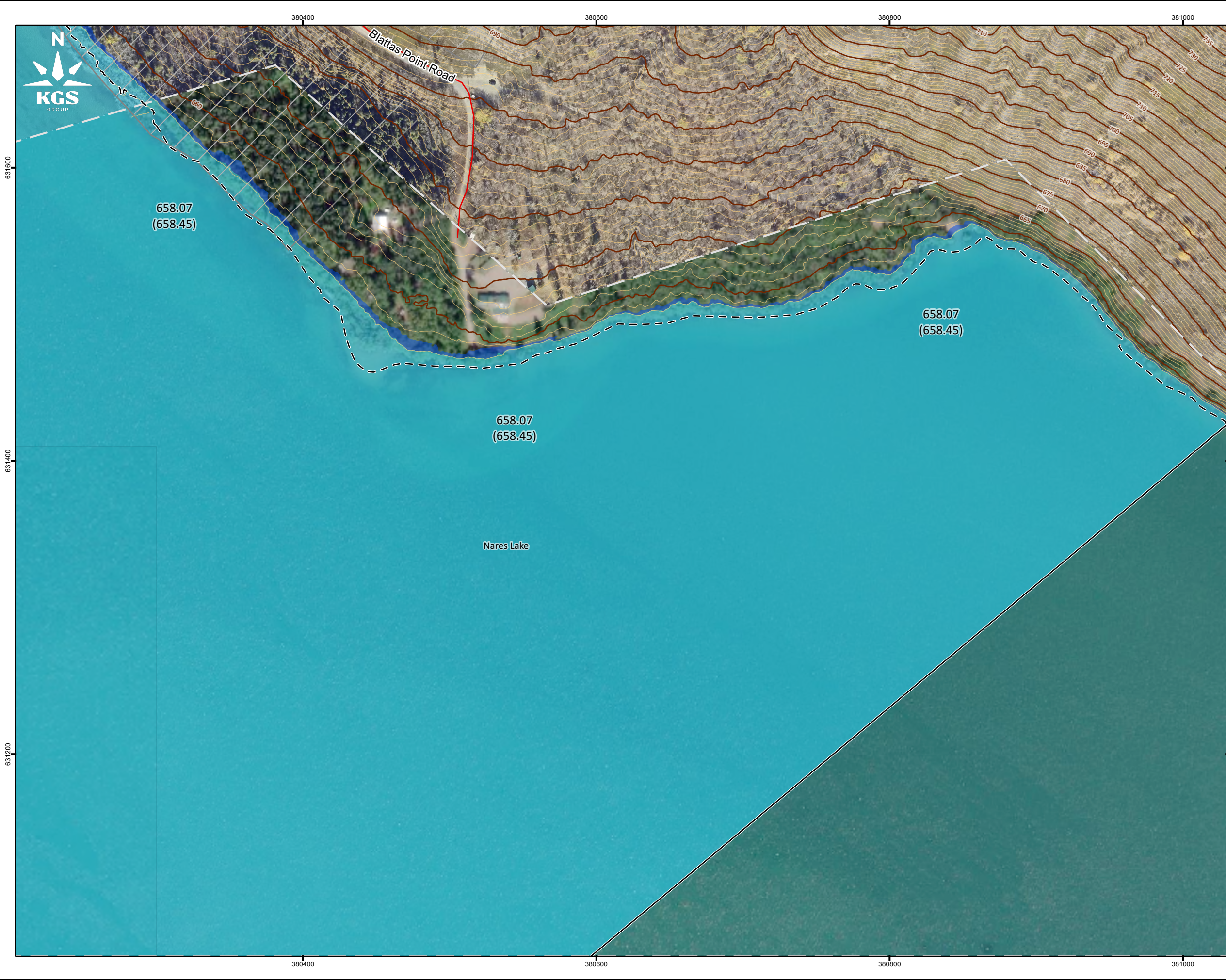


Portions of data Produced by KGS Group, under Licence with the Government of Yukon. Contains information licensed under the Open Government Licence - Yukon.

File Name: P:\Projects\2022\22-2708-001\Design\GIS\GISData\AvcPro\Inundation Mapping\Inundation Mapping\Inundation Mapping.aprx 22-2708-001-Carcross 1p AEP 11"x17" PLOT SCALE 1:1

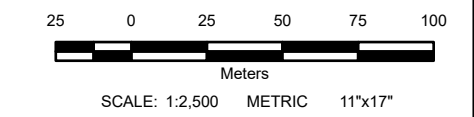


**LEGEND:**

- 657.00 Inundation Level
- (657.18) Inundation Level with Wave Run Up
- Bridge
- ⬠ Culvert
- Major Road
- Local Road
- 5m Index LiDAR Contour
- 1m LiDAR Contour
- Extent of Mapping
- - - Average Annual Peak Water Level Inundation Extent
- Limit of Aerial Imagery
- 1% AEP Flood Inundation Boundary
- Potential Additional Inundation Due to Wave Runup for the 1% AEP Flood
- ▨ First Nation Settlement Lands - Surveyed

**NOTES:**

1. AEP corresponds to the Annual Exceedance Probability.
2. Inundation extents are based on LiDAR based elevation model from October 2019, when the LiDAR data was captured. LiDAR data provided by Yukon Government and validated by Natural Resources Canada. Changes to the ground surface after October 2019, or temporary flood protection works that were removed prior to October 2019 are not represented in the inundation extents.
3. Ground surface representation is provided at a 1m spatial resolution. Features smaller than this resolution may not be well-represented.
4. Imagery provided by the Yukon Government and ESRI, captured in October 2019 and July 20, 2021, respectively.
5. Average annual peak water level inundation extent based on 2004 aerial photos provided by the Yukon Government.
6. This project is funded in part by the Government of Canada.



All units are metric and in metres unless otherwise specified. Transverse Mercator Projection, NAD83 Yukon Albers CSRS. Elevations are in metres above sea level (MSL). Canadian Geodetic Vertical Datum 2013 (CGVD2013).

0	24/04/29	ISSUED AS FINAL	ALW	BJI
NO.	YYMMDD	DESCRIPTION	ISSUED BY	CHECK BY

REVISIONS / ISSUE

**SOUTHERN LAKES FLOOD MAPPING STUDY**

**ESTIMATED 1% ANNUAL EXCEEDANCE PROBABILITY (AEP) EVENT CARCROSS**

APRIL 2024	SHEET 12 OF 12	REV: 0
------------	----------------	--------