

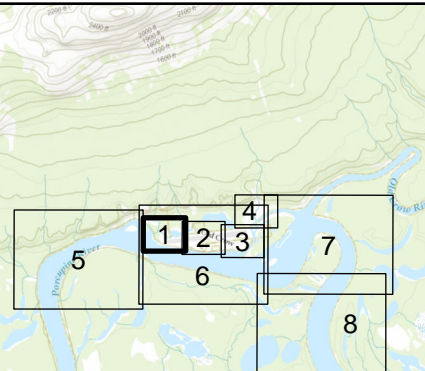


186900 187000 187100 187200 Panel 6 187300 187400 187500 187600

1473600
1473500
1473400
Panel 5
1473300
187000
1473100

1473800
1473700
Panel 2
1473600
1473500
1473400
1473300

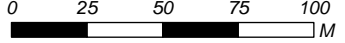



- INFRASTRUCTURE
- ROAD
- MAJOR CONTOUR AT 5M INTERVAL
Labelled with elevation in metres
- MAJOR CONTOUR AT 1M INTERVAL
Labelled with elevation in metres
- MODELLED CROSS-SECTION
- 40757 STATIONING (*Labelled in metres*)
- 246.43 WATER SURFACE ELEVATION (*Labelled in metres*)
- INUNDATION EXTENT
- - VUNTUT GWITCHIN FIRST NATION SETTLEMENT LAND
- ← FLOW DIRECTION

DRAFT

DATA SOURCES: REFER TO NOTES ON INDEX MAP

SCALE - 1:2,500

Coordinate System: NAD 1983 CSRS YUKON ALBERS
Units: METRES; Vertical Datum: CGVD2013 (CGG2013a)

Job: 1008777	Date: 28-JAN-2025
--------------	-------------------

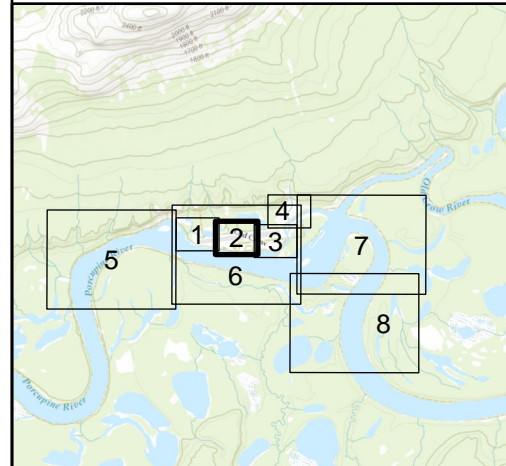
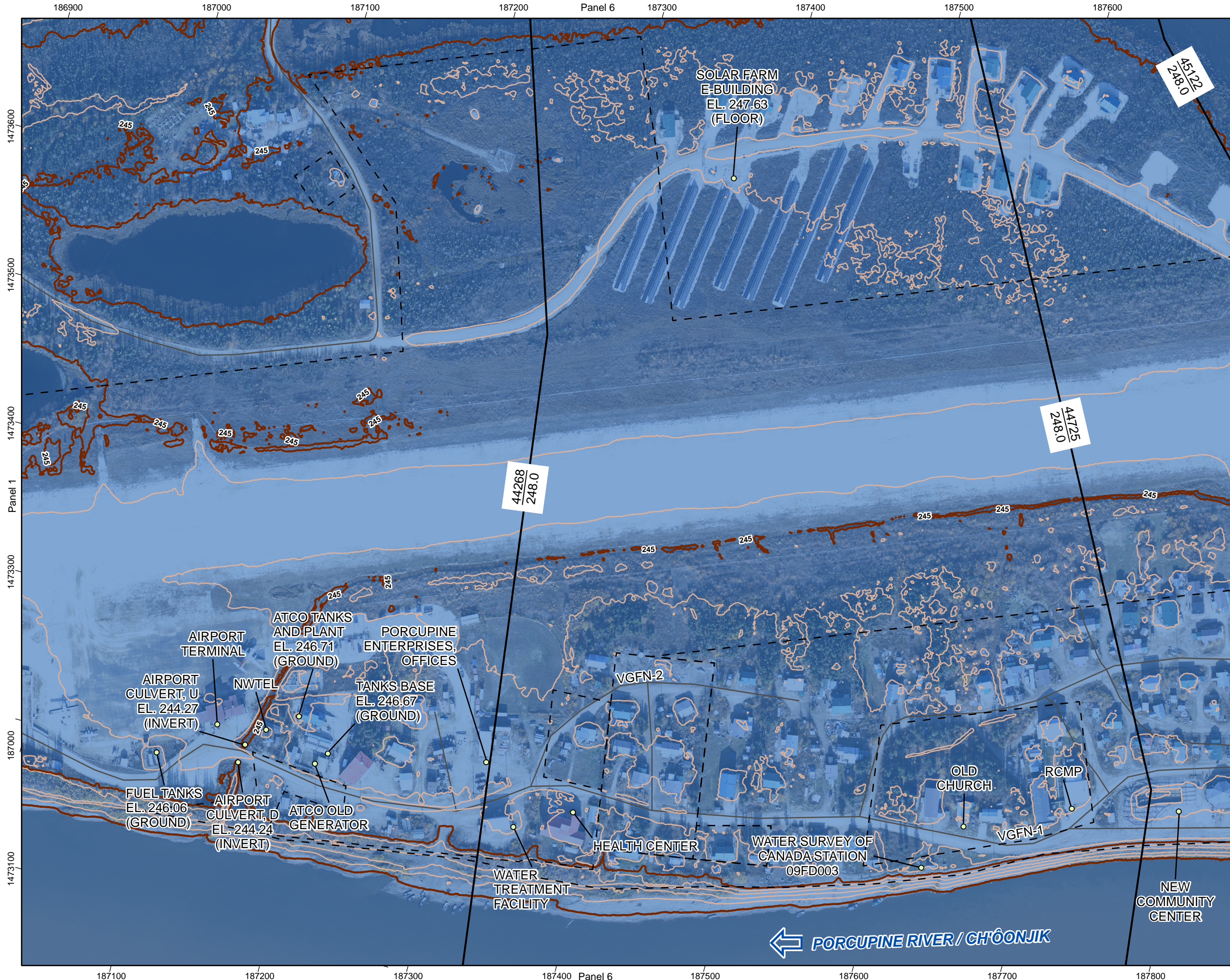
OLD CROW FLOOD MAPPING

INUNDATION EXTENT

0.5% ICE JAM ANNUAL EXCEEDANCE PROBABILITY

SHEET 1 of 8

JXD, \\mairfile-van\Projects\Active\1008777\Old_Crow\95_GIS\1008777_JXD_FloodMapping_2p5k_R1.aprx

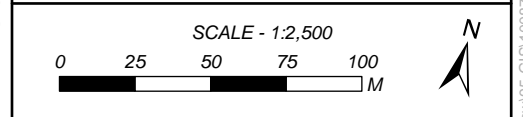


- INFRASTRUCTURE
- ROAD
- MAJOR CONTOUR AT 5M INTERVAL
Labelled with elevation in metres
- MAJOR CONTOUR AT 1M INTERVAL
Labelled with elevation in metres
- MODELLED CROSS-SECTION
- 40757
246.43 STATIONING (*Labelled in metres*)
- WATER SURFACE ELEVATION
(Labelled in metres)
- INUNDATION EXTENT
- - VUNTUT GWITCHIN FIRST NATION
- - SETTLEMENT LAND

← FLOW DIRECTION

DRAFT

DATA SOURCES: REFER TO NOTES ON INDEX MAP

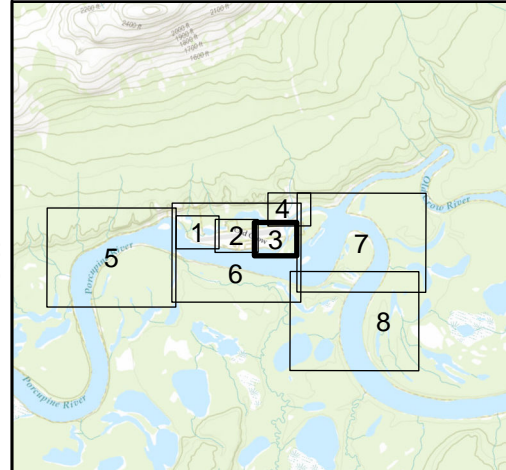
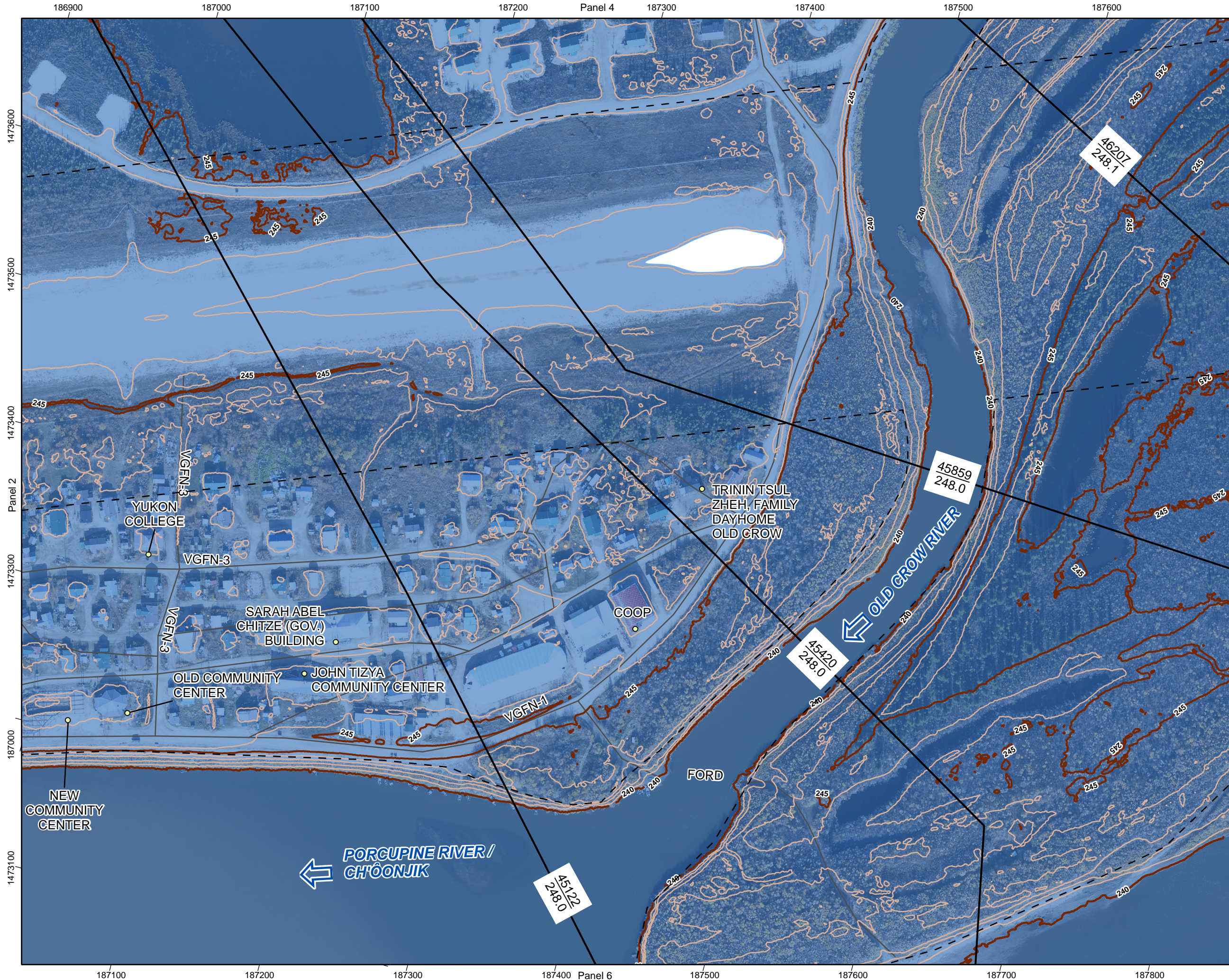


Coordinate System: NAD 1983 CSRS YUKON ALBERS
Units: METRES; Vertical Datum: CGVD2013 (CGG2013a)

Job: 1008777 Date: 28-JAN-2025

OLD CROW FLOOD MAPPING
INUNDATION EXTENT
0.5% ICE JAM ANNUAL
EXCEEDANCE PROBABILITY

JXD, \\miamifile-van\Projects\Active\1008777\Old_Crow\95_GIS\1008777_JXD_FloodMapping_2p5k_R1.aprx

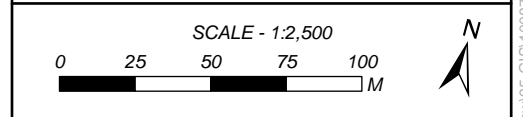


- INFRASTRUCTURE
- ROAD
- MAJOR CONTOUR AT 5M INTERVAL
Labelled with elevation in metres
- MAJOR CONTOUR AT 1M INTERVAL
Labelled with elevation in metres
- MODELLED CROSS-SECTION
- 40757 / 246.43 STATIONING (*Labelled in metres*)
- 246.43 WATER SURFACE ELEVATION (*Labelled in metres*)
- INUNDATION EXTENT
- - VUNTUT GWITCHIN FIRST NATION
- - SETTLEMENT LAND

← FLOW DIRECTION

DRAFT

DATA SOURCES: REFER TO NOTES ON INDEX MAP

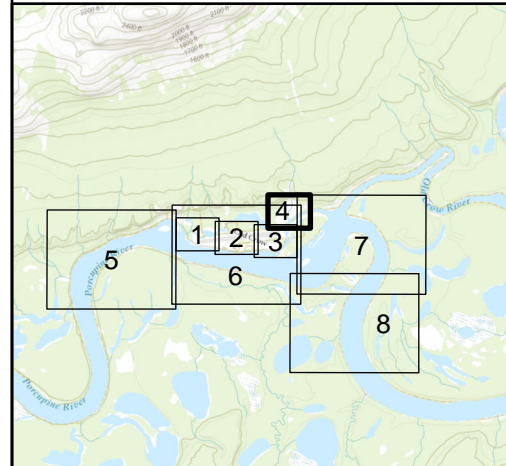
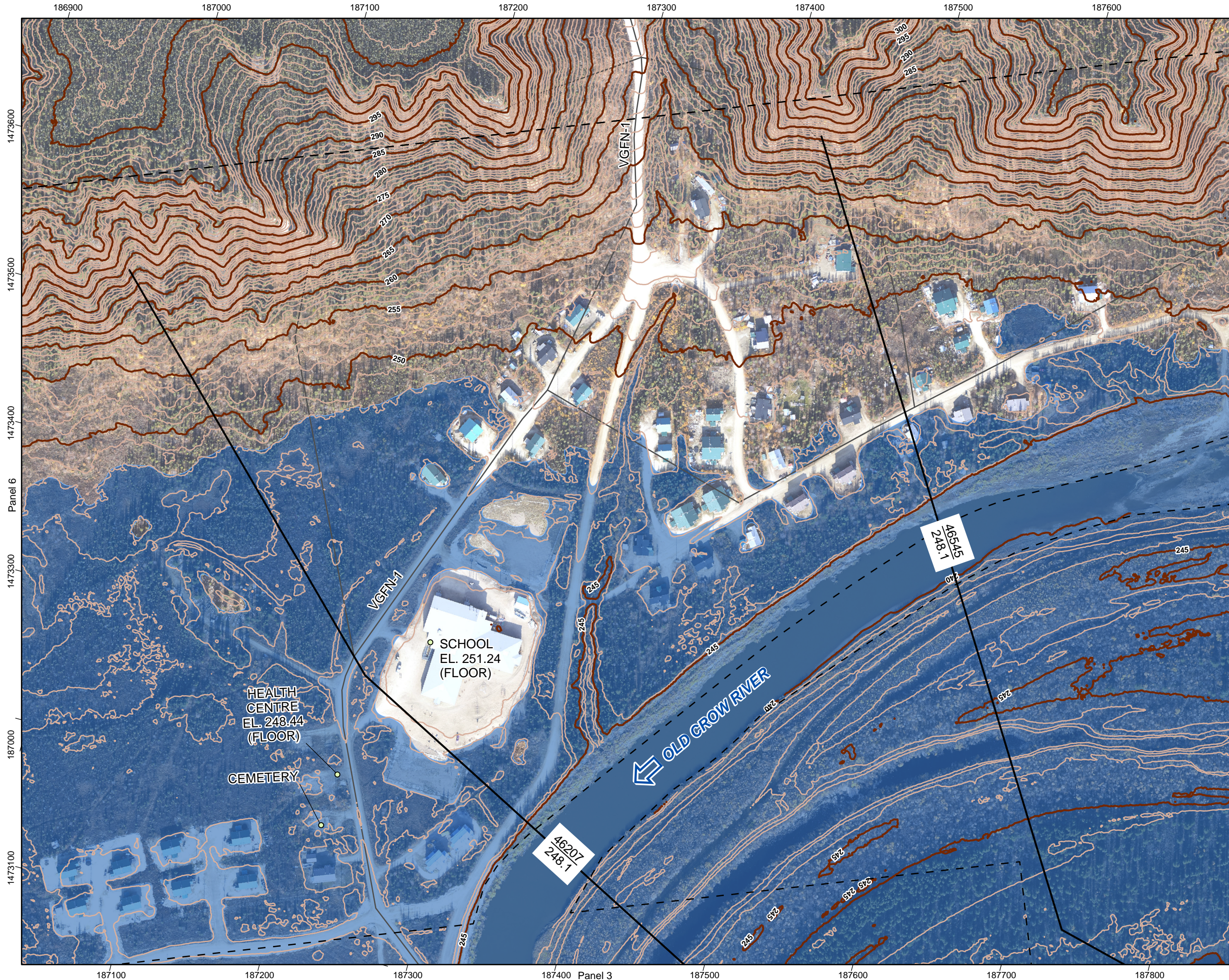


Coordinate System: NAD 1983 CSRS YUKON ALBERS
Units: METRES; Vertical Datum: CGVD2013 (CGG2013a)

Job: 1008777 | Date: 28-JAN-2025

OLD CROW FLOOD MAPPING
INUNDATION EXTENT
0.5% ICE JAM ANNUAL
EXCEEDANCE PROBABILITY

JXD, \\miamifile-van\Projects\Active\1008777\Old_Crow\95_GIS\1008777_JXD_FloodMapping_2p5k_R1.aprx

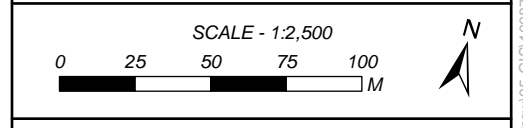


- INFRASTRUCTURE
- ROAD
- MAJOR CONTOUR AT 5M INTERVAL
Labelled with elevation in metres
- MAJOR CONTOUR AT 1M INTERVAL
Labelled with elevation in metres
- MODELLED CROSS-SECTION
- 40757 / 246.43 STATIONING (*Labelled in metres*)
- WATER SURFACE ELEVATION
(Labelled in metres)
- INUNDATION EXTENT
- - VUNTUT GWITCHIN FIRST NATION SETTLEMENT LAND

← FLOW DIRECTION

DRAFT

DATA SOURCES: REFER TO NOTES ON INDEX MAP

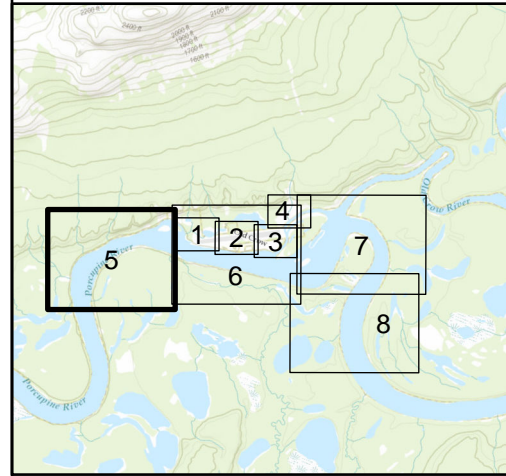
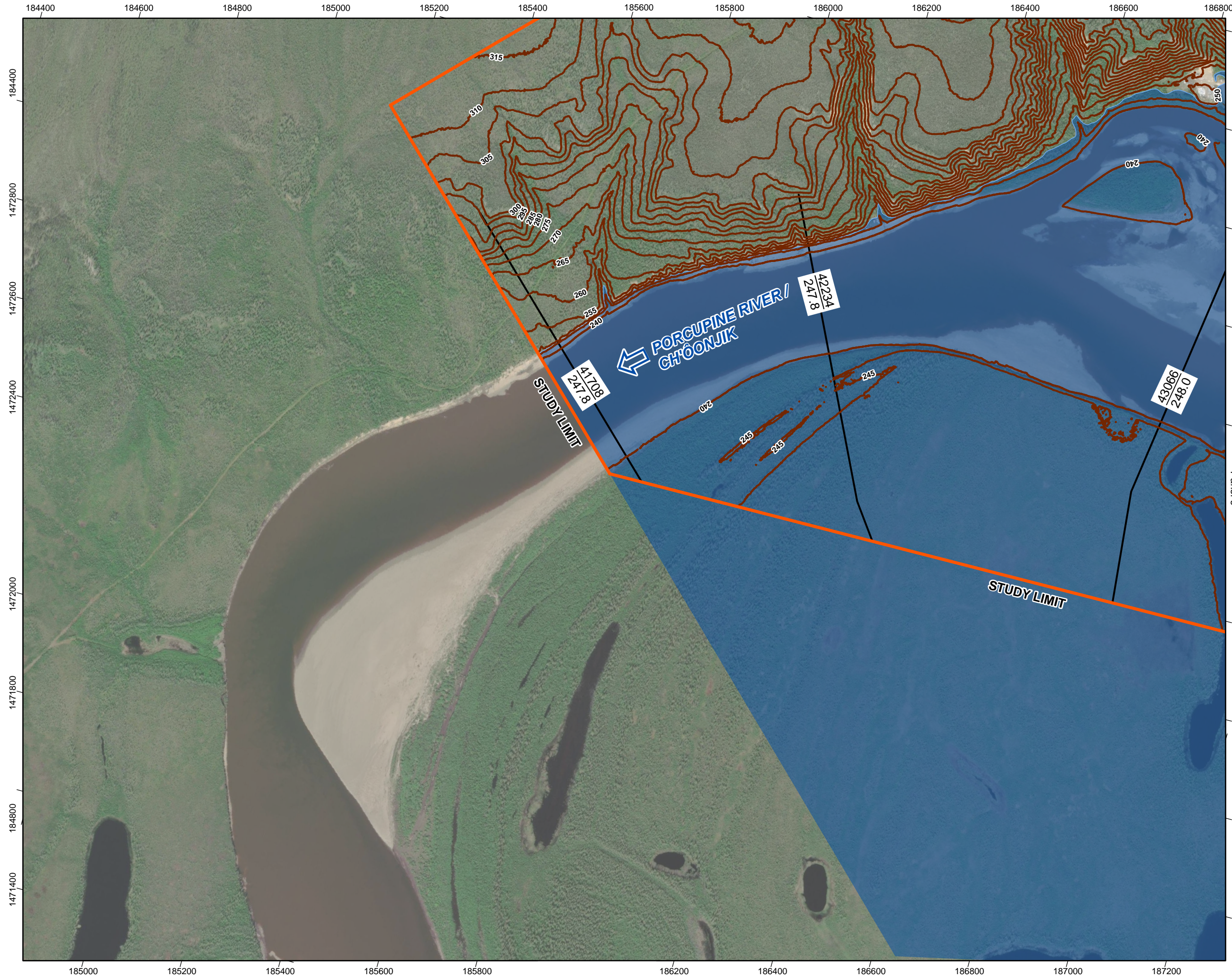


Coordinate System: NAD 1983 CSRS YUKON ALBERS
Units: METRES; Vertical Datum: CGVD2013 (CGG2013a)

Job: 1008777 Date: 28-JAN-2025

OLD CROW FLOOD MAPPING
INUNDATION EXTENT
0.5% ICE JAM ANNUAL
EXCEEDANCE PROBABILITY

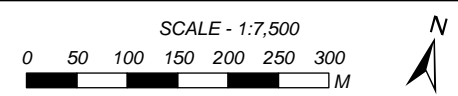
JXD, \\nhamfile-van\Projects\Active\1008777\Old_Crow\95_GIS\1008777_JXD_FloodMapping_2p5k_R1.aprx



- ROAD
- STUDY LIMIT
- MAJOR CONTOUR AT 5M INTERVAL
Labelled with elevation in metres
- MODELLED CROSS-SECTION
- 40757 / 246.43 STATIONING (*Labelled in metres*)
WATER SURFACE ELEVATION (*Labelled in metres*)
- INUNDATION EXTENT
- ← FLOW DIRECTION

DRAFT

DATA SOURCES: REFER TO NOTES ON INDEX MAP

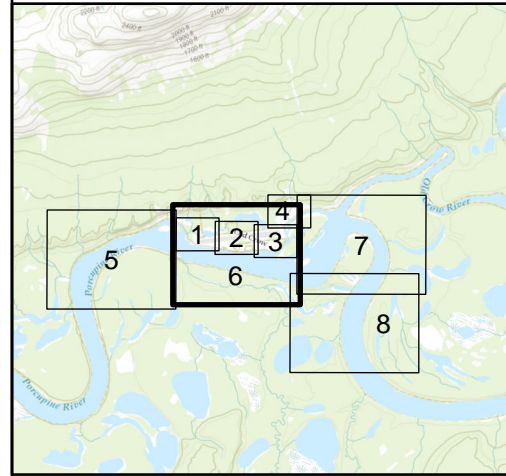
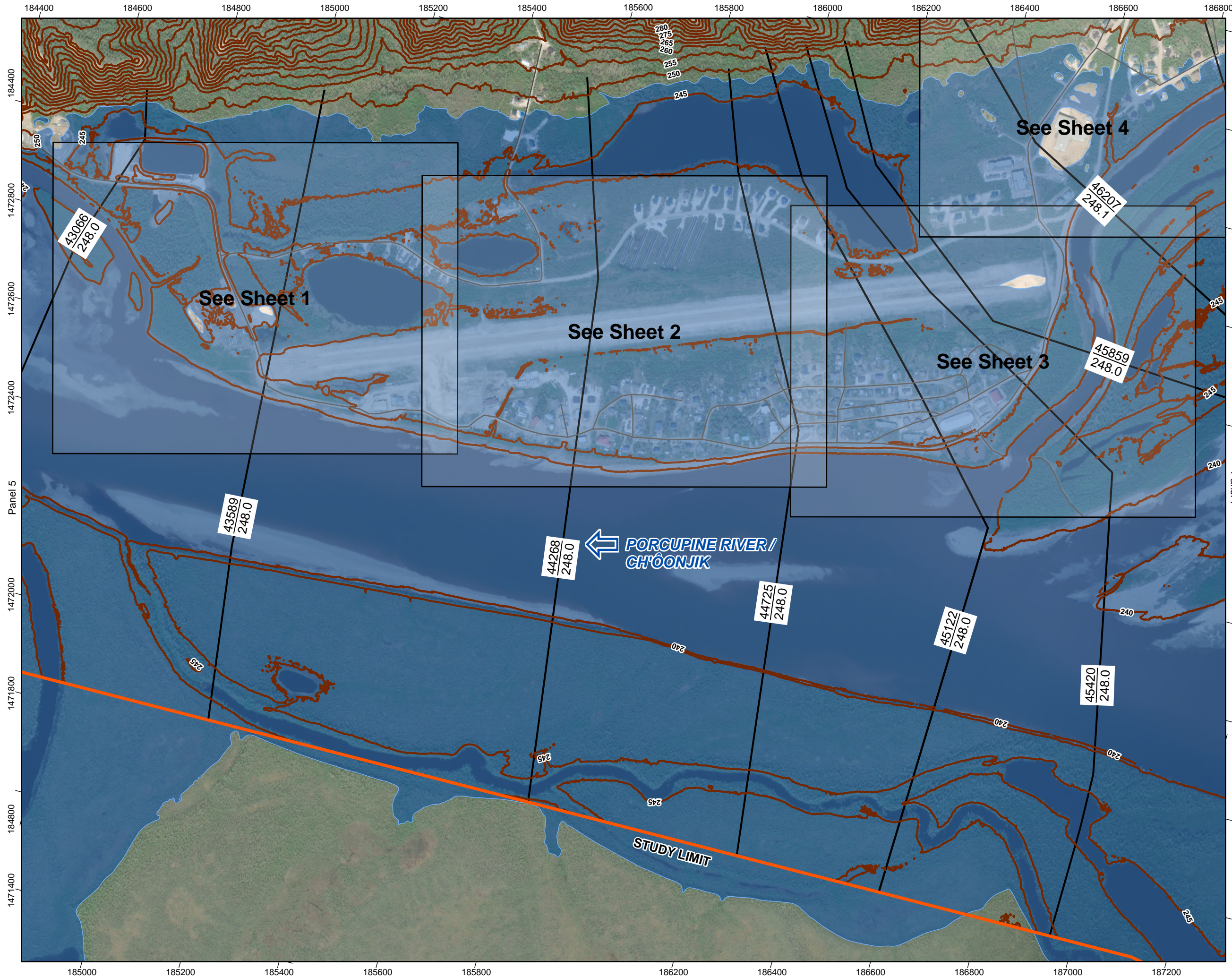


Coordinate System: NAD 1983 CSRS YUKON ALBERS
Units: METRES; Vertical Datum: CGVD2013 (CGG2013a)

Job: 1008777 Date: 28-JAN-2025

**OLD CROW FLOOD MAPPING
INUNDATION EXTENT
0.5% ICE JAM ANNUAL
EXCEEDANCE PROBABILITY**

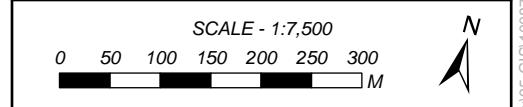
JXD, \\mainfile-van\Projects\Active\1008777\Old_Crow\95_GIS\1008777_JXD_FloodMapping_795K_R1.aprx



- ROAD
- STUDY LIMIT
- MAJOR CONTOUR AT 5M INTERVAL
Labelled with elevation in metres
- MODELLED CROSS-SECTION
- 40757 / 246.43 STATIONING (*Labelled in metres*)
WATER SURFACE ELEVATION (*Labelled in metres*)
- INUNDATION EXTENT
- ← FLOW DIRECTION

DRAFT

DATA SOURCES: REFER TO NOTES ON INDEX MAP

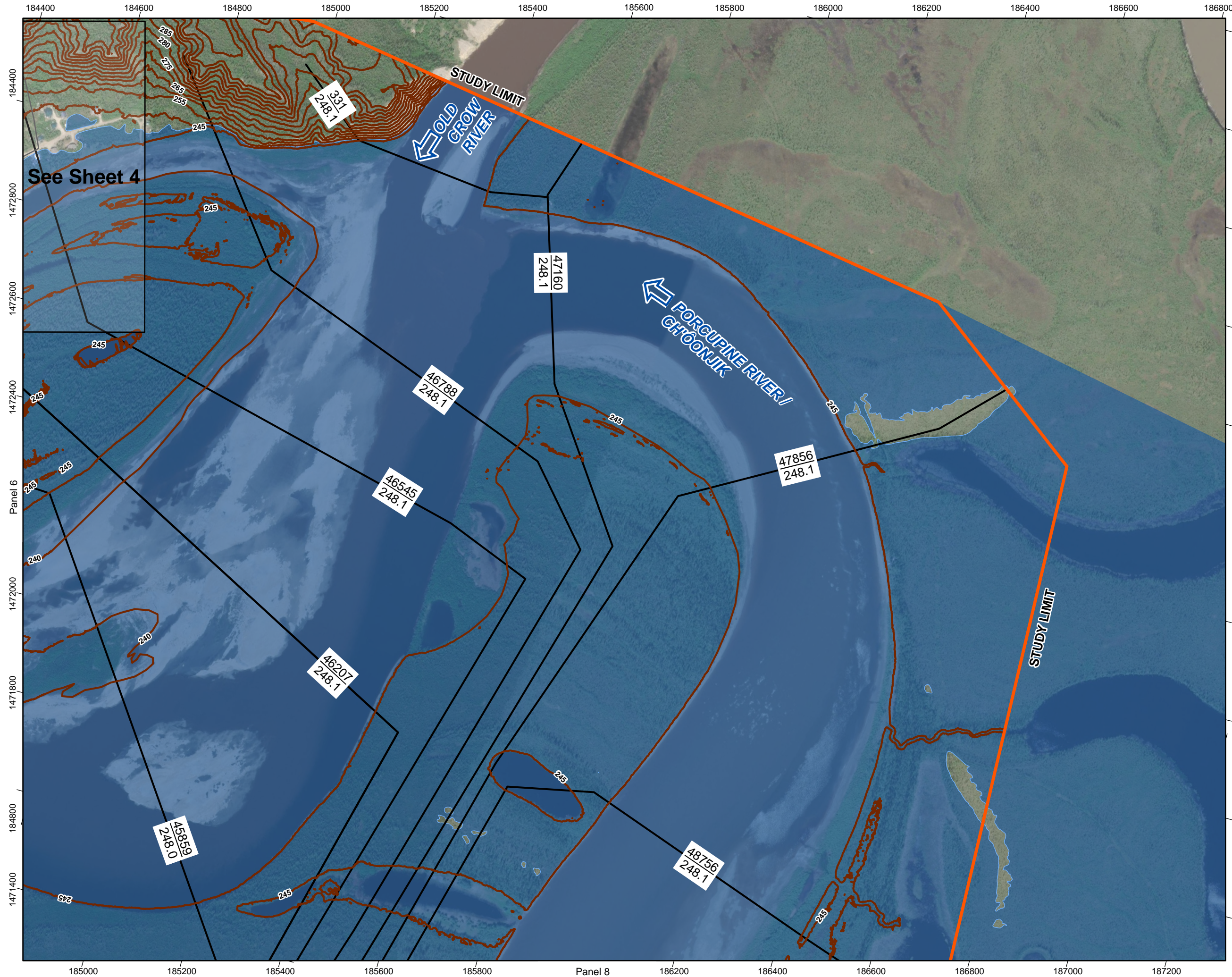


Coordinate System: NAD 1983 CSRS YUKON ALBERS
Units: METRES; Vertical Datum: CGVD2013 (CGG2013a)

Job: 1008777 Date: 28-JAN-2025

**OLD CROW FLOOD MAPPING
INUNDATION EXTENT
0.5% ICE JAM ANNUAL
EXCEEDANCE PROBABILITY**

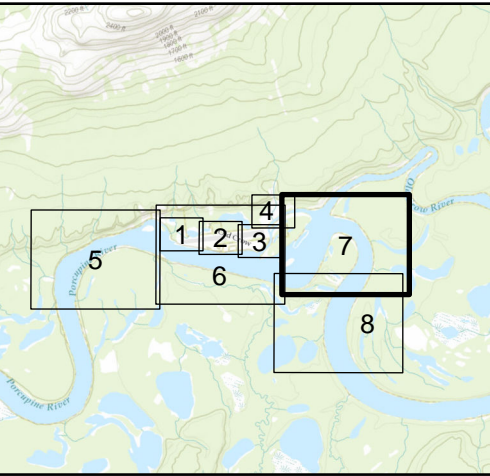
JXD, \\mainfile-van\Projects\Active\1008777_Old_Crow\95_GIS\1008777_JXD_FloodMapping_795K_R1.aprx



See Sheet 4

Panel 6

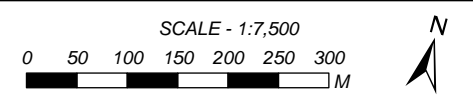
Panel 8



- ROAD
- STUDY LIMIT
- MAJOR CONTOUR AT 5M INTERVAL
Labelled with elevation in metres
- MODELLED CROSS-SECTION
- 40757
246.43 STATIONING (*Labelled in metres*)
WATER SURFACE ELEVATION (*Labelled in metres*)
- INUNDATION EXTENT
- ← FLOW DIRECTION

DRAFT

DATA SOURCES: REFER TO NOTES ON INDEX MAP



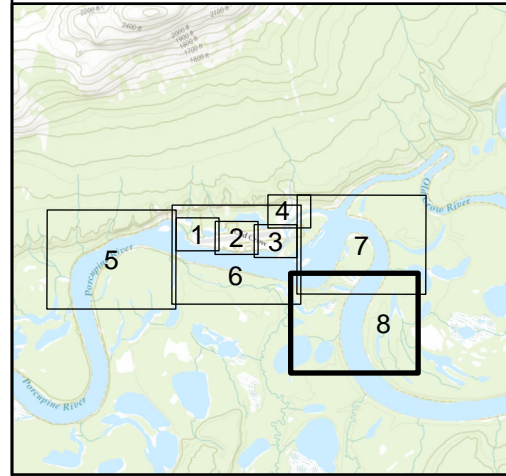
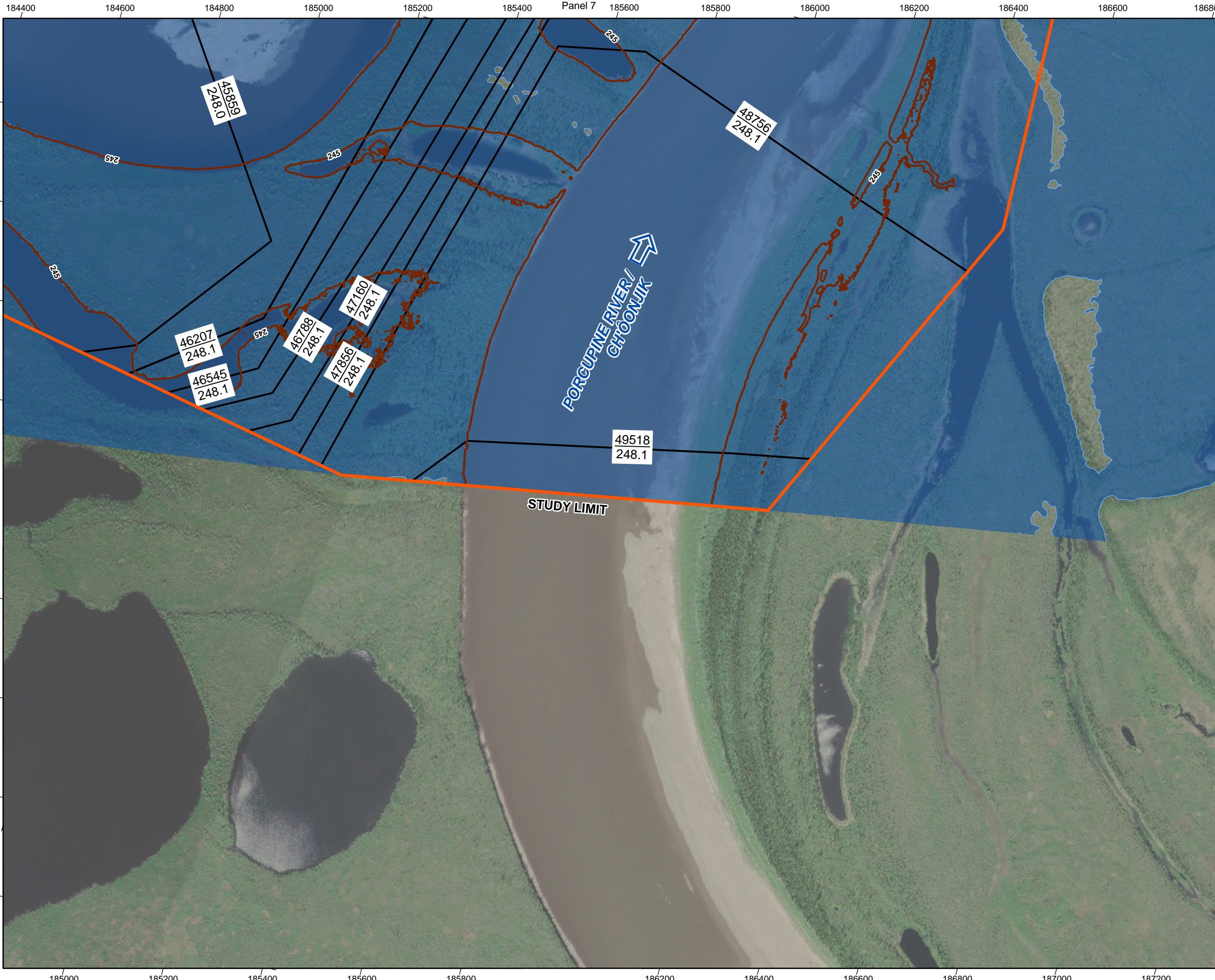
Coordinate System: NAD 1983 CSRS YUKON ALBERS
Units: METRES; Vertical Datum: CGVD2013 (CGG2013a)

Job: 1008777 Date: 28-JAN-2025

**OLD CROW FLOOD MAPPING
INUNDATION EXTENT
0.5% ICE JAM ANNUAL
EXCEEDANCE PROBABILITY**

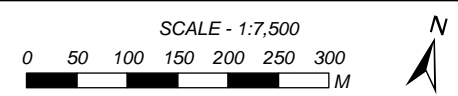
SHEET 7 of 8

JXD, \\mainfile-van\Projects\Active\1008777\Old_Crow\95_GIS\1008777_JXD_FloodMapping_795k_R1.aprx



- ROAD
- STUDY LIMIT
- MAJOR CONTOUR AT 5M INTERVAL
Labelled with elevation in metres
- MODELLED CROSS-SECTION
- $\frac{40757}{246.43}$ STATIONING (*Labelled in metres*)
WATER SURFACE ELEVATION (*Labelled in metres*)
- INUNDATION EXTENT
- ← FLOW DIRECTION

DATA SOURCES: REFER TO NOTES ON INDEX MAP



Coordinate System: NAD 1983 CSRS YUKON ALBERS
Units: METRES; Vertical Datum: CGVD2013 (CGG2013a)

Job: 1008777 Date: 28-JAN-2025

OLD CROW FLOOD MAPPING
INUNDATION EXTENT
0.5% ICE JAM ANNUAL
EXCEEDANCE PROBABILITY

JXD, \\mainfile-van\Projects\Active\1008777_Old_Crow\95_GIS\1008777_JXD_FloodMapping_795K_R1.aprx