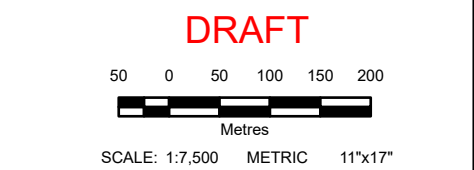


**LEGEND:**

21713.4	River Stationing
490.32	Water Surface Elevation (m)
	Major Road
	5 m Index Contour
	Limit of LiDAR
	Average Annual Peak (50% AEP)
	1% AEP Inundation - Open Water
	First Nation Settlement Lands - Surveyed

- NOTES:**
1. AEP corresponds to the Annual Exceedance Probability.
  2. This project is funded in part by the Government of Canada.
  3. Ground surface representation is provided at a 1 m spatial resolution and is derived from LiDAR, dated September 2021, June 2022, and June 2025. Features smaller than this resolution may not be well-represented.
  4. Culvert and Bridge data is a combination of data provided by the Yukon Government and crossings surveyed by KGS Group.
  5. Imagery provided by the Yukon Government, captured in 2021 and 2022. Additional imagery provided by ESRI, captured in June 2021.



All units are metric and in metres unless otherwise specified.  
Transverse Mercator Projection, NAD83 Yukon Albers CSRS.  
Elevations are in metres above sea level (MSL).  
Canadian Geodetic Vertical Datum 2013 (CGVD2013).

B	26/05/12	ISSUED FOR REVIEW	ALW	MAH
A	26/03/20	ISSUED FOR REVIEW	ALW	MAH
NO.	YYMMDD	DESCRIPTION	ISSUED BY	CHECK BY

REVISIONS / ISSUE

MAYO FLOOD MAPPING STUDY	
STEWART RIVER / NA-CHO NYÄK OPEN WATER 1% ANNUAL EXCEEDANCE PROBABILITY	
MAY 2026	SHEET 17 OF 20
	REV: B