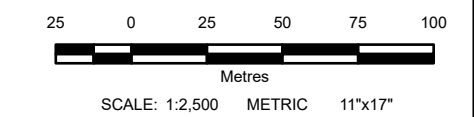


LEGEND:

| | |
|--------------------------------|---|
| <u>2713.4</u> <u>490.32</u> | River Stationing Water Surface Elevation (m) |
| | Local Road |
| | 5 m Index Contour |
| | 1 m Contour |
| | Average Annual Peak (50% AEP) |
| | 5% AEP Inundation - Open Water |
| | First Nation Settlement Lands - Surveyed |

- NOTES:**
1. AEP corresponds to the Annual Exceedance Probability.
 2. This project is funded in part by the Government of Canada.
 3. Ground surface representation is provided at a 1 m spatial resolution and is derived from LiDAR, dated September 2021, June 2022, and June 2025. Features smaller than this resolution may not be well-represented.
 4. Culvert and Bridge data is a combination of data provided by the Yukon Government and crossings surveyed by KGS Group.
 5. Imagery provided by the Yukon Government, captured in 2021 and 2022. Additional imagery provided by ESRI, captured in June 2021.
 6. Stewart River flood flows generate higher water levels than Mayo River flood flows within the Mayo town site and along the Mayo River below station 1992.

DRAFT

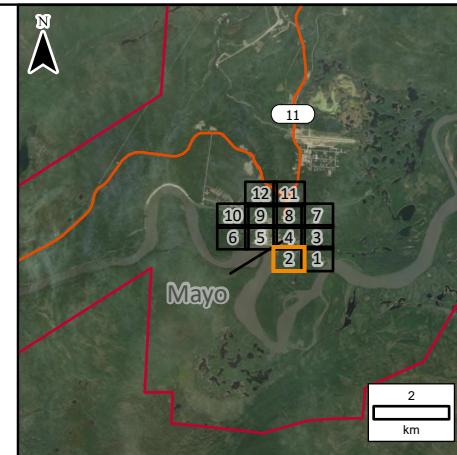
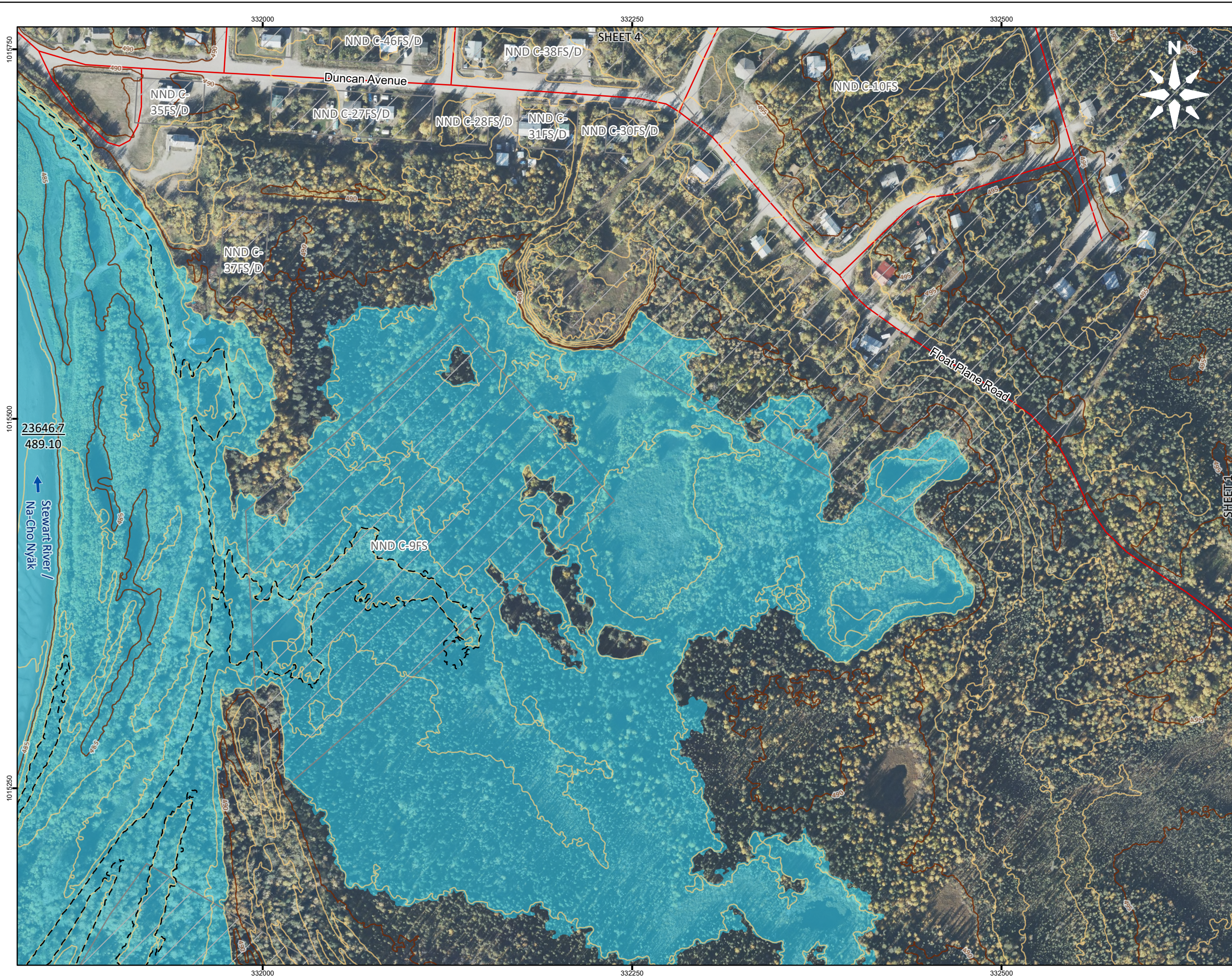


All units are metric and in metres unless otherwise specified.
Transverse Mercator Projection, NAD83 Yukon Albers CSRS.
Elevations are in metres above sea level (MSL).
Canadian Geodetic Vertical Datum 2013 (CGVD2013).

| | | | | |
|-----|----------|-------------------|-----------|----------|
| B | 26/05/12 | ISSUED FOR REVIEW | ALW | MAH |
| A | 26/03/20 | ISSUED FOR REVIEW | ALW | MAH |
| NO. | YYMMDD | DESCRIPTION | ISSUED BY | CHECK BY |

REVISIONS / ISSUE

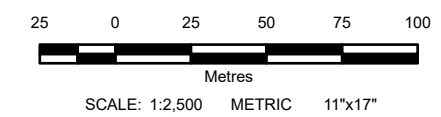
| | |
|---|---------------|
| | |
| MAYO FLOOD MAPPING STUDY | |
| VILLAGE OF MAYO OPEN WATER 5% ANNUAL EXCEEDANCE PROBABILITY | |
| MAY 2026 | SHEET 1 OF 12 |
| | REV: B |



- LEGEND:**
- 2713.4 River Stationing
 - 490.32 Water Surface Elevation (m)
 - Local Road
 - 5 m Index Contour
 - 1 m Contour
 - - - Average Annual Peak (50% AEP)
 - 5% AEP Inundation - Open Water
 - First Nation Settlement Lands - Surveyed

- NOTES:**
1. AEP corresponds to the Annual Exceedance Probability.
 2. This project is funded in part by the Government of Canada.
 3. Ground surface representation is provided at a 1 m spatial resolution and is derived from LiDAR, dated September 2021, June 2022, and June 2025. Features smaller than this resolution may not be well-represented.
 4. Culvert and Bridge data is a combination of data provided by the Yukon Government and crossings surveyed by KGS Group.
 5. Imagery provided by the Yukon Government, captured in 2021 and 2022. Additional imagery provided by ESRI, captured in June 2021.
 6. Stewart River flood flows generate higher water levels than Mayo River flood flows within the Mayo town site and along the Mayo River below station 1992.

DRAFT



All units are metric and in metres unless otherwise specified.
Transverse Mercator Projection, NAD83 Yukon Albers CSRS.
Elevations are in metres above sea level (MSL).
Canadian Geodetic Vertical Datum 2013 (CGVD2013).

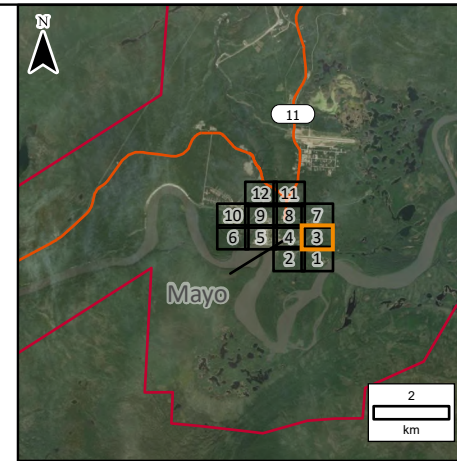
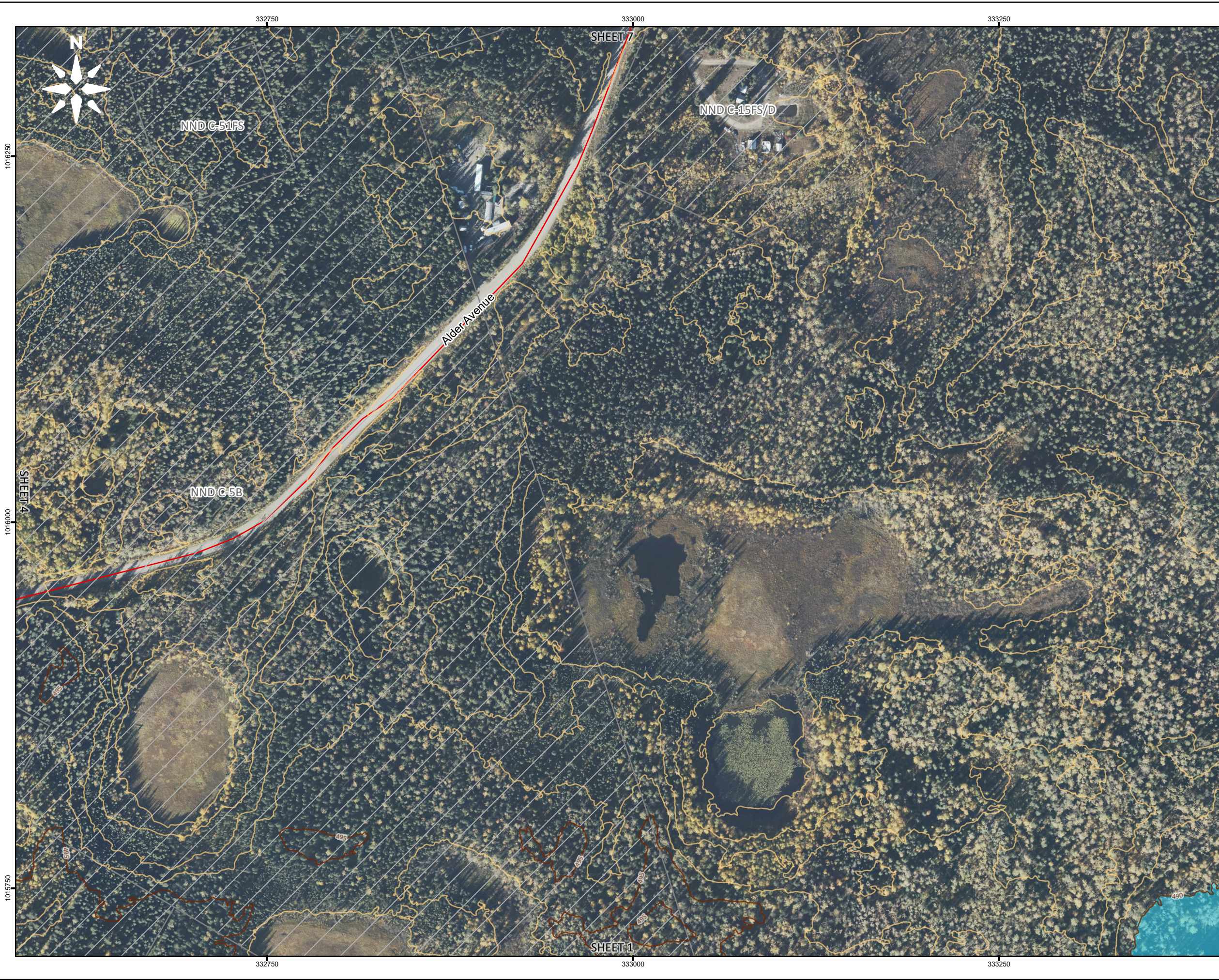
| NO. | YYMMDD | DESCRIPTION | ISSUED BY | CHECK BY |
|-----|----------|-------------------|-----------|----------|
| B | 26/05/12 | ISSUED FOR REVIEW | ALW | MAH |
| A | 26/03/20 | ISSUED FOR REVIEW | ALW | MAH |

REVISIONS / ISSUE

MAYO FLOOD MAPPING STUDY

VILLAGE OF MAYO
OPEN WATER 5%
ANNUAL EXCEEDANCE PROBABILITY

| | | |
|----------|---------------|--------|
| MAY 2026 | SHEET 2 OF 12 | REV: B |
|----------|---------------|--------|



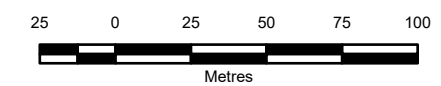
LEGEND:

- Local Road
- 5 m Index Contour
- 1 m Contour
- 5% AEP Inundation - Open Water
- First Nation Settlement Lands - Surveyed

NOTES:

1. AEP corresponds to the Annual Exceedance Probability.
2. This project is funded in part by the Government of Canada.
3. Ground surface representation is provided at a 1 m spatial resolution and is derived from LiDAR, dated September 2021, June 2022, and June 2025. Features smaller than this resolution may not be well-represented.
4. Culvert and Bridge data is a combination of data provided by the Yukon Government and crossings surveyed by KGS Group.
5. Imagery provided by the Yukon Government, captured in 2021 and 2022. Additional imagery provided by ESRI, captured in June 2021.
6. Stewart River flood flows generate higher water levels than Mayo River flood flows within the Mayo town site and along the Mayo River below station 1992.

DRAFT





SCALE: 1:2,500 METRIC 11"x17"

All units are metric and in metres unless otherwise specified.
Transverse Mercator Projection, NAD83 Yukon Albers CSRS.
Elevations are in metres above sea level (MSL).
Canadian Geodetic Vertical Datum 2013 (CGVD2013).

| | | | | |
|-----|----------|-------------------|-----------|----------|
| B | 26/05/12 | ISSUED FOR REVIEW | ALW | MAH |
| A | 26/03/20 | ISSUED FOR REVIEW | ALW | MAH |
| NO. | YYMMDD | DESCRIPTION | ISSUED BY | CHECK BY |

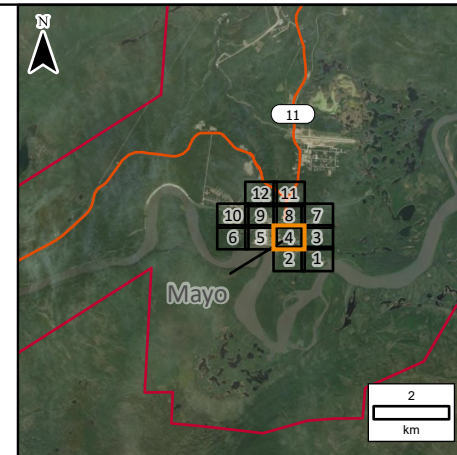
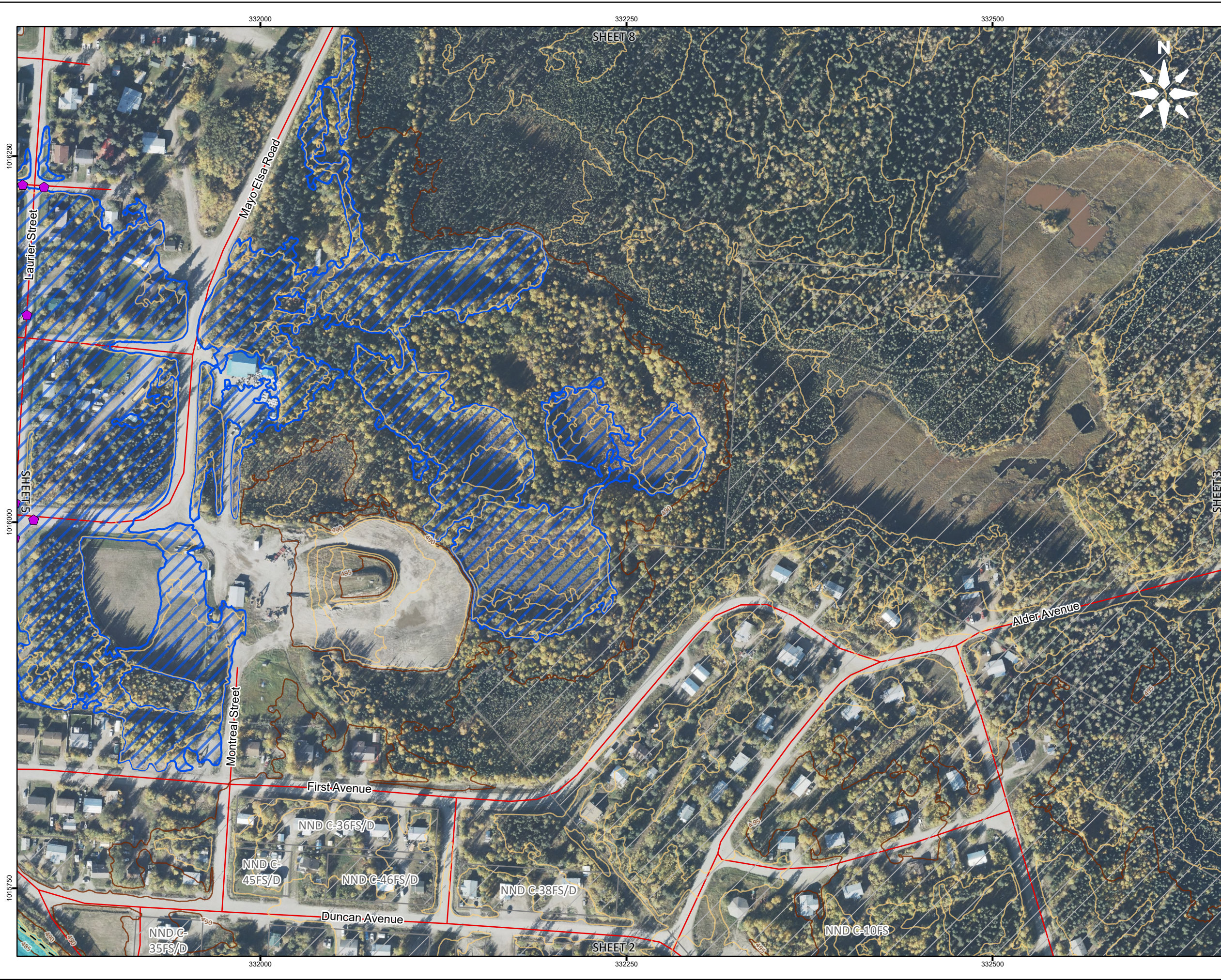
REVISIONS / ISSUE

MAYO FLOOD MAPPING STUDY

**VILLAGE OF MAYO
OPEN WATER 5%
ANNUAL EXCEEDANCE PROBABILITY**

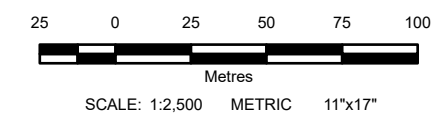
| | | |
|----------|---------------|--------|
| MAY 2026 | SHEET 3 OF 12 | REV: B |
|----------|---------------|--------|



- LEGEND:**
- Culvert
 - Local Road
 - 5 m Index Contour
 - 1 m Contour
 - Average Annual Peak (50% AEP)
 - Area Protected by Dike
 - 5% AEP Inundation - Open Water
 - First Nation Settlement Lands - Surveyed

- NOTES:**
1. AEP corresponds to the Annual Exceedance Probability.
 2. This project is funded in part by the Government of Canada.
 3. Ground surface representation is provided at a 1 m spatial resolution and is derived from LiDAR, dated September 2021, June 2022, and June 2025. Features smaller than this resolution may not be well-represented.
 4. Culvert and Bridge data is a combination of data provided by the Yukon Government and crossings surveyed by KGS Group.
 5. Imagery provided by the Yukon Government, captured in 2021 and 2022. Additional imagery provided by ESRI, captured in June 2021.
 6. Stewart River flood flows generate higher water levels than Mayo River flood flows within the Mayo town site and along the Mayo River below station 1992.

DRAFT



All units are metric and in metres unless otherwise specified.
Transverse Mercator Projection, NAD83 Yukon Albers CSRS.
Elevations are in metres above sea level (MSL).
Canadian Geodetic Vertical Datum 2013 (CGVD2013).

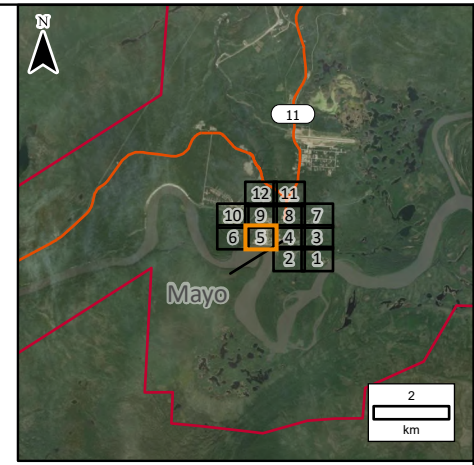
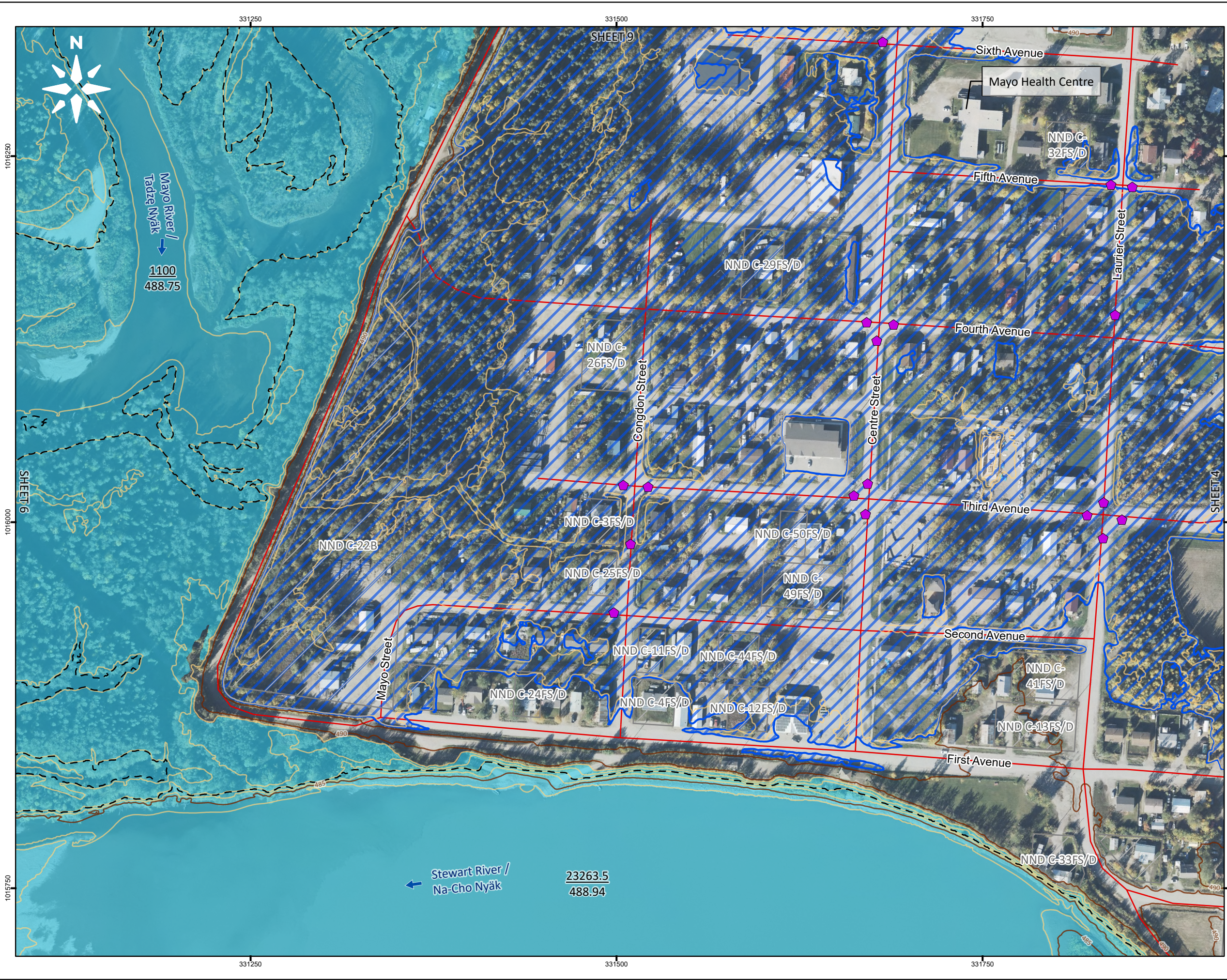
| | | | | |
|-----|----------|-------------------|-----------|----------|
| B | 26/05/12 | ISSUED FOR REVIEW | ALW | MAH |
| A | 26/03/20 | ISSUED FOR REVIEW | ALW | MAH |
| NO. | YYMMDD | DESCRIPTION | ISSUED BY | CHECK BY |

REVISIONS / ISSUE

MAYO FLOOD MAPPING STUDY

**VILLAGE OF MAYO
OPEN WATER 5%
ANNUAL EXCEEDANCE PROBABILITY**

| | | |
|----------|---------------|--------|
| MAY 2026 | SHEET 4 OF 12 | REV: B |
|----------|---------------|--------|

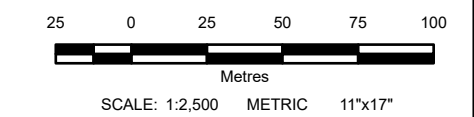


LEGEND:

| | |
|--------|--|
| 2713.4 | River Stationing |
| 490.32 | Water Surface Elevation (m) |
| | Culvert |
| | Local Road |
| | 5 m Index Contour |
| | 1 m Contour |
| | Average Annual Peak (50% AEP) |
| | Area Protected by Dike |
| | 5% AEP Inundation - Open Water |
| | First Nation Settlement Lands - Surveyed |

- NOTES:**
1. AEP corresponds to the Annual Exceedance Probability.
 2. This project is funded in part by the Government of Canada.
 3. Ground surface representation is provided at a 1 m spatial resolution and is derived from LiDAR, dated September 2021, June 2022, and June 2025. Features smaller than this resolution may not be well-represented.
 4. Culvert and Bridge data is a combination of data provided by the Yukon Government and crossings surveyed by KGS Group.
 5. Imagery provided by the Yukon Government, captured in 2021 and 2022. Additional imagery provided by ESRI, captured in June 2021.
 6. Stewart River flood flows generate higher water levels than Mayo River flood flows within the Mayo town site and along the Mayo River below station 1992.

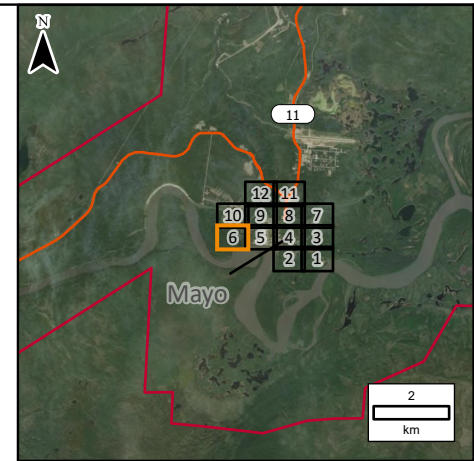
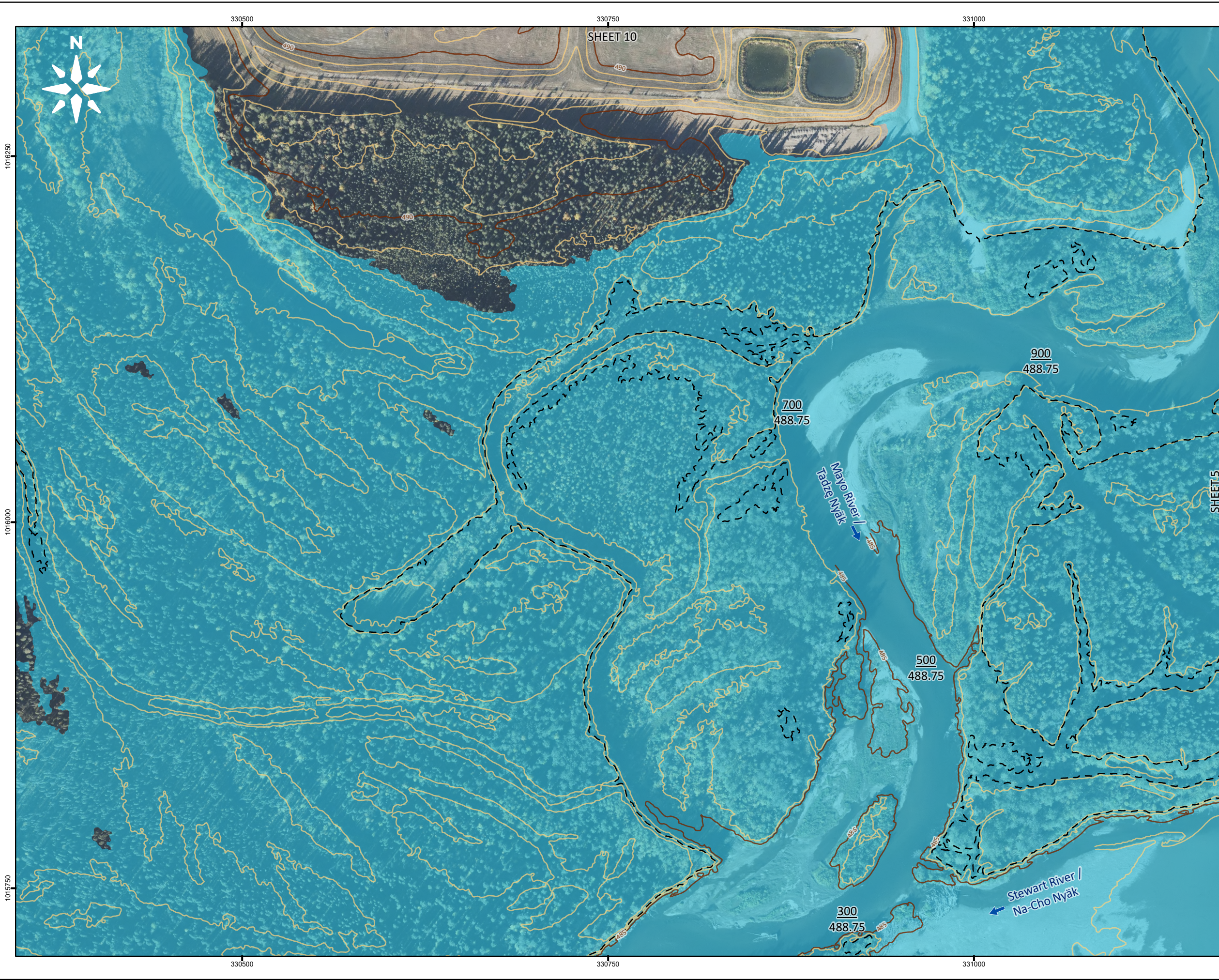
DRAFT



All units are metric and in metres unless otherwise specified. Transverse Mercator Projection, NAD83 Yukon Albers CSRS. Elevations are in metres above sea level (MSL). Canadian Geodetic Vertical Datum 2013 (CGVD2013).

| | | | | |
|-------------------|----------|-------------------|-----------|----------|
| B | 26/05/12 | ISSUED FOR REVIEW | ALW | MAH |
| A | 26/03/20 | ISSUED FOR REVIEW | ALW | MAH |
| NO. | YYMMDD | DESCRIPTION | ISSUED BY | CHECK BY |
| REVISIONS / ISSUE | | | | |

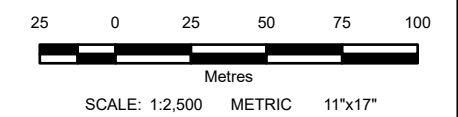
| | |
|---|---------------|
| | |
| MAYO FLOOD MAPPING STUDY | |
| VILLAGE OF MAYO OPEN WATER 5% ANNUAL EXCEEDANCE PROBABILITY | |
| MAY 2026 | SHEET 5 OF 12 |
| | REV: B |



- LEGEND:**
- 2713.4 River Stationing
 - 490.32 Water Surface Elevation (m)
 - 5 m Index Contour
 - 1 m Contour
 - - - Average Annual Peak (50% AEP)
 - 5% AEP Inundation - Open Water

- NOTES:**
1. AEP corresponds to the Annual Exceedance Probability.
 2. This project is funded in part by the Government of Canada.
 3. Ground surface representation is provided at a 1 m spatial resolution and is derived from LiDAR, dated September 2021, June 2022, and June 2025. Features smaller than this resolution may not be well-represented.
 4. Culvert and Bridge data is a combination of data provided by the Yukon Government and crossings surveyed by KGS Group.
 5. Imagery provided by the Yukon Government, captured in 2021 and 2022. Additional imagery provided by ESRI, captured in June 2021.
 6. Stewart River flood flows generate higher water levels than Mayo River flood flows within the Mayo town site and along the Mayo River below station 1992.

DRAFT



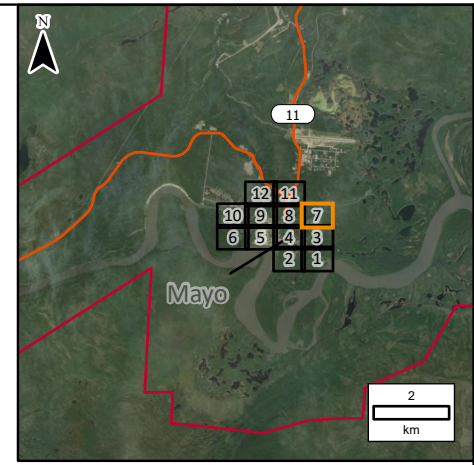
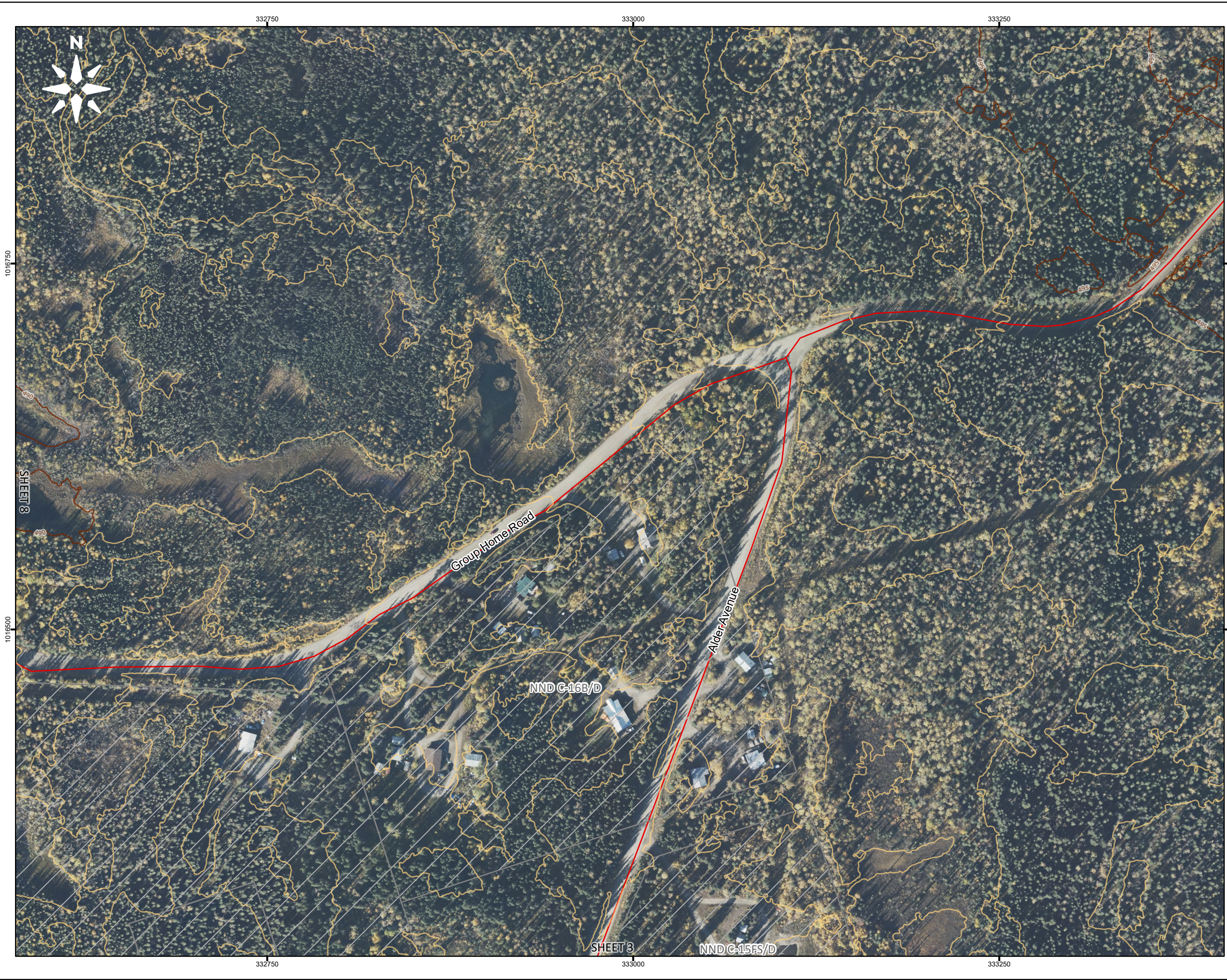
All units are metric and in metres unless otherwise specified.
Transverse Mercator Projection, NAD83 Yukon Albers CSRS.
Elevations are in metres above sea level (MSL).
Canadian Geodetic Vertical Datum 2013 (CGVD2013).

| | | | | |
|-------------------|----------|-------------------|-----------|----------|
| B | 26/05/12 | ISSUED FOR REVIEW | ALW | MAH |
| A | 26/03/20 | ISSUED FOR REVIEW | ALW | MAH |
| NO. | YYMMDD | DESCRIPTION | ISSUED BY | CHECK BY |
| REVISIONS / ISSUE | | | | |

MAYO FLOOD MAPPING STUDY

**VILLAGE OF MAYO
OPEN WATER 5%
ANNUAL EXCEEDANCE PROBABILITY**

| | | |
|----------|---------------|--------|
| MAY 2026 | SHEET 6 OF 12 | REV: B |
|----------|---------------|--------|

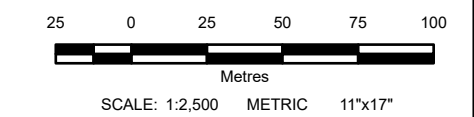


LEGEND:

- Local Road
- 5 m Index Contour
- 1 m Contour
- First Nation Settlement Lands - Surveyed

- NOTES:**
1. AEP corresponds to the Annual Exceedance Probability.
 2. This project is funded in part by the Government of Canada.
 3. Ground surface representation is provided at a 1 m spatial resolution and is derived from LiDAR, dated September 2021, June 2022, and June 2025. Features smaller than this resolution may not be well-represented.
 4. Culvert and Bridge data is a combination of data provided by the Yukon Government and crossings surveyed by KGS Group.
 5. Imagery provided by the Yukon Government, captured in 2021 and 2022. Additional imagery provided by ESRI, captured in June 2021.
 6. Stewart River flood flows generate higher water levels than Mayo River flood flows within the Mayo town site and along the Mayo River below station 1992.

DRAFT



All units are metric and in metres unless otherwise specified.
 Transverse Mercator Projection, NAD83 Yukon Albers CSRS.
 Elevations are in metres above sea level (MSL).
 Canadian Geodetic Vertical Datum 2013 (CGVD2013).

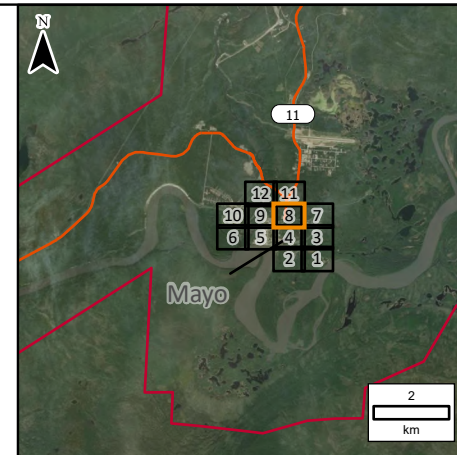
| NO. | YYMMDD | DESCRIPTION | ISSUED BY | CHECK BY |
|-----|----------|-------------------|-----------|----------|
| B | 26/05/12 | ISSUED FOR REVIEW | ALW | MAH |
| A | 26/03/20 | ISSUED FOR REVIEW | ALW | MAH |

REVISIONS / ISSUE

MAYO FLOOD MAPPING STUDY

VILLAGE OF MAYO
 OPEN WATER 5%
 ANNUAL EXCEEDANCE PROBABILITY

| | | |
|----------|---------------|--------|
| MAY 2026 | SHEET 7 OF 12 | REV: B |
|----------|---------------|--------|



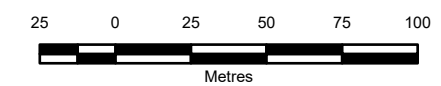
LEGEND:

- Culvert
- Major Road
- Local Road
- 5 m Index Contour
- 1 m Contour
- Average Annual Peak (50% AEP)
- Area Protected by Dike
- 5% AEP Inundation - Open Water
- First Nation Settlement Lands - Surveyed

NOTES:

1. AEP corresponds to the Annual Exceedance Probability.
2. This project is funded in part by the Government of Canada.
3. Ground surface representation is provided at a 1 m spatial resolution and is derived from LiDAR, dated September 2021, June 2022, and June 2025. Features smaller than this resolution may not be well-represented.
4. Culvert and Bridge data is a combination of data provided by the Yukon Government and crossings surveyed by KGS Group.
5. Imagery provided by the Yukon Government, captured in 2021 and 2022. Additional imagery provided by ESRI, captured in June 2021.
6. Stewart River flood flows generate higher water levels than Mayo River flood flows within the Mayo town site and along the Mayo River below station 1992.

DRAFT





SCALE: 1:2,500 METRIC 11"x17"

All units are metric and in metres unless otherwise specified.
 Transverse Mercator Projection, NAD83 Yukon Albers CSRS.
 Elevations are in metres above sea level (MSL).
 Canadian Geodetic Vertical Datum 2013 (CGVD2013).

| NO. | YYMMDD | DESCRIPTION | ISSUED BY | CHECK BY |
|-----|----------|-------------------|-----------|----------|
| B | 26/05/22 | ISSUED FOR REVIEW | ALW | MAH |
| A | 26/03/20 | ISSUED FOR REVIEW | ALW | MAH |

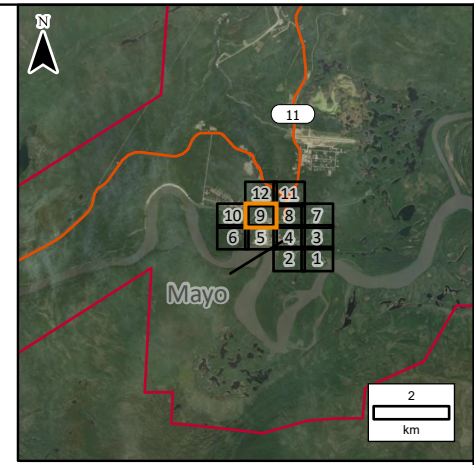
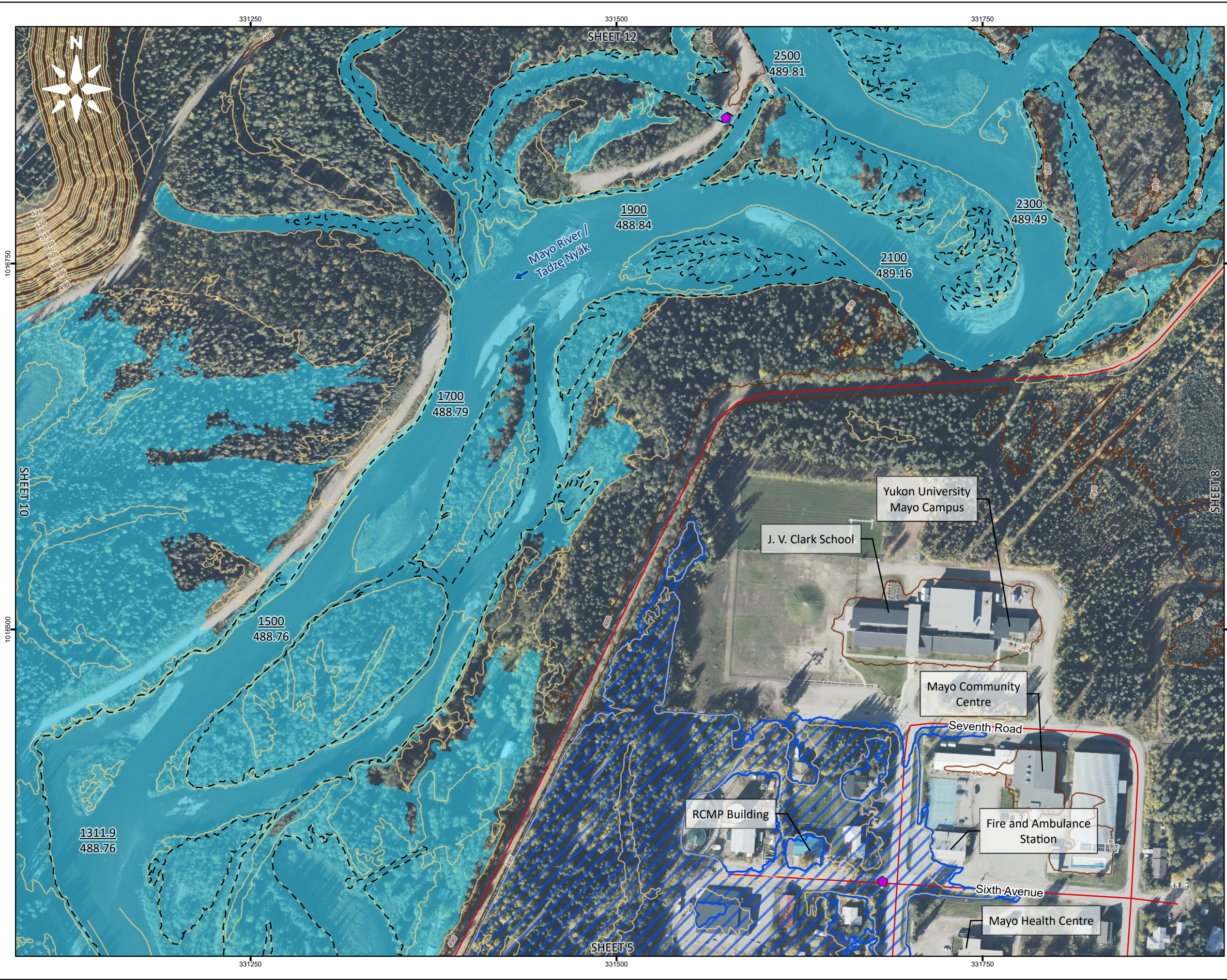
REVISIONS / ISSUE

MAYO FLOOD MAPPING STUDY

**VILLAGE OF MAYO
 OPEN WATER 5%
 ANNUAL EXCEEDANCE PROBABILITY**

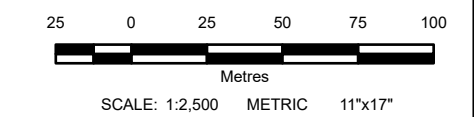
| | | |
|----------|---------------|--------|
| MAY 2026 | SHEET 8 OF 12 | REV: B |
|----------|---------------|--------|



- LEGEND:**
- 2713.4 River Stationing
 - 490.32 Water Surface Elevation (m)
 - Culvert
 - Local Road
 - 5 m Index Contour
 - 1 m Contour
 - - - Average Annual Peak (50% AEP)
 - ▨ Area Protected by Dike
 - 5% AEP Inundation - Open Water
 - ▭ First Nation Settlement Lands - Surveyed

- NOTES:**
1. AEP corresponds to the Annual Exceedance Probability.
 2. This project is funded in part by the Government of Canada.
 3. Ground surface representation is provided at a 1 m spatial resolution and is derived from LiDAR, dated September 2021, June 2022, and June 2025. Features smaller than this resolution may not be well-represented.
 4. Culvert and Bridge data is a combination of data provided by the Yukon Government and crossings surveyed by KGS Group.
 5. Imagery provided by the Yukon Government, captured in 2021 and 2022. Additional imagery provided by ESRI, captured in June 2021.
 6. Stewart River flood flows generate higher water levels than Mayo River flood flows within the Mayo town site and along the Mayo River below station 1992.



DRAFT



All units are metric and in metres unless otherwise specified.
 Transverse Mercator Projection, NAD83 Yukon Albers CSRS.
 Elevations are in metres above sea level (MSL).
 Canadian Geodetic Vertical Datum 2013 (CGVD2013).

| NO. | YYMMDD | DESCRIPTION | ISSUED BY | CHECK BY |
|-----|----------|-------------------|-----------|----------|
| B | 26/05/12 | ISSUED FOR REVIEW | ALW | MAH |
| A | 26/03/20 | ISSUED FOR REVIEW | ALW | MAH |

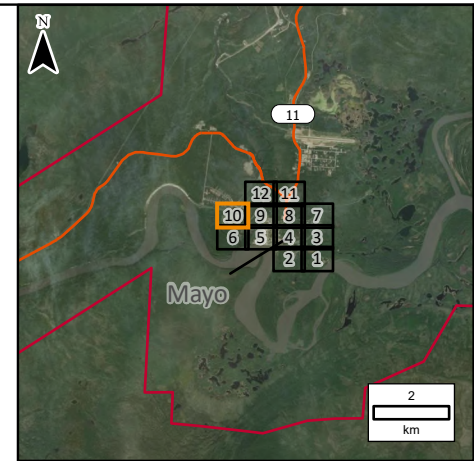
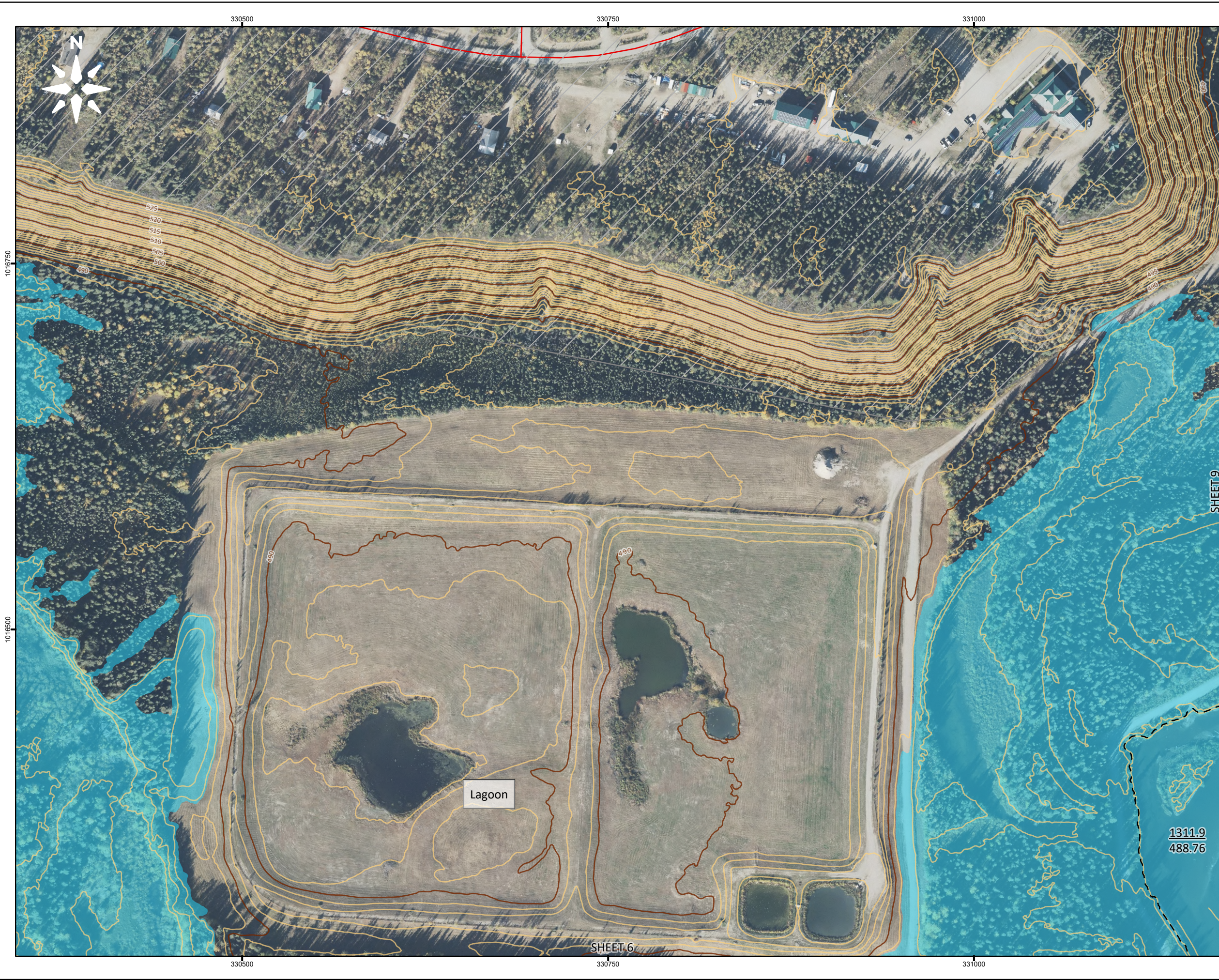
REVISIONS / ISSUE

MAYO FLOOD MAPPING STUDY

**VILLAGE OF MAYO
 OPEN WATER 5%
 ANNUAL EXCEEDANCE PROBABILITY**

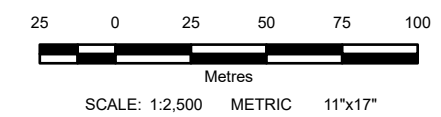
| | |
|----------|---------------|
| MAY 2026 | SHEET 9 OF 12 |
| | REV: B |



- LEGEND:**
- 2713.4 River Stationing
 - 490.32 Water Surface Elevation (m)
 - Local Road
 - 5 m Index Contour
 - 1 m Contour
 - - Average Annual Peak (50% AEP)
 - 5% AEP Inundation - Open Water
 - First Nation Settlement Lands - Surveyed

- NOTES:**
1. AEP corresponds to the Annual Exceedance Probability.
 2. This project is funded in part by the Government of Canada.
 3. Ground surface representation is provided at a 1 m spatial resolution and is derived from LiDAR, dated September 2021, June 2022, and June 2025. Features smaller than this resolution may not be well-represented.
 4. Culvert and Bridge data is a combination of data provided by the Yukon Government and crossings surveyed by KGS Group.
 5. Imagery provided by the Yukon Government, captured in 2021 and 2022. Additional imagery provided by ESRI, captured in June 2021.
 6. Stewart River flood flows generate higher water levels than Mayo River flood flows within the Mayo town site and along the Mayo River below station 1992.

DRAFT



All units are metric and in metres unless otherwise specified.
 Transverse Mercator Projection, NAD83 Yukon Albers CSRS.
 Elevations are in metres above sea level (MSL).
 Canadian Geodetic Vertical Datum 2013 (CGVD2013).

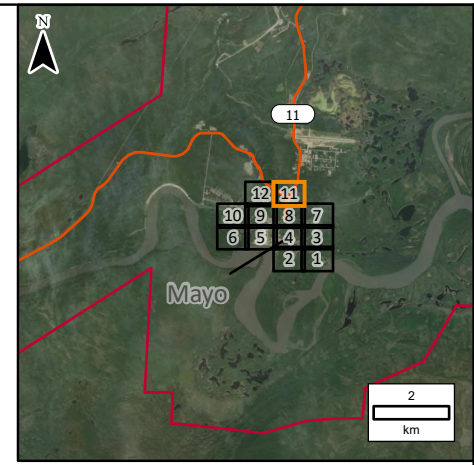
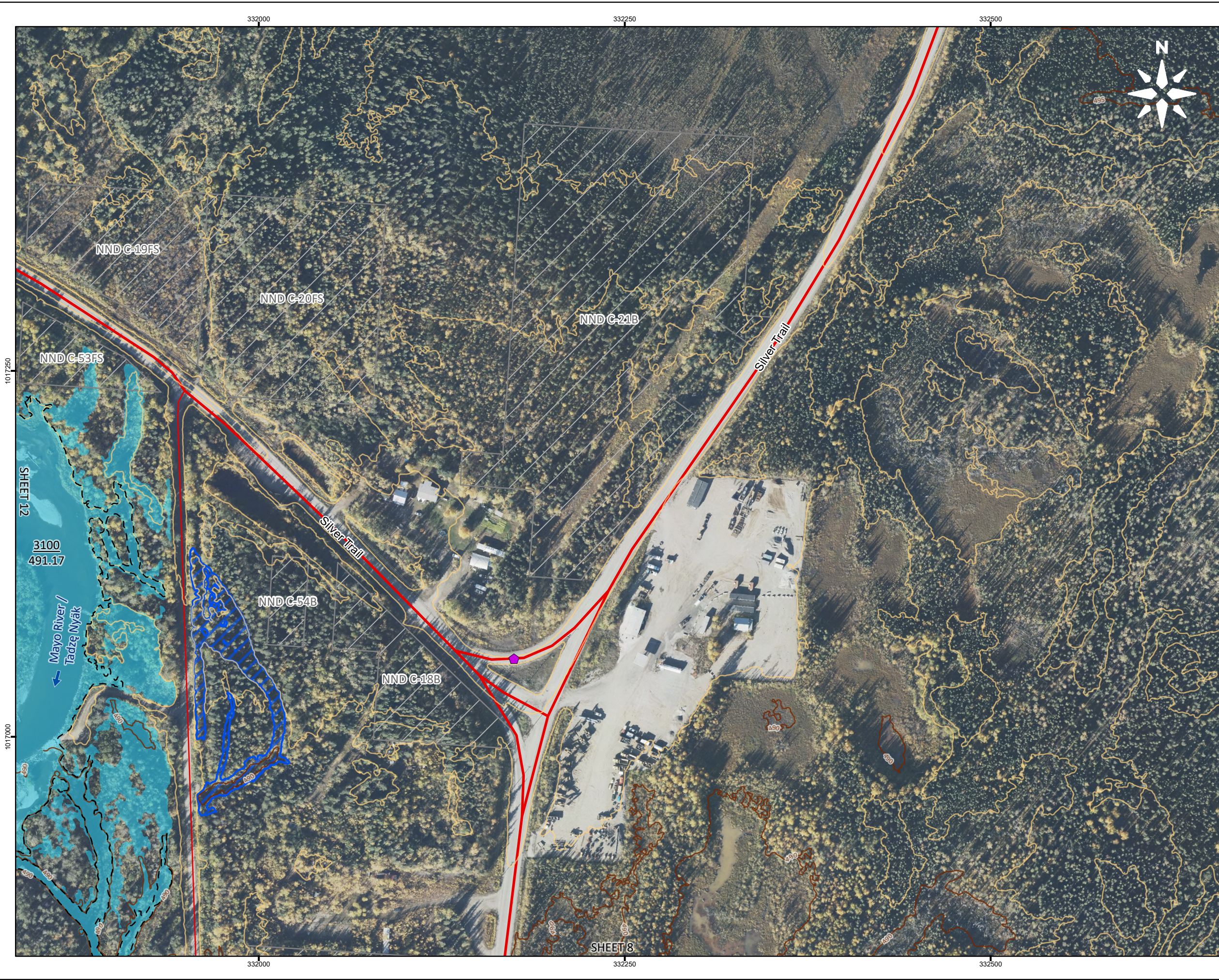
| | | | | |
|-----|----------|-------------------|-----------|----------|
| B | 26/05/12 | ISSUED FOR REVIEW | ALW | MAH |
| A | 26/03/20 | ISSUED FOR REVIEW | ALW | MAH |
| NO. | YYMMDD | DESCRIPTION | ISSUED BY | CHECK BY |

REVISIONS / ISSUE

MAYO FLOOD MAPPING STUDY

**VILLAGE OF MAYO
OPEN WATER 5%
ANNUAL EXCEEDANCE PROBABILITY**

| | |
|----------|----------------|
| MAY 2026 | SHEET 10 OF 12 |
| | REV: B |

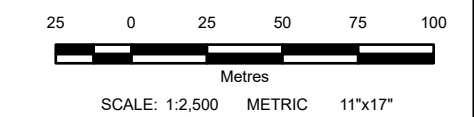


LEGEND:

| | |
|--|--|
| 2713.4 | River Stationing |
| 490.32 | Water Surface Elevation (m) |
| | Culvert |
| | Major Road |
| | Local Road |
| | 5 m Index Contour |
| | 1 m Contour |
| | Average Annual Peak (50% AEP) |
| | Area Protected by Dike |
| | 5% AEP Inundation - Open Water |
| | First Nation Settlement Lands - Surveyed |

- NOTES:**
1. AEP corresponds to the Annual Exceedance Probability.
 2. This project is funded in part by the Government of Canada.
 3. Ground surface representation is provided at a 1 m spatial resolution and is derived from LiDAR, dated September 2021, June 2022, and June 2025. Features smaller than this resolution may not be well-represented.
 4. Culvert and Bridge data is a combination of data provided by the Yukon Government and crossings surveyed by KGS Group.
 5. Imagery provided by the Yukon Government, captured in 2021 and 2022. Additional imagery provided by ESRI, captured in June 2021.
 6. Stewart River flood flows generate higher water levels than Mayo River flood flows within the Mayo town site and along the Mayo River below station 1992.

DRAFT



All units are metric and in metres unless otherwise specified. Transverse Mercator Projection, NAD83 Yukon Albers CSRS. Elevations are in metres above sea level (MSL). Canadian Geodetic Vertical Datum 2013 (CGVD2013).

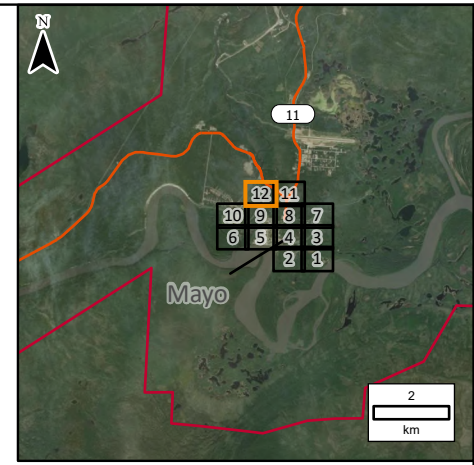
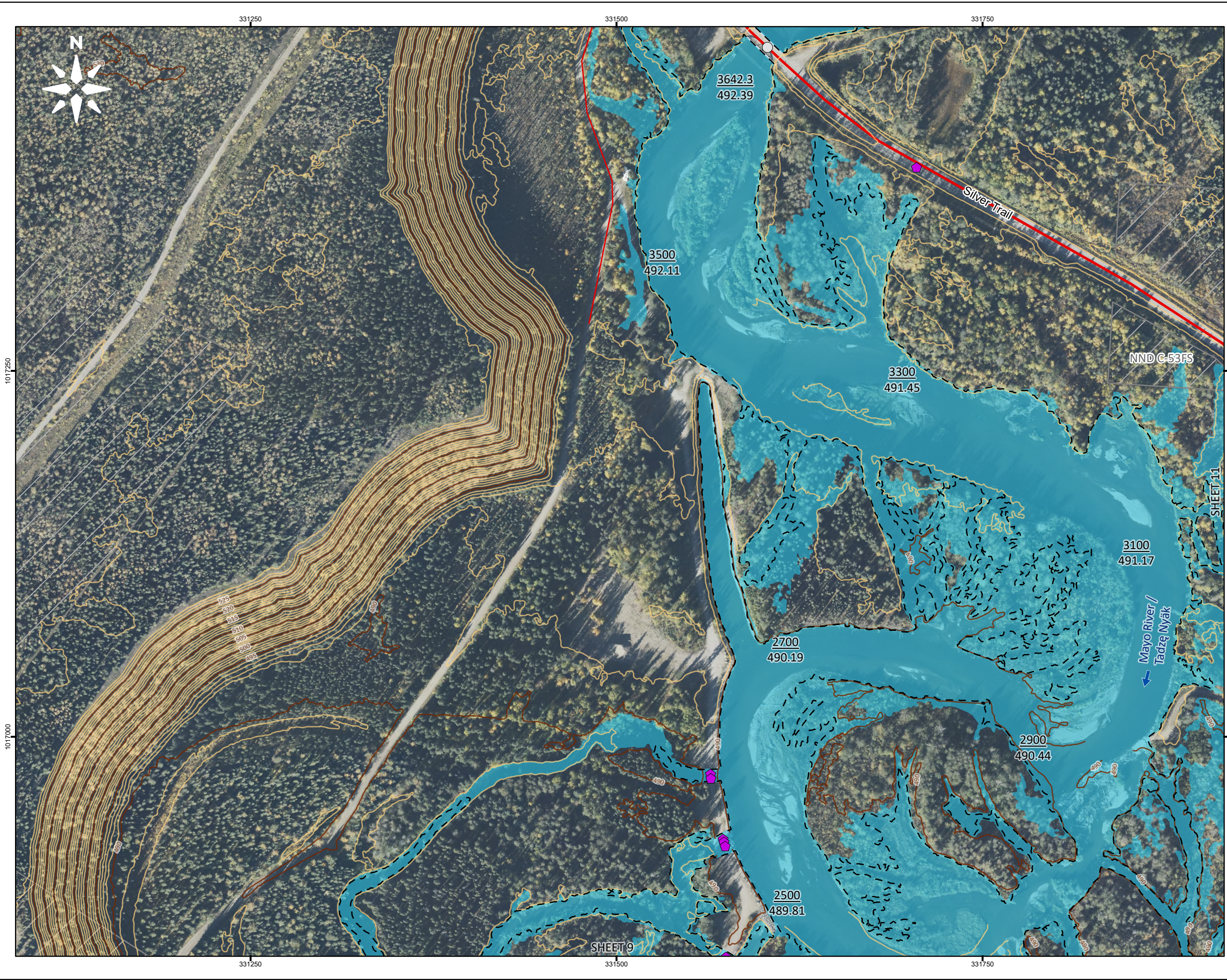
| | | | | |
|-----|----------|-------------------|-----------|----------|
| B | 26/05/12 | ISSUED FOR REVIEW | ALW | MAH |
| A | 26/03/20 | ISSUED FOR REVIEW | ALW | MAH |
| NO. | YYMMDD | DESCRIPTION | ISSUED BY | CHECK BY |

REVISIONS / ISSUE

MAYO FLOOD MAPPING STUDY

VILLAGE OF MAYO
OPEN WATER 5%
ANNUAL EXCEEDANCE PROBABILITY

| | | |
|----------|----------------|--------|
| MAY 2026 | SHEET 11 OF 12 | REV: B |
|----------|----------------|--------|

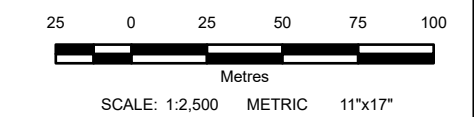


LEGEND:

| | |
|------------------|---|
| 2713.4 490.32 | River Stationing Water Surface Elevation (m) |
| ○ | Bridge |
| ◆ | Culvert |
| — (thick red) | Major Road |
| — (thin red) | Local Road |
| — (brown) | 5 m Index Contour |
| — (yellow) | 1 m Contour |
| - - - | Average Annual Peak (50% AEP) |
| ■ (light blue) | 5% AEP Inundation - Open Water |
| ▨ (hatched) | First Nation Settlement Lands - Surveyed |

- NOTES:**
1. AEP corresponds to the Annual Exceedance Probability.
 2. This project is funded in part by the Government of Canada.
 3. Ground surface representation is provided at a 1 m spatial resolution and is derived from LiDAR, dated September 2021, June 2022, and June 2025. Features smaller than this resolution may not be well-represented.
 4. Culvert and Bridge data is a combination of data provided by the Yukon Government and crossings surveyed by KGS Group.
 5. Imagery provided by the Yukon Government, captured in 2021 and 2022. Additional imagery provided by ESRI, captured in June 2021.
 6. Stewart River flood flows generate higher water levels than Mayo River flood flows within the Mayo town site and along the Mayo River below station 1992.

DRAFT



All units are metric and in metres unless otherwise specified.
Transverse Mercator Projection, NAD83 Yukon Albers CSRS.
Elevations are in metres above sea level (MSL).
Canadian Geodetic Vertical Datum 2013 (CGVD2013).

| | | | | |
|-------------------|----------|-------------------|-----------|----------|
| B | 26/05/12 | ISSUED FOR REVIEW | ALW | MAH |
| A | 26/03/20 | ISSUED FOR REVIEW | ALW | MAH |
| NO. | YYMMDD | DESCRIPTION | ISSUED BY | CHECK BY |
| REVISIONS / ISSUE | | | | |

| | |
|---|------------------------|
| KGS GROUP | Yukon Canada |
| MAYO FLOOD MAPPING STUDY | |
| VILLAGE OF MAYO OPEN WATER 5% ANNUAL EXCEEDANCE PROBABILITY | |
| MAY 2026 | SHEET 12 OF 12 |
| | REV: B |