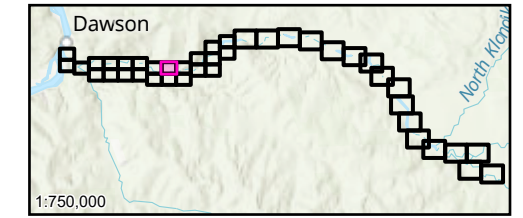


- River Flow Direction
- Point of Interest
- Highway Kilometer Post
- Cross-Section Number
WSE (m) Along Cross-Section
- Major Contour (5m)
- Minor Contour (1m)
- Surveyed Cross-Sections
Used in Hydraulic Model
- Toe of Ice Jam
- Approximate 50% AEP Open
Water Flood Inundation
- Inundation Under Modelled
Open Water Runs
- Inundation Under Modelled
Breakup Ice Jam Runs
- Inundation Extent From
Subsurface Seepage
- Composite Open Water and
Ice Jam Inundation Extent
- Potential Presence of Ice
Debris During Jam Scenario
- Ice Jamming Extents

Map Publication Date: 03/06/2026
0 50 100 150 200 250 m
(At original document size of 11x 17) 1:5,000



Notes
 1. Coordinate System: NAD 1983 CSRS UTM Zone 7N Vertical Datum: CGVD2013, Geoid: CGG2013a
 2. Data Sources: GeoYukon, Canada Lands Survey (CLS) CCM 982, CANVEC
 3. Flood hazard extents shown on these maps are based on LIDAR collected in August, 2024 and topographical and bathymetric data that was collected in June and September 2024.
 4. 50% AEP inundation lines are based on the 50% AEP flow estimate simulation in the hydraulic model which has been calibrated for higher AEP flood events and therefore should be considered approximate.
 5. The content of these Composite Flood Hazard Maps is based on the methods, assumptions, limitations, and analysis documented in the Dawson City and Klondike Valley Flood Mapping Study produced for Yukon Government. Composite Hazard Maps are based on the available data which is current to the time the maps were produced. Such data contains inherent limitations given that the climatic conditions and geomorphic conditions are constantly evolving and cannot be predicted with certainty.