

Well Information

Operator: Devon Canada Corporation
 Well Name: Devon et al Kotaneelee L-38A/ST3
 Location: L-38
 UWI: 300L386010124003
 Pool: Nahanni
 Field: Kotaneelee
 Province / State: Yukon
 Country: Canada



Tel: (403) 262-9229
 Fax: (403) 265-0377
 Email: Progeo@telusplanet.net

Elevations

Reference: Ground **Ground:** 803.65 m
 Cut(-) / Fill(+): -0.6 m **Kelly Bushing:** 810.4 m
 K.B. to Ground: 6.75 m **Casing Flange:** m

Total Depth

Measurement Type	Measured Depth	True Vertical Depth
Drillers TD (Tally)	4065 m	3755.31 m
Drillers TD (Strap or SLM)	4065 m	3755.31 m
Loggers TD	4060 m	3751.18 m

Surface Co - Ordinates

Well Type: Deviated **Longitude:** 1240723.6 **Latitude:** 600732.4
 N / S Co - Ordinates: _____
 E / W Co - Ordinates: _____

Bottom Hole Co - Ordinates

Longitude: _____ **Latitude:** _____
 N / S Co - Ordinates: 1085.78m North of surface location
 E / W Co - Ordinates: 226.75m West of surface location

Drilling Fluid Summary

Fluid Type	From	To
Gel Chem	22 m	922 m
VersaClean	922 m	m

Casing Summary

Type	Hole Size	Casing Size	Landed At
Surface	444.5 mm	339.7 mm	920.7 m
Intermediate	311 mm	244.5 mm	3311 m
Liner	216 mm	177.8 mm	3953 m

Well Summary

Spud Date: Aug 22, 2004 @ 17:45hrs **Contractor:** Akita Rig #58
 TD Date: Mar 5, 2005 @ 11:00hrs **Rig Release Date:** _____





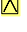


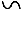
Work Schedule

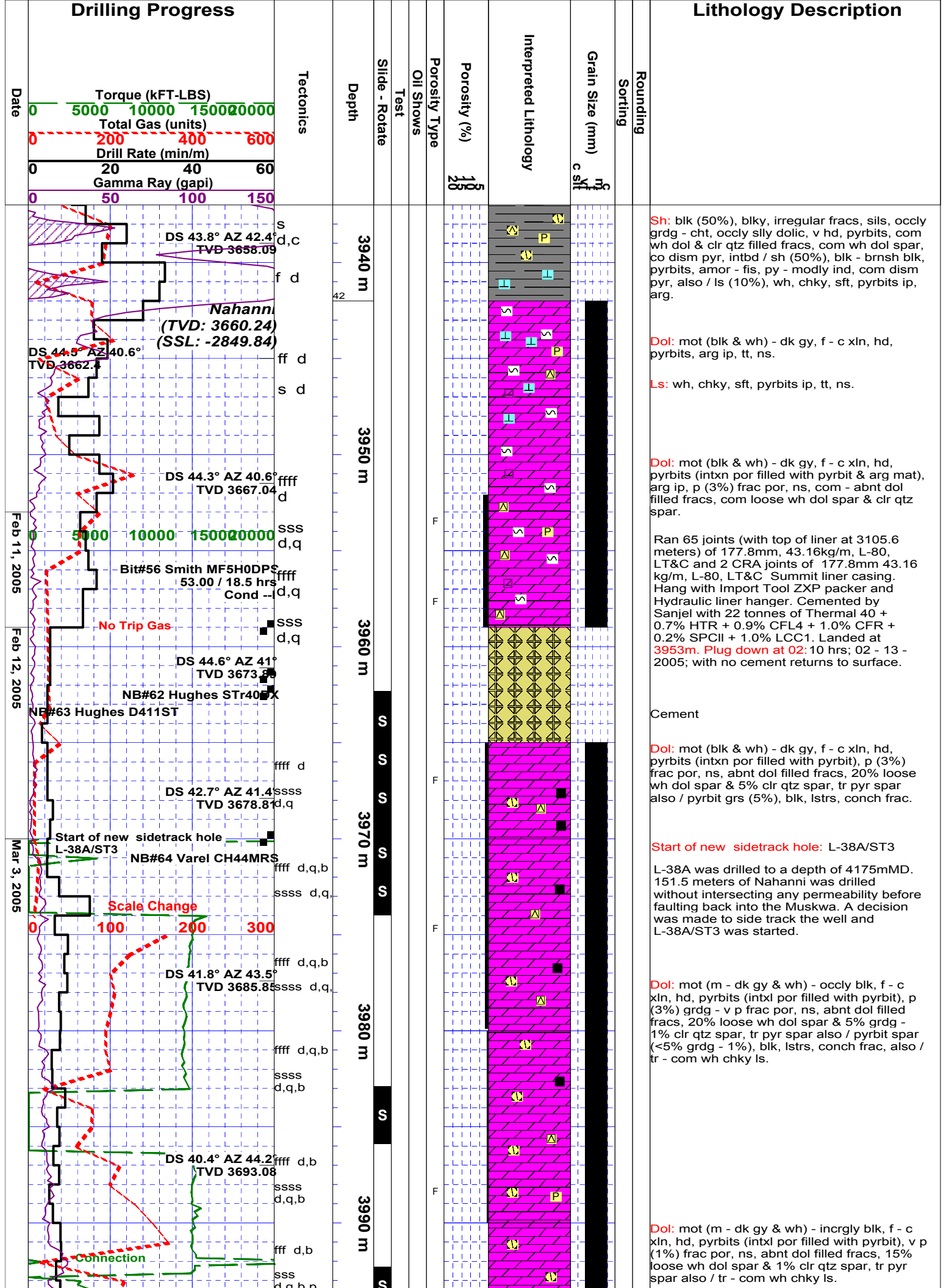
Contractor	Geologist	Log Interval	Dates Logged
ProGeo Consultants	Peter Wasylyk	3970 m - 4065 m	Mar 2, 2005 - Mar 5, 2005

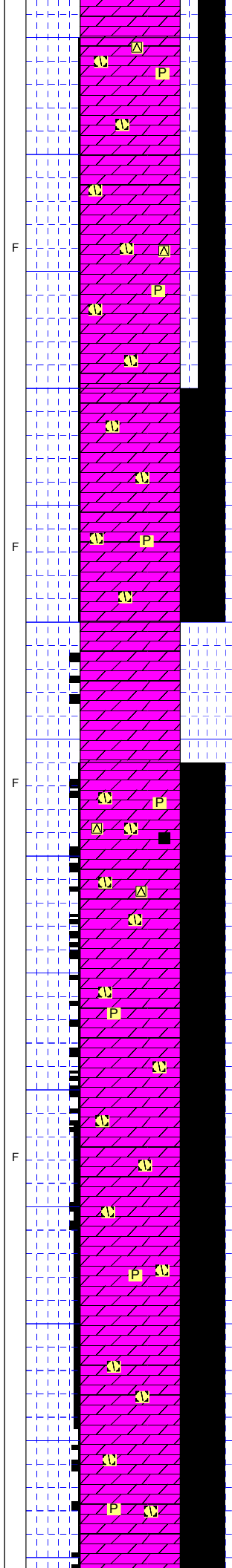
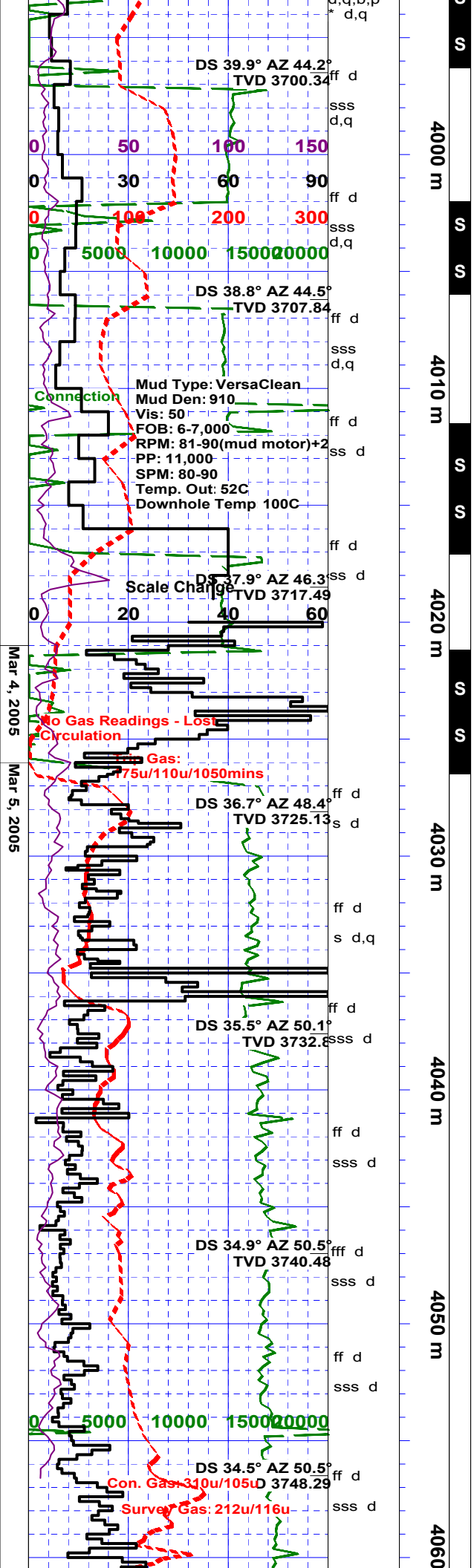
Remarks

Sidetrack # 3
Potential Nahanni Gas Well

Legend

	Dolomite (Rock)
	Cement (Rock)
	Bituminous (Matrix)
F	Fracture (Porosity)
	Dolomite (Grain)
	Quartz (Grain)
	Coal (Grain)
	Calcareous (Accessory)
P	Pyritic (Accessory)
	Bituminous (Accessory)





Dol: mainly matrix dol, mot (blk & wh) - occlly dk gy, f - c xln, hd, pyrbits (intxl por filled with pyrbit), v p (1%) frac por, ns, abnt dol filled fracs, 10 - 15% loose wh dol spar & rr - 1% clr qtz spar, tr pyr spar.

Dol: mainly matrix dol, mot (blk & wh) - occlly dk gy, micxl - m xln - occlly c xln, hd, pyrbits (intxl por filled with pyrbit), v p (1%) frac por, ns, abnt dol filled fracs, 10 % loose wh dol spar, tr - com dism pyr.

No Sample: Lost Circulation

Sliding through interval with porosity, pressure spikes associated with drilling breaks, no torque

Dol: 95% LCM (mainly cal-carb, wh, clr, buff, m - c gred ls) / dol (5%), mainly matrix dol, mot (blk & wh) - occlly dk gy, micxl - m xln - occlly c xln, hd, pyrbits (intxl por filled with pyrbit), f (3-5%) frac por inferred from penetration, torque and lost circulation, ns, abnt dol filled fracs, 10 % loose wh dol spar, tr clr qtz spar, tr dism pyr, tr blk pyrbit grs.

Rotating through interval with porosity, spikes in torque associated with drilling breaks, no pressure spikes, no mud motor in hole.

Dol: 80% LCM (mainly cal-carb, wh, clr, buff, m - c gred ls) / dol (20%), mainly matrix dol, mot (blk & wh) - occlly dk gy, micxl - m xln - occlly c xln, hd, pyrbits (intxl por filled with pyrbit), f (3-5%) frac por inferred from penetration, torque and lost circulation, ns, abnt dol filled fracs, 10 % loose wh dol spar, tr dism pyr.

Dol: 60% LCM (mainly cal-carb, wh, clr, buff, m - c gred ls) / dol (40%), mainly matrix dol, mot (blk & wh) - occlly dk gy, micxl - m xln - occlly c xln, hd, pyrbits (intxl por filled with pyrbit), f (3 - 5%) frac por inferred from torque, penetration and lost circulation, ns, abnt dol filled fracs, up to 15 % loose wh dol spar, tr dism pyr.

Dol: 50% LCM (mainly cal-carb, wh, clr, buff, m - c gred ls) / dol (50%), mainly matrix dol, mot (blk & wh) - occlly dk gy, micxl - m xln - occlly c xln, hd, pyrbits (intxl por filled with pyrbit), f (3-6%) frac por inferred from penetration, torque and lost circulation, ns, abnt dol filled fracs, 10 % loose wh dol spar, tr dism pyr.

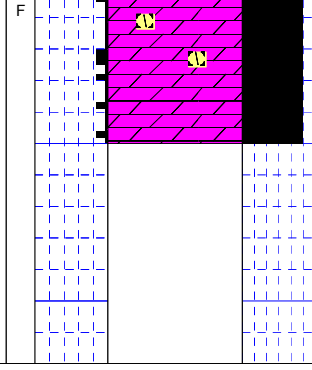
Rotating through interval with porosity, spikes in torque associated with drilling breaks, no pressure spikes, no mud motor in hole.

Mar 6, 2005

Mud Type: VersaClean
Mud Den: 905
Vis: 51

Bit#64 Varel CH44MRS
95.00 / 8.75 hrs
Cond 1-1-NO-A
3-1-WT-BHA
DS 34.1° AZ 50.0°
Total Depth
(TVD: 3755.31)
(SSL: -2944.91)

m
65
4070 m



No difference in dolomite sample descriptions from 4026 to 4065 meters

Total Depth: 4065 meters

Potential Nahanni Gas Well