

Well Information

Operator: Devon Canada Corporation
 Well Name: Devon et al Kotaneelee L-38A
 Location: L-38
 UWI: 300L386010124002
 Pool: Nahanni
 Field: Kotaneelee
 Province / State: Yukon
 Country: Canada



Tel: (403) 262-9229
 Fax: (403) 265-0377
 Email: Progeo@telusplanet.net

Elevations

Reference: Ground **Ground:** 803.65 m
 Cut(-) / Fill(+): -0.6 m **Kelly Bushing:** 810.4 m
 K.B. to Ground: 6.75 m **Casing Flange:** m

Total Depth

Measurement Type	Measured Depth	True Vertical Depth
Drillers TD (Tally)	m	m
Drillers TD (Strap or SLM)	m	m
Loggers TD	m	m

Surface Co - Ordinates

Well Type: Deviated **Longitude:** 1240723.6 **Latitude:** 600732.4
 N / S Co - Ordinates: _____
 E / W Co - Ordinates: _____

Bottom Hole Co - Ordinates

Longitude: _____ **Latitude:** _____
 N / S Co - Ordinates: _____
 E / W Co - Ordinates: _____

Drilling Fluid Summary

Fluid Type	From	To
Gel Chem	22 m	922 m
VersaClean	922 m	m

Casing Summary

Type	Hole Size	Casing Size	Landed At
Surface	444.5 mm	339.7 mm	920.7 m
Intermediate	311 mm	244.5 mm	3311 m
Liner	222 mm	177.8 mm	3953 m

Well Summary

Spud Date: Aug 22, 2004 @ 17:45hrs **Contractor:** Akita Rig #58
 TD Date: Feb 26, 2005 @ 18:00hrs **Rig Release Date:** _____

Work Schedule

Contractor	Geologist	Log Interval	Dates Logged
ProGeo Consultants	Peter Wasylyk	3345 m - 4174 m	Jan 20, 2005 - Feb 27, 2005

Remarks

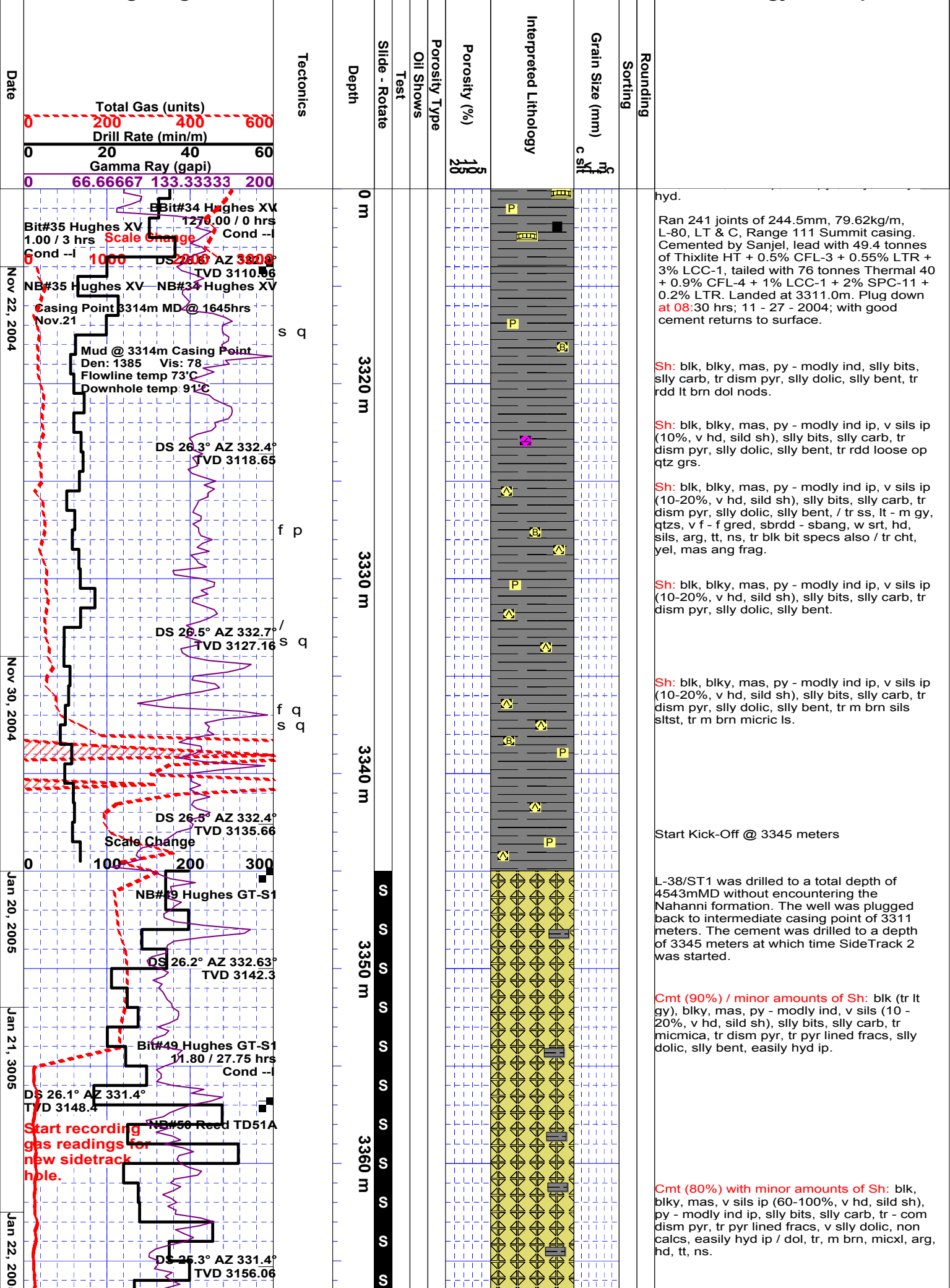
No Sign of Nahanni rock fragments
Preparing to sidetrack to L-38a/ST3

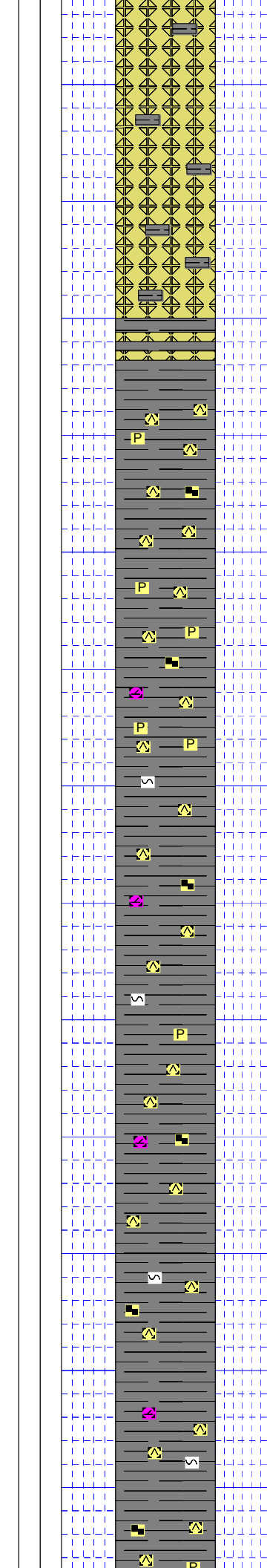
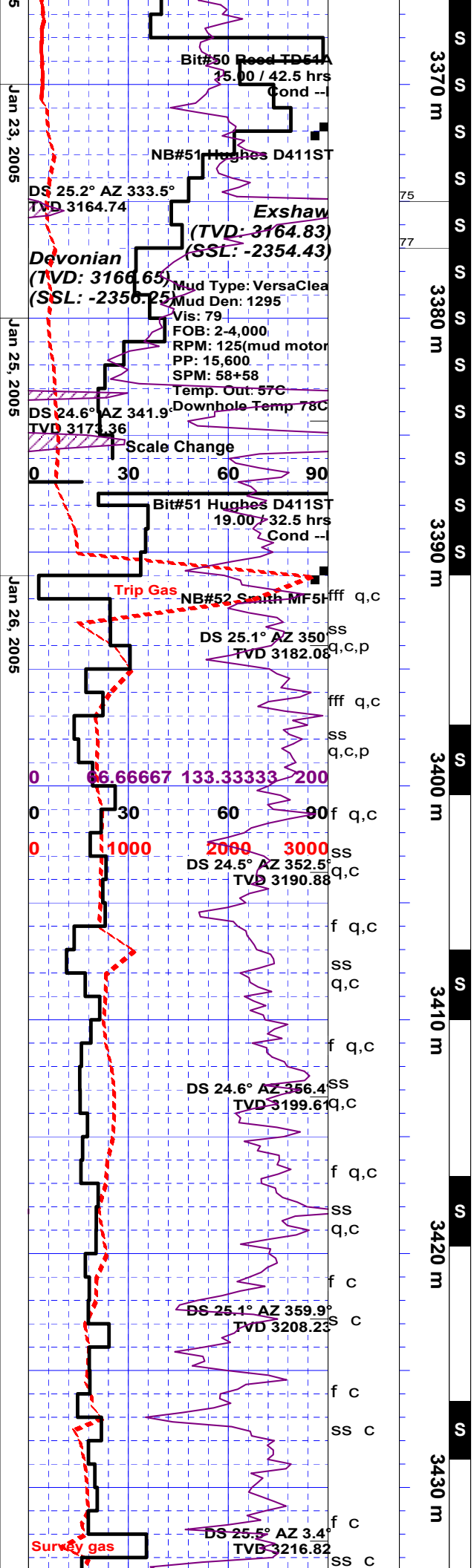
Legend

	Shale black (Rock)
	Cement (Rock)
	Dolomite (Rock)
	Shale medium gray (Rock)
	Shale dark gray (Rock)
	Chert dark (Rock)
	Siltstone (Rock)
	Shale black (Stringers)
	Dolomite (Stringers)
	Shale dark gray (Stringers)
	Chert dark (Stringers)
	Limestone grain supported (Stringers)
	Chert varicolored (Stringers)
	Limestone mud supported (Stringers)
	Siliceous (Cement)
	Dolomitic (Cement)
	Bentonite (Matrix)
	Kaolinite (Matrix)
	Bituminous (Matrix)
F	Fracture (Porosity)
	Siderite (Grain)
	Dolomite (Grain)
	Quartz (Grain)
	Coal (Grain)
P	Pyritic (Accessory)
	Carbonaceous (Accessory)
	Bituminous (Accessory)
	Calcareous (Accessory)

Drilling Progress

Lithology Description





Sh (70%): blk, blkly, mas, v sils ip (60-100%, v hd, sild sh), py - modly ind ip, sily bits, sily carb, tr - com dism pyr, tr pyr lined fracs, v sily dolic, non calcs, easily hyd ip / dol, tr, m brn, micxl, arg, hd, tt, ns intbd / Cmt (30%).

Sh: blk - brnsh blk, blkly, modly ind ip, v sils ip (80%, v hd, sild sh), carb, tr - com dism pyr..

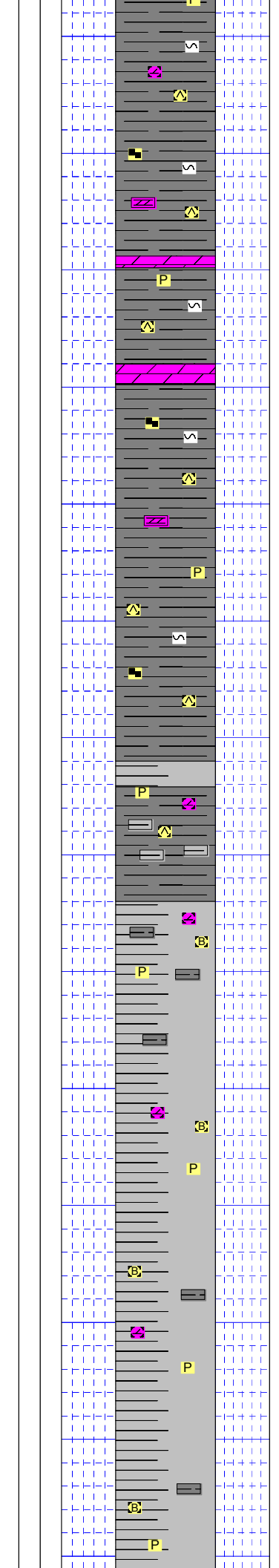
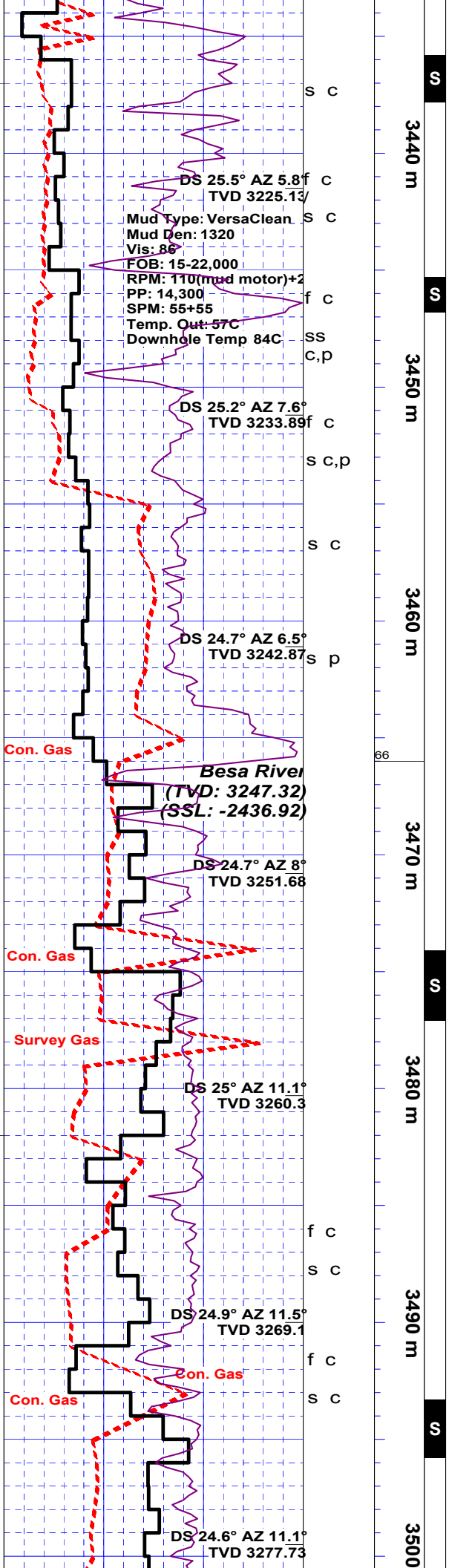
Sh: blk (70%), blkly - occlly sbfis / occ ireg fracs, v hd, sild, sily dolic, carb, intbd / sh (30%), brnsh blk - blk, amor, bits, sft - modly hd, sample is v pyric / abnt dism pyr & pyr lenses, com - abnt fracs pil & perp - bedding, com - abnt clr qtz, wh calc & pyr spar.

Sh: blk (70%), blkly - occlly sbfis / occ ireg fracs, v hd, sild, sily dolic, carb, intbd / sh (30%), brnsh blk - blk, amor, bits, sft - modly hd, / decrg pyr & fracs & spar in sample.

Sh: blk (60-70%), blkly - occlly sbfis / occ ireg fracs, v hd, sild, sily dolic, micmica ip, carb, intbd / sh (30-40%), brnsh blk - blk, amor, bits, sft - modly hd, tr - com dism pyr & pyr lams in sample, tr - com wh calc spar, tr calc filled fracs, also / tr dol, blk - mot blk, micxl - v fy xln, pybits, arg, tt, ns.

Jan 27, 2005

Jan 28, 2005



Sh: blk (60-70%), blk - occl sbfis / occ ireg frags, v hd, sild, slly dolc, micmica ip, carb, intbd / sh (30-40%), brnsh blk - blk, amor, bits, sft - modly hd, tr - com dism pyr & pyr lams in sample, tr - com wh calc spar, tr calc filled frags, also / dol (up to 10%), blk - mot blk, micxl - v fy xln, pybits, arg, tt, ns.

Sh: blk (60-70%), blk - occl sbfis / occ ireg frags, v hd, sild, slly dolc, micmica ip, carb, intbd / sh (30-40%), brnsh blk - blk, amor, bits, sft - modly hd, tr - com dism pyr & pyr lams in sample, tr - com wh calc spar, tr calc filled frags.

Dol: blk, occl mot, micxl - v f xln, pyrbits, arg, hd, tt, ns.

Sh: brnsh blk, amor ip, blk - sbfis ip, bits, sft - v hd, sils ip, micmica ip, tr dism pyr & pyr lams in sample, tr wh calc spar, / dol (up to 5%), blk - mot blk, micxl - v fy xln, pybits, arg, hd, tt, ns.

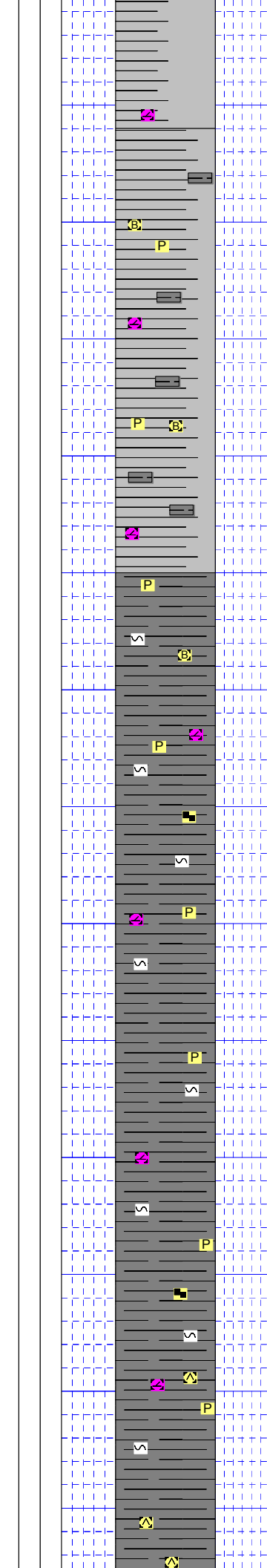
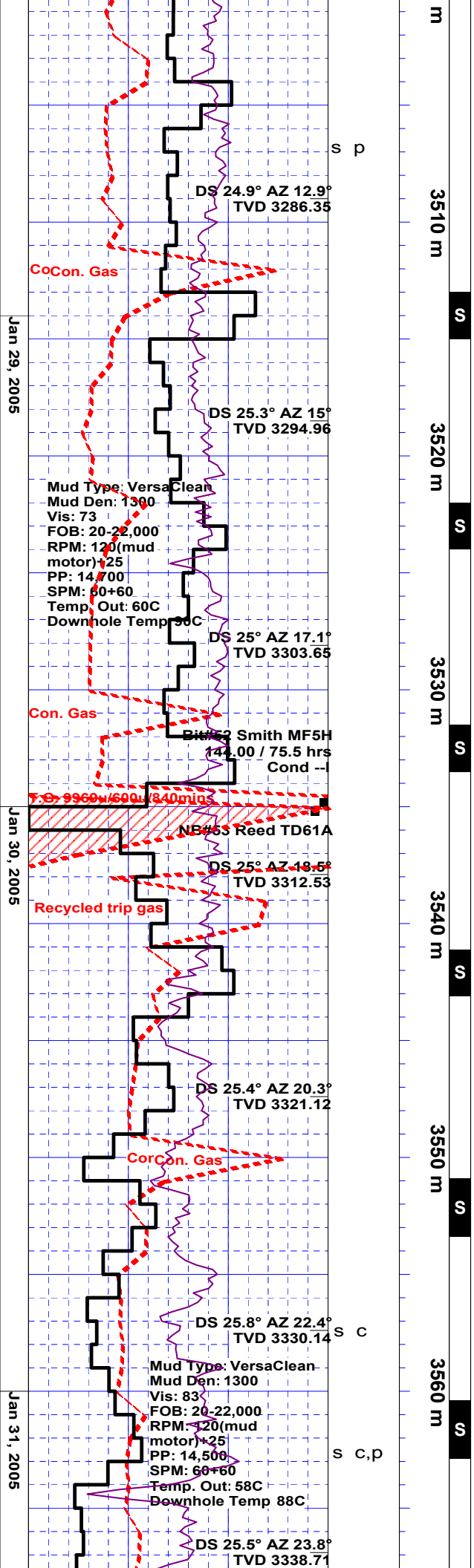
Sh: brnsh blk, amor ip, blk - sbfis ip, bits, sft - v hd, sils ip, micmica ip, slly carb, tr dism pyr & pyr lams in sample, tr wh calc spar, / dol (up to 5%), blk - mot blk, micxl - v fy xln, pybits, arg, hd, tt, ns.

Sh: m - dk gy, amor, sft - modly hd, easily hyd ip, bentic ip, slly dolc, com dism pyr.

Sh: m - dk gy, amor, sft - modly hd, easily hyd ip, bentic ip, slly dolc, com dism pyr.

Sh: m - dk gy, rr blk sh frags, amor, sft - modly hd, easily hyd ip, bentic ip, slly dolc, com dism pyr, tr calc spar, tr calc filled frags.

Sh: m - dk gy, rr blk sh frags, amor, sft - modly hd, easily hyd ip, bentic ip, v slly dolc, com dism pyr.



Sh: mainly dk gy, rr blk sh frags, amor, sft - modly hd, easily hyd ip, bentic ip, v sily dolic, com dism pyr, tr pyr spar.

Sh: blk - dk gy, amor, sft - modly hd, occlly sbfis - blkly, bits ip, easily hyd ip, bentic ip, v sily dolic, com dism pyr.

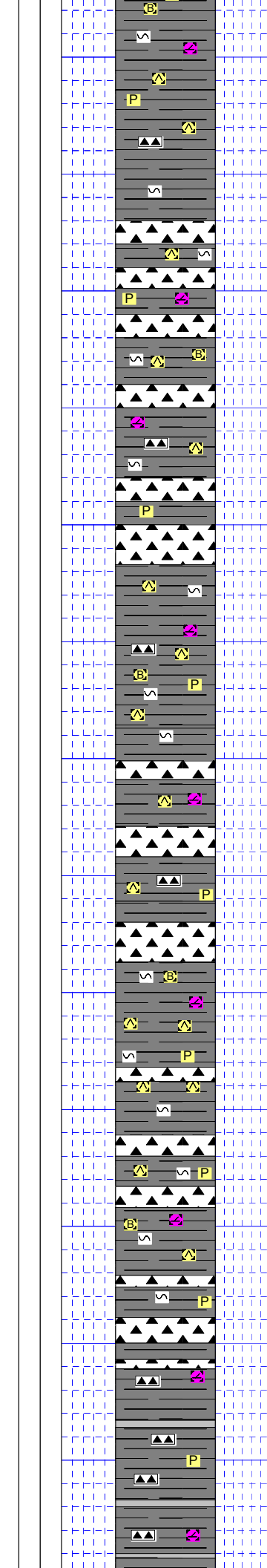
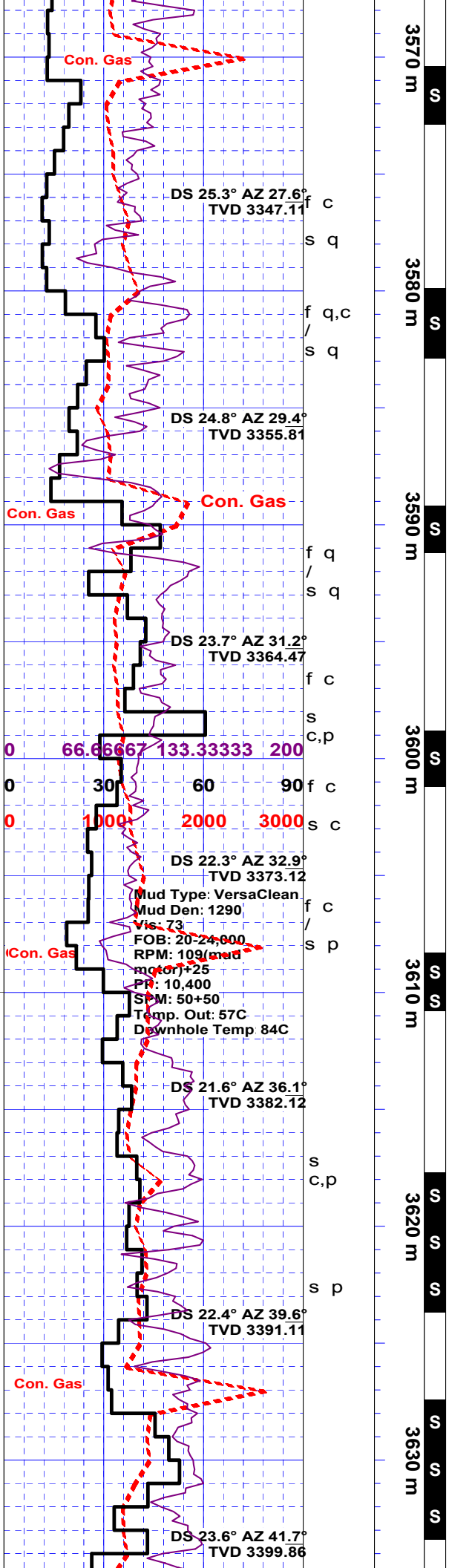
Sh: dk gy - brnsh gy - brnsh blk, amor, sft - modly hd, occlly sbfis - blkly, bits ip, easily hyd ip, bentic ip, v sily dolic, com dism pyr / dol (tr), dk gy - blk, micxl - v v fy xln, arg, pyrbits, tt, ns..

Sh: dk gy - brnsh gy - brnsh blk, amor, sft - modly hd, occlly sbfis - blkly, bits ip, easily hyd ip, bentic ip, sily carb, v sily dolic, com dism pyr, tr pyr lenses.

Sh: dk gy - brnsh blk, amor, sft - modly hd, occlly sbfis - blkly, bits ip, easily hyd ip, bentic ip, sily carb, v sily dolic, rr v slys blk, blkly sh, com dism pyr, tr wh calc spar

Sh: blk (55%), blkly, v sils, v hd, grgd - cht ip, intbd / sh (45%), blk - brnsh blk, blkly - amor - sbfis, sft - hd, bits ip, carb ip, sily dolic, sily bentic, easily hyd ip, com dism pyr.

Feb 1, 2005



Sh: blk (55%), blkly, v sils, v hd, grgd - cht ip, intbd / sh (45%), blk - brnsh blk, blkly - amor - sbfis, sft - hd, bits ip, carb ip, sily dolic, sily bentic, easily hyd ip, com dism pyr also / dol (tr - 5%), blk, micxl - v f xln, hd, arg, pyrbits, tt, ns

Cht: blk, blkly frags, tr conch frags, mainly brit frac, v sils, v hd, tr - com dism pyr, tr qtz lined & filled frags, tr clr qtz spar.

Sh: blk (25%), blkly, v sils, v hd, intbd / sh (75%), blk - brnsh blk, blkly - amor - sbfis, sft - hd, bits ip, carb ip, sily dolic, sily bentic, easily hyd ip, com dism pyr.

Cht: blk, blkly frags, tr conch frags, mainly brit frac, v sils, v hd, tr - com dism pyr, tr qtz lined & filled frags, tr clr qtz spar.

Sh: blk (60%), blkly, v sils, v hd, intbd / sh (40%), blk - brnsh blk, blkly - amor - sbfis, sft - hd, bits ip, carb ip, sily dolic, sily bentic, easily hyd ip, com dism pyr also / dol (tr - 10%), blk, micxl - v f xln, arg, pyrbits, hd, tt, ns.

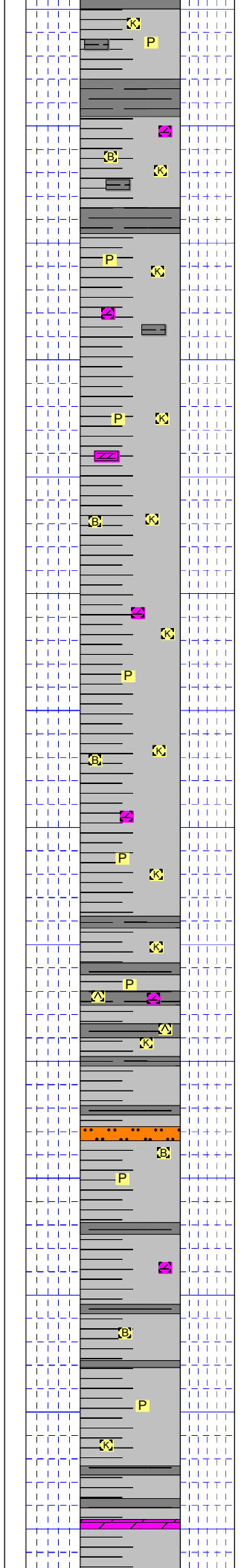
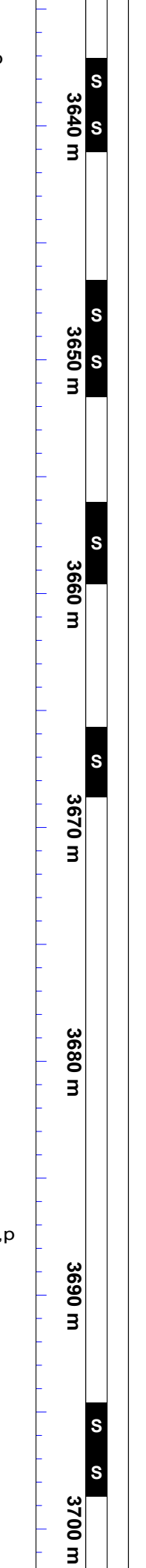
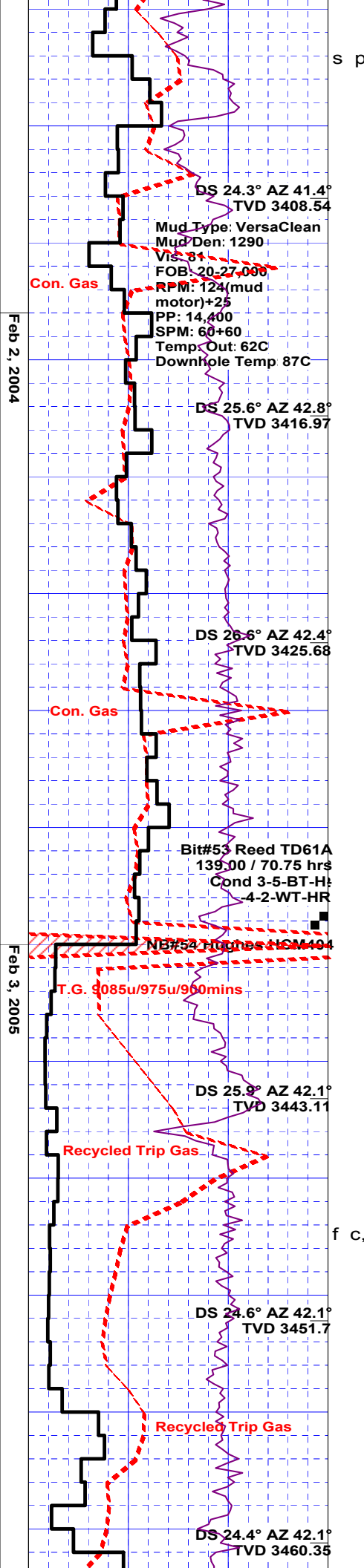
Cht: blk, blkly frags, tr conch frags, mainly brit frac, v sils, v hd, tr - com dism pyr, tr qtz lined & filled frags, tr clr qtz spar.

Sh: blk (40%), blkly, v sils, v hd, intbd / sh (60%), blk - brnsh blk, blkly - amor - sbfis, sft - hd, bits ip, carb ip, sily dolic, sily bentic, easily hyd ip, com dism pyr also / dol (tr), blk, micxl - v f xln, arg, pyrbits, hd, tt, ns.

Cht: blk, blkly frags, tr conch frags, mainly brit frac, v sils, v hd, tr - com dism pyr.

Sh: blk (30%), blkly, v sils, v hd, intbd / sh (70%), blk - brnsh blk, blkly - amor - sbfis, sft - hd, bits ip, carb ip, sily dolic, sily bentic, easily hyd ip, com dism pyr also / dol (tr), blk, micxl - v f xln, arg, pyrbits, hd, tt, ns.

Cht: blk, blkly frags, tr conch frags, mainly brit frac, v sils, v hd, tr - com dism pyr.



Sh: m gy, amor, sft - modly ind, v sily dolic, kaoic, v sily bentic, com dism py,r intbd / sh blk (20%), blk, v sils, v hd & sh (20%), blk - brnsh blk, blk, v amor - sbfis, sft - hd, bits ip, carb ip, sily dolic, sily bentic, easily hyd ip, com dism pyr also / dol (tr - 5%), blk, micxl - v f xln, arg, pyrbits, hd, tt, ns.

Sh: m gy, amor, sft - modly ind, v sily dolic, kaoic, v sily bentic, com dism py,r intbd / sh blk (5%), blk, v sils, v hd & sh (5%), blk - brnsh blk, blk, v amor - sbfis, sft - hd, bits ip, carb ip, sily dolic, sily bentic, easily hyd ip, com dism pyr also / dol (tr - 5%), blk, micxl - v f xln, arg, pyrbits, hd, tt, ns.

Sh: m gy, amor, sft - modly ind, v sily dolic, kaoic, v sily bentic, com dism py,r intbd / sh blk (5%), blk, v sils, v hd also / dol (tr - 5%), blk, micxl - v f xln, arg, pyrbits, hd, tt, ns.

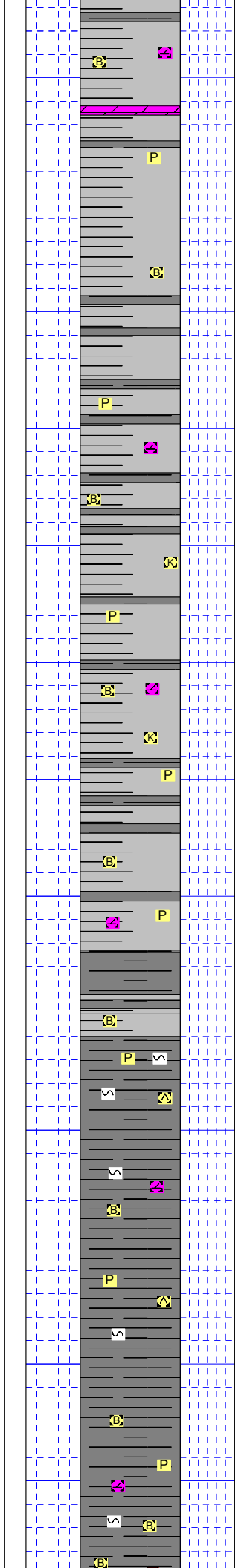
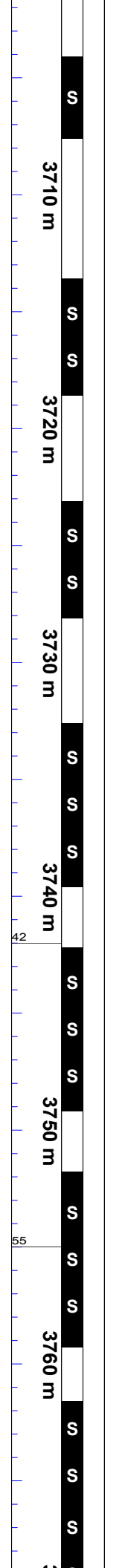
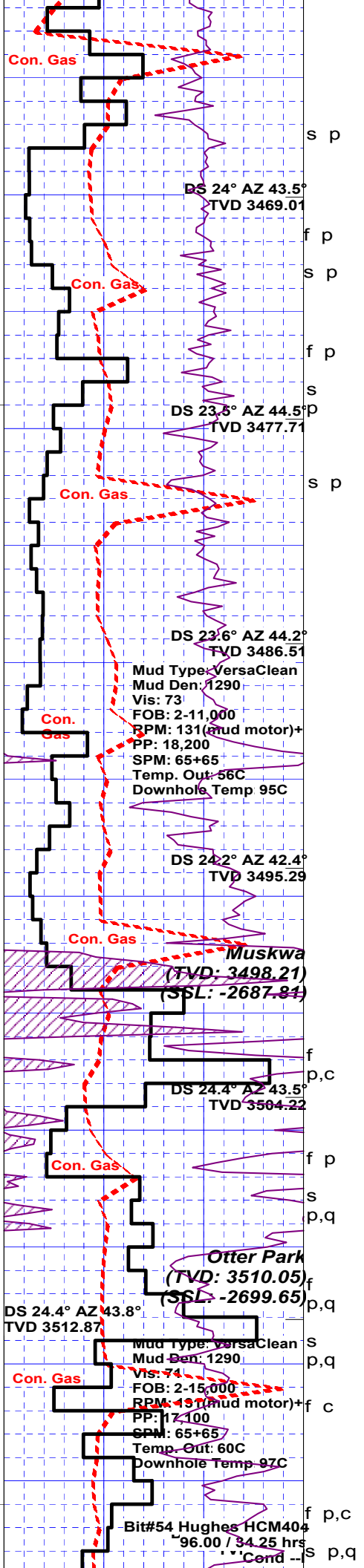
Sh: m gy, amor, sft - modly ind, v sily dolic, kaoic, v sily bentic, com dism pyr, intbd / sh blk (40%), blk, v sbfis, v sils ip, sft (bentic) ip, py - w ind, com dism pyr, tr qtz spar, tr qtz & pyr filled frags, also / dol (tr - 5%), blk, micxl - v f xln, arg, pyrbits, hd, tt, ns, & / sltst (tr), buff, modly hd, sidic.

Sh: m gy, blk, v sbfis, sft - modly ind, v sily dolic, kaoic, v sily bentic, water sensitive (15%), com dism pyr, intbd / sh blk (15%), blk, v sbfis, v sils ip, w ind, com dism pyr, also / sltst (tr - 15%), buff, modly hd, sidic.

Sh: m gy, blk, v sbfis, sft - modly ind, v sily dolic, kaoic, v sily bentic, water sensitive (15%), com dism pyr, intbd / sh blk (15%), blk, v sbfis, v sils ip, w ind, com dism pyr, also / sltst (tr), buff, modly hd, sidic also / dol (tr) blk, micxl, hd, arg, pyrbits, tt, ns.

Feb 4, 2005

Feb 5, 2005



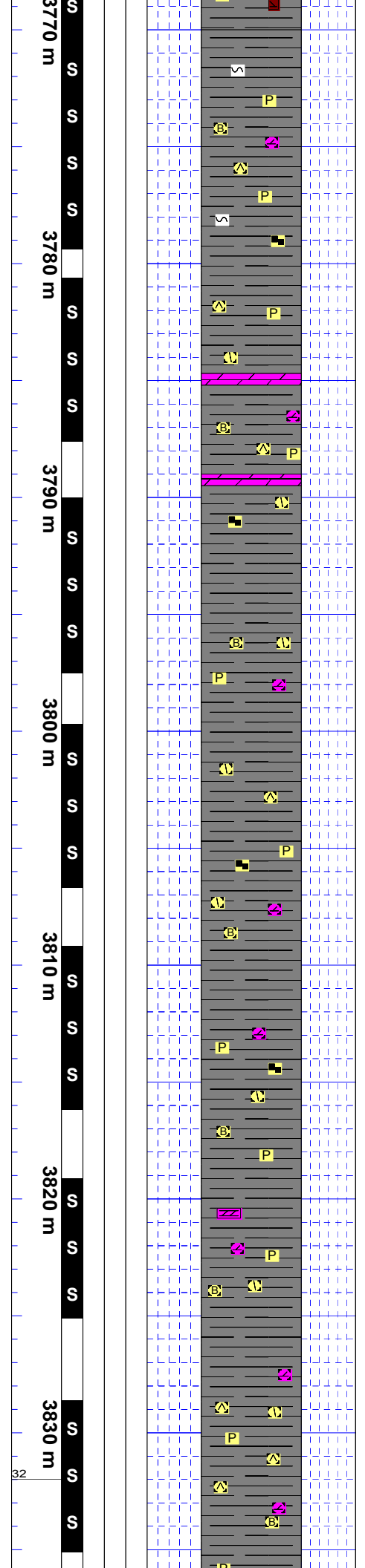
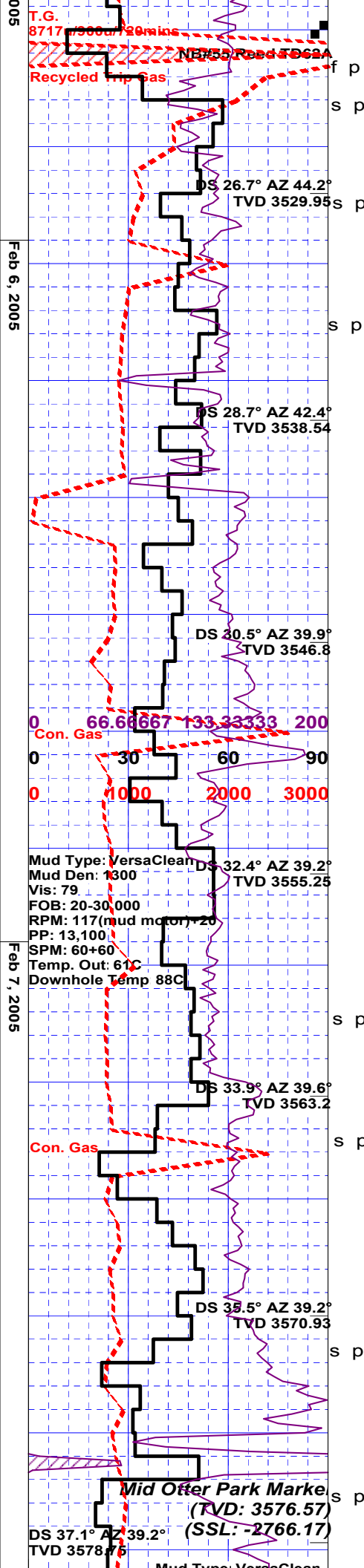
Sh: m gy, grdg - m - dk gy towards the bottom, blk - sbfis, sft - modly ind, v sily dolic, v sily kaoc, v sily bentic, water sensitive (15%), com dism pyr, intbd / sh blk (5-10%), blk - sbfis, v sils ip, w ind, com dism pyr, tr pyr lined fracs, tr pyr spar.

Sh: m gy - m - dk gy towards the bottom, blk - sbfis, sft - modly ind, v sily dolic, v sily kaoc, v sily bentic, water sensitive (15%), com dism pyr, intbd / sh blk (5-15%), blk - sbfis, v sils ip, w ind, com dism pyr.

Sh: blk - occlly brnsh blk, fis - occlly blk, amor ip, bits, bentic, modly ind, com - abnt dism pyr, tr pyr & calc lined fracs, / mnr sh (10%), m - dk gy, aa.

Sh: blk - brnsh blk, fis, occlly blk, sily dolic, bentic, sily carb, sily bits, abnt dism pyr, com pyr lams, tr qtz & pyr filled fracs, tr pyr & qtz spar, intbd / sh (10-15%), blk, blk, v hd, sils - sild sh (cht).

Sh: blk - brnsh blk, fis, occlly blk, sily dolic, bentic, sily carb, sily bits, abnt dism pyr, com pyr lams, tr calc filled fracs, tr sid sph.



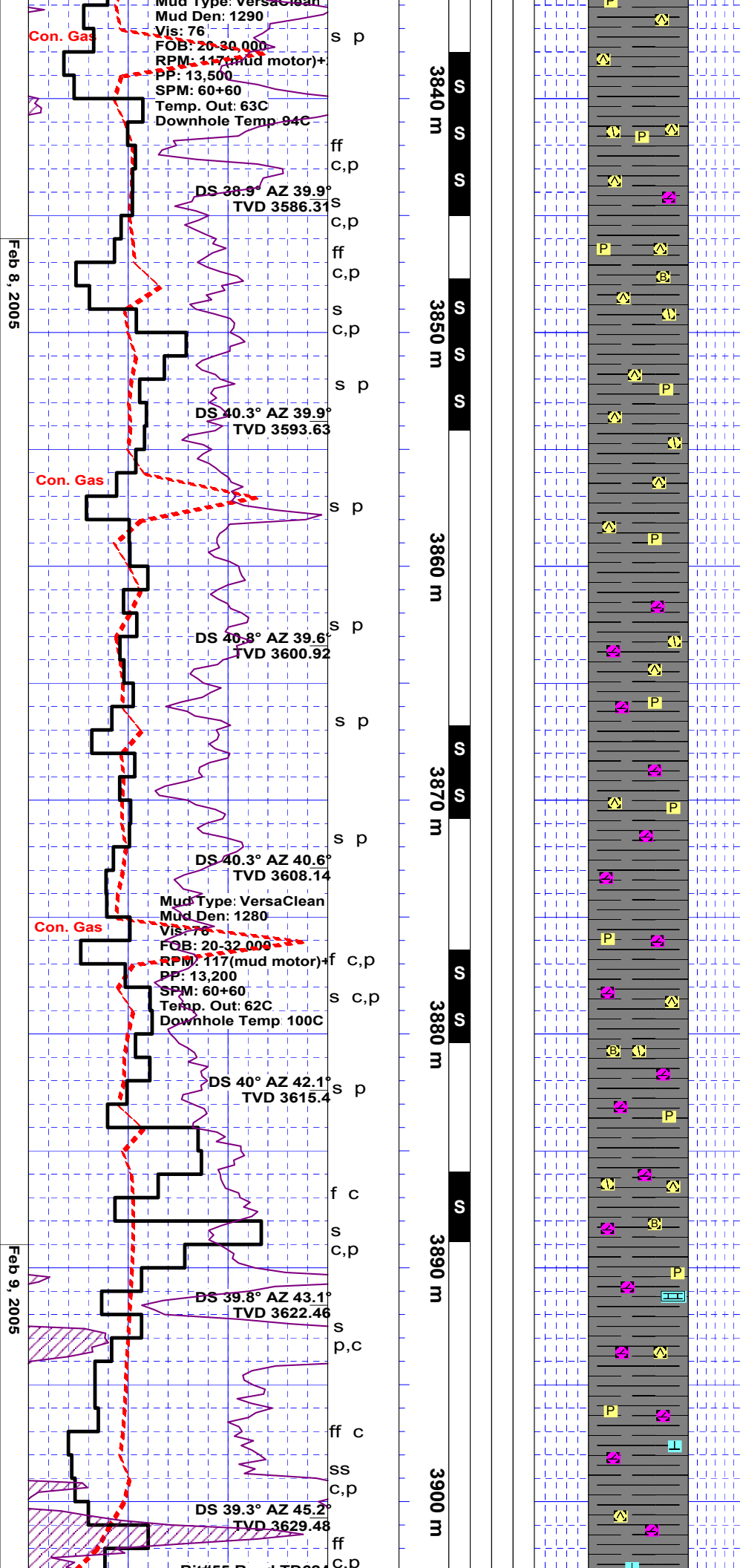
Sh: blk - brnsh blk (85%), amor, fis, occlly blkly, silly dolic, bentic, water sensitive ip, silly carb, bits - pyrbits, abnt dism pyr, com pyr lams, tr calc filled fracs, / sh (15%). blk, blkly, irregular fracs, sils, v hd, carb, pyrbits, abnt dism pyr.

Sh: blk - brnsh blk (90%), amor, fis, occlly blkly, silly dolic, bentic, water sensitive ip, silly carb, bits - pyrbits, abnt dism pyr, com pyr lams, / sh (5%). blk, blkly, irregular fracs, sils, v hd, carb, pyrbits, abnt dism pyr also / dol (5%), blk, micxl - f v xln, v hd, arg, pyrbits, ns, tr m gy brn sid sph.

Sh: blk - brnsh blk (85%), amor, fis, occlly blkly, silly dolic, bentic, water sensitive ip, silly carb, bits - pyrbits, abnt dism pyr, com pyr lams, / sh (10%). blk, blkly, irregular fracs, sils, v hd, carb, pyrbits, abnt dism pyr also / dol (5%), blk, micxl - f v xln, v hd, arg, pyrbits, ns.

Sh: blk - brnsh blk (85%), amor, fis, occlly blkly, silly dolic, bentic, water sensitive ip, silly carb, bits - pyrbits, abnt dism pyr, com pyr lams, tr pyr spar / sh (10%). blk, blkly, irregular fracs, sils, v hd, carb, pyrbits, abnt dism pyr also / dol (5%), blk, micxl - f v xln, v hd, arg, pyrbits, ns.

Sh: blk - brnsh blk (50%), amor, fis, occlly blkly, silly dolic, bentic, water sensitive ip, silly carb, bits - pyrbits, abnt dism pyr, com pyr lams, tr pyr spar / sh (50%). blk, blkly, irregular fracs, sils, v hd, carb, pyrbits, abnt dism pyr also / dol (up to 5%), blk, micxl - f v xln, v hd, arg, pyrbits, ns.

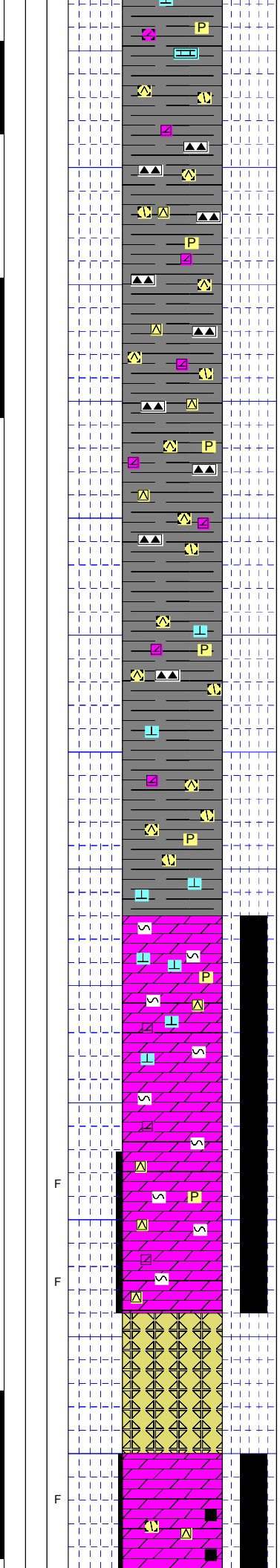
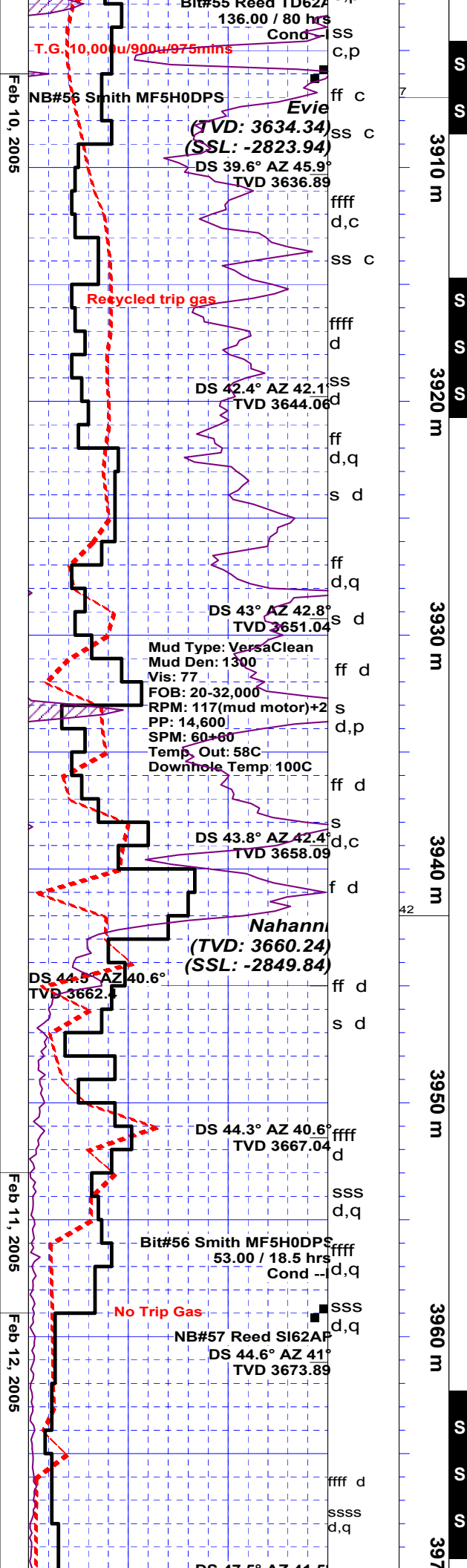


Sh: blk (70%), blkly, irregular frags, sils, v hd, carb, pyrbits, abnt dism pyr, tr - com calc & pyr filled frags, tr - com calc & pyr spar, / sh, blk - brnsh blk (30%), amor, fis, occlly blkly, sily dolc, bentic, water sensitive ip, sily carb, bits - pyrbits, abnt dism pyr, also / ls (tr), wh - lt gy, micxl, pyrbits ip, sily arg, tt, ns.

Sh: blk, blkly, irregular frags, dol & sils, v hd, occlly modly hd, carb, pyrbits, abnt dism pyr, tr pyr spar / dol (tr), blk, micxl, hd, arg, pyrbits, tt, ns.

Sh: blk, blkly, irregular frags, dol & sils, v hd, occlly modly hd, carb, pyrbits, abnt dism pyr, tr pyr spar intbd / sh (30%), blk - brnsh blk ip, amor - blkly - fis ip, py - modly ind, bits, sily bentic, sily calcs & dolc, com dism pyr, also / dol (tr), blk, micxl, hd, arg, pyrbits, tt, ns.

Sh: blk, blkly, irregular frags, dol & sils, occlly sily calcs, hd - v hd, occlly modly hd, carb, pyrbits, com calc filled frags, com calc spar, abnt dism pyr, tr pyr spar, intbd / sh (5-10%), blk - brnsh blk ip, amor - blkly - fis ip, py - modly ind, bits, sily bentic, sily calcs & dolc, com dism pyr, also / dol (tr), blk, micxl, hd, arg, pyrbits, tt, ns.



Sh: blk, blk, irregular frags, sils, occlly grd - cht, occlly silly dolic, v hd, pyrbits, com - abnt wh dol filled frags, com wh dol spar, tr calc spar, abnt dism pyr, intbd / dol (5%), lt gy - blk, micxl - f xln, hd, pyrbits, tt, ns.

Sh: blk, blk, irregular frags, sils, occlly grd - cht, occlly silly dolic, v hd, pyrbits, com wh dol & clr qtz filled frags, com wh dol spar, tr calc spar, abnt dism pyr, intbd / sh (up to 10%), blk - brnsh blk, pyrbits, amor - fis, py - modly ind, com dism pyr.

Sh: blk, blk, irregular frags, sils, occlly grd - cht, occlly silly dolic, v hd, pyrbits, com wh dol & clr qtz filled frags, com wh dol spar, tr wh chky calc spar, abnt dism pyr, intbd / sh (up to 15%), blk - brnsh blk, pyrbits, amor - fis, py - modly ind, com dism pyr, also / dol (tr), wh - lt gy, fy xln, pyrbits, arg, tt, ns.

Dol: mot (blk & wh) - dk gy, fy xln, hd, pyrbits, arg ip, tt, ns.

Sh: blk (50%), blk, irregular frags, sils, occlly grd - cht, occlly silly dolic, v hd, pyrbits, com wh dol & clr qtz filled frags, com wh dol spar, tr wh co dism pyr, intbd / sh (50%), blk - brnsh blk, pyrbits, amor - fis, py - modly ind, com dism pyr, also / ls (10%), wh, chky, sft, pyrbits ip, arg.

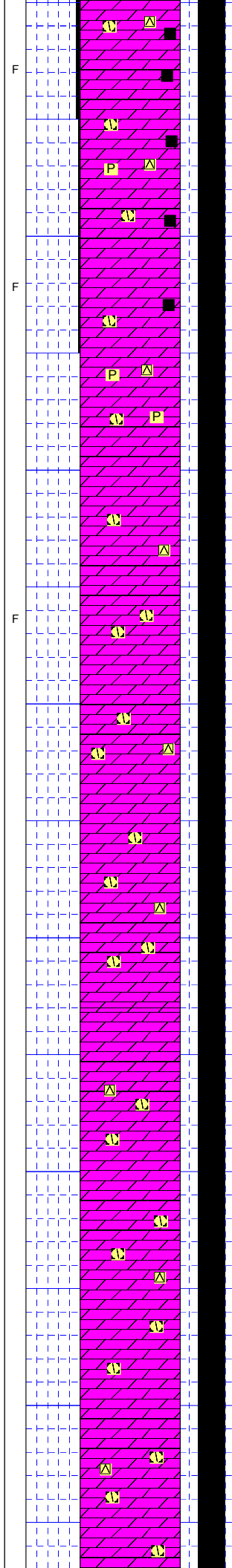
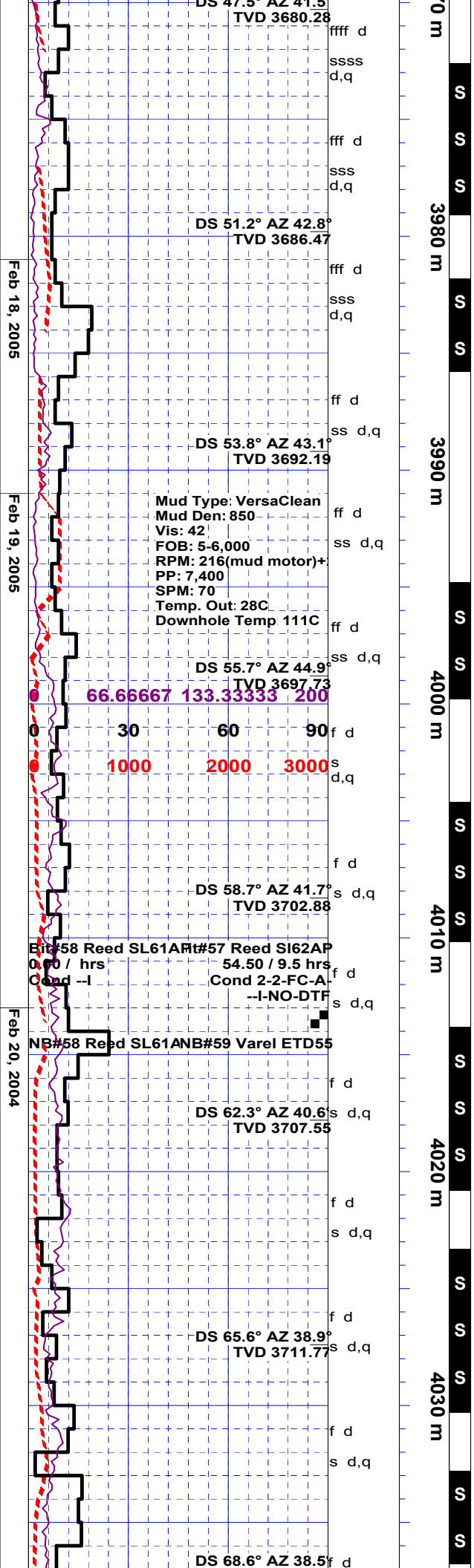
Dol: mot (blk & wh) - dk gy, f - c xln, hd, pyrbits, arg ip, tt, ns.

Ls: wh, chky, sft, pyrbits ip, tt, ns.

Dol: mot (blk & wh) - dk gy, f - c xln, hd, pyrbits (intxn por filled with pyrbit & arg mat), arg ip, p (3%) frac por, ns, com - abnt dol filled frags, com loose wh dol spar & clr qtz spar.

Ran 65 joints (with top of liner at 3105.6 meters) of 177.8mm, 43.16kg/m, L-80, LT&C and 2 CRA joints of 177.8mm 43.16 kg/m, L-80, LT&C Summit liner casing. Hang with Import Tool ZXP packer and Hydraulic liner hanger. Cemented by Sanjel with 22 tonnes of Thermal 40 + 0.7% HTR + 0.9% CFL4 + 1.0% CFR + 0.2% SPCII + 1.0% LCC1. Landed at 3953m. Plug down at 02:10 hrs; 02 - 13 - 2005; with no cement returns to surface.

Dol: mot (blk & wh) - dk gy, f - c xln, hd, pyrbits (intxn por filled with pyrbit), p (3%) frac por, ns, abnt dol filled frags, 20% loose wh dol spar & 5% clr qtz spar, tr pyr spar also / pyrbit grs (5%), blk, lstrs, conch frac.



Dol: mot (blk & wh) - dk gy, f - c xln, hd, pyrbits (intxn por filled with pyrbit), tr p (3%) frac por, ns, com - abnt dol filled fracs, 15% loose wh dol spar & <5% clr qtz spar also / pyrbit grs (<5% grd - tr), blk - brnsh blk, lstrs, conch frac.

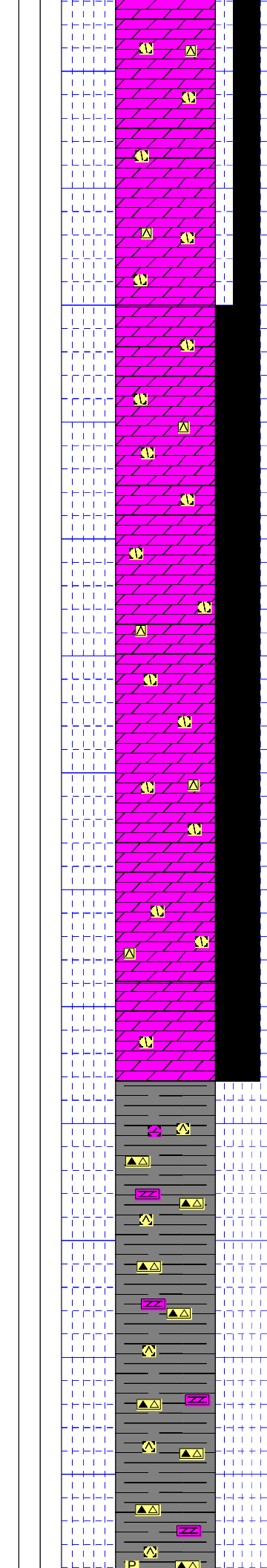
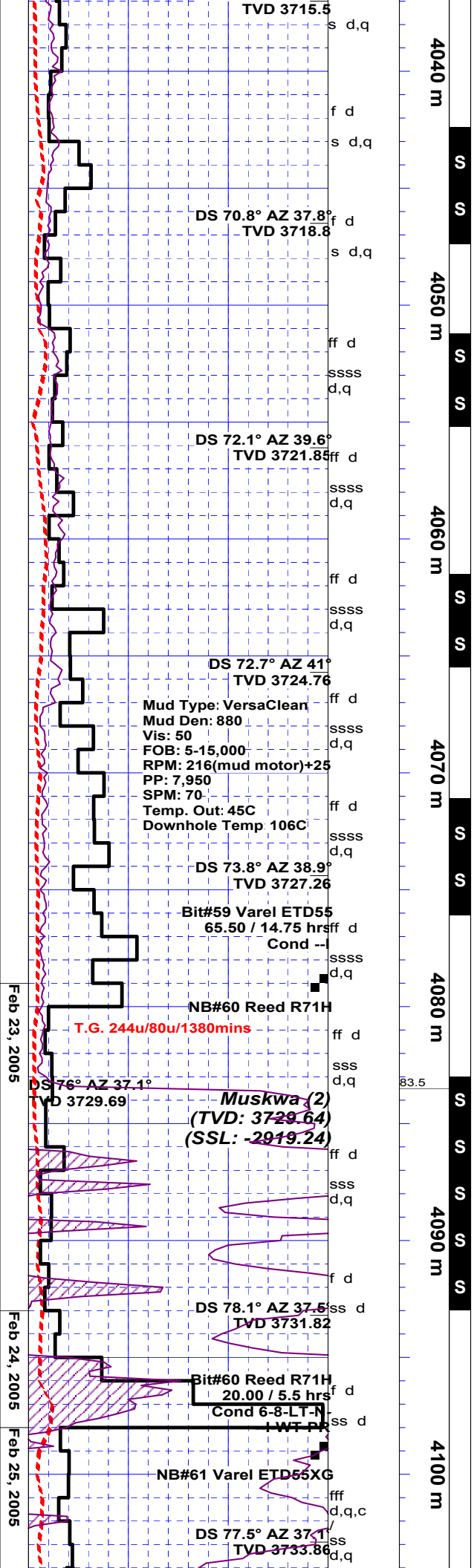
Dol: mot (blk & wh) - dk gy, f - c xln, hd, pyrbits (intxn por filled with pyrbit), tr p (3%) frac por, ns, com - abnt dol filled fracs, 10% loose wh dol spar & <5% clr qtz spar, tr dism pyr.

Dol: blk - mot (blk & wh) - dk gy, f - c xln, hd, incrg pyrbits (intxn por filled with pyrbit), tr frac por, ns, com - abnt dol filled fracs, 10 - 15% loose wh dol spar (c xln) & tr clr qtz spar (c xln).

Dol: blk - mot (blk & wh) - dk gy, f - c xln, hd, incrg pyrbits (intxn por filled with pyrbit), tt, ns, tr - com dol filled fracs, 5% loose wh dol spar (c xln) & 1% clr qtz spar (c xln).

Dol: blk - mot (blk & wh) - dk gy, f - m - occlly c xln, hd, v pyrbits (intxn por filled with pyrbit), tt, ns, tr - com dol filled fracs, 5% loose wh dol spar (c xln) & 1% clr qtz spar (c xln), tr - com dism pyr.

Dol: blk - mot (blk & wh) - dk gy, f - m - occlly c xln, hd, v pyrbits (intxn por filled with pyrbit), tt, ns, tr - com dol filled fracs, 5% loose wh dol spar (f - m - occlly c xln) & 1% clr qtz spar (f - m - occlly c xln), tr - com dism pyr. Note very poor sample quality - chip samples are pulverized to fine to medium grained in size.



Dol: blk - mot (blk & wh) - dk gy, f - m - occlly c xln, hd, v pyrbits (intxn por filled with pyrbit), tt, ns, tr - com dol filled fracs, up to 20% loose wh dol spar (f - m - occlly c xln) & 1% clr qtz spar (f - m - occlly c xln), tr - com dism pyr / dol (tr-5%), blk, micxl, arg. hd, pyrbits, tt, ns.

Dol: blk - mot (blk & wh) - dk gy, f - m - occlly c xln, hd, v pyrbits (intxn por filled with pyrbit), tt, ns, tr - com dol filled fracs, up to 10% loose wh dol spar (f - m - occlly c xln) & tr clr qtz spar (f - m - occlly c xln), tr - com dism pyr / dol (tr), blk, micxl, arg. hd, pyrbits, tt, ns also / sh (tr), brnsh blk, amor, modly ind bits.

Dol: blk - mot (blk & wh) - dk gy, f - m - occlly c xln, hd, v pyrbits (intxn por filled with pyrbit), tt, ns, tr - com dol filled fracs, up to 5% loose wh dol spar (f - m - occlly c xln), tr - com dism pyr / dol (tr - com), blk, micxl, arg. hd, pyrbits, tt, ns also / sh (tr - com), brnsh blk, amor, modly ind bits.

Sh: blk, blk, irreg frac, v sils (grdg - cht ip), v hd, 5-10% qtz & dol filled fracs, tr dis pyr.

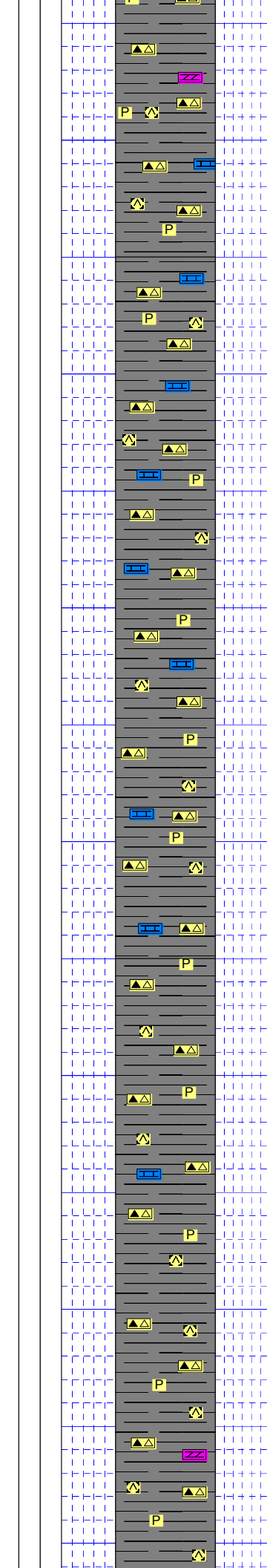
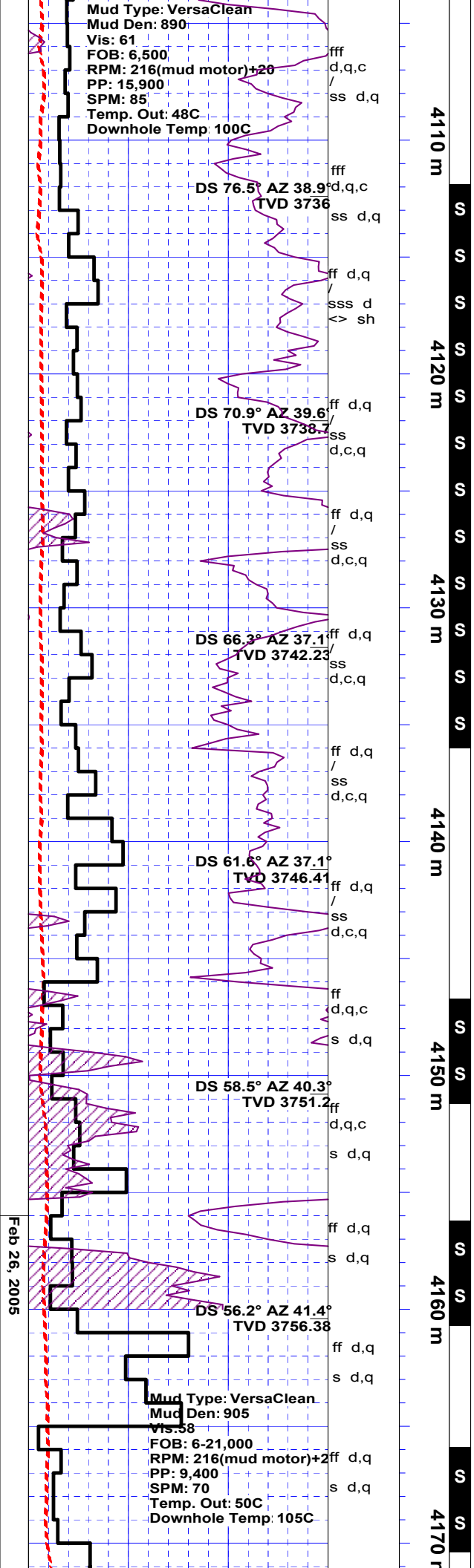
Dol: blk - mot (blk & wh) - dk gy, f - m - occlly c xln, hd, v pyrbits (intxn por filled with pyrbit), tt, ns, tr - com dol filled fracs, up to 5% loose wh dol spar (f - m - occlly c xln), tr qtz spar / one terminated qtz xl, tr - com dism pyr / dol (tr - com), blk, micxl, arg. hd,

Feb 23, 2005

Feb 24, 2005

Feb 25, 2005

pyrbits, tt, ns, / tr wh chky ls.



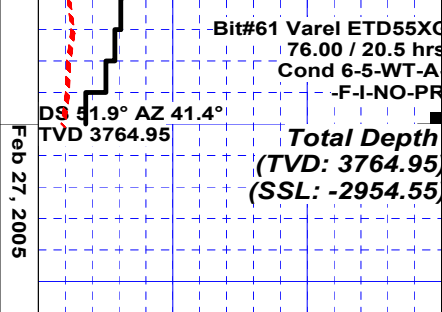
Sh: blk, blkly, irreg frac, v sils (grdg - cht ip), v hd, 5-10% qtz & dol filled frags, tr dis pyr / sh (tr-5%), dk gy, fis, calcs, dolic, modly hd, intbd / dol (10%), blk - occlly mot, micxl - f xln, slly arg, pyrbits, tt, ns, / tr - com dol & qtz filled frags & spar.

Sh: blk, blkly, irreg frac, v sils (grdg - cht ip), v hd, 5-10% qtz & dol filled frags, tr dis pyr / sh (tr-5%), dk gy, fis, calcs, dolic, modly hd, also / sh (5%), brnsh blk, amor, py ind, bits, intbd / ls (10%), blk - occlly mot, micxl - f xln, slly arg, dolic, pyrbits, tt, ns, / tr - com dol & qtz filled frags & spar.

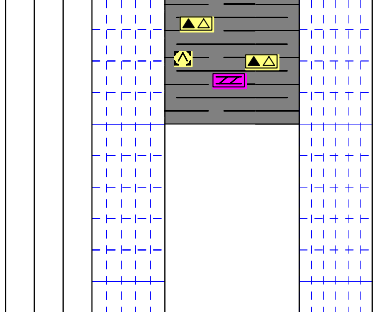
Sh: blk, blkly, irreg frac, v sils (grdg - cht ip), v hd, 5-10% qtz & dol filled frags, tr - com wh dol & qtz spar, tr clr qtz spar, tr calc filled frags, tr calc spar, tr skss, tr dis pyr & pyr lams intbd / ls (up to 15%), mot blk & gy - m gy, micxl - micric, modly hd, arg, dolic, tt, ns.

Sh: blk, blkly, irreg frac, v sils (grdg - cht ip), v hd, 5-10% qtz & dol filled frags, tr - com wh dol spar, rr clr qtz spar, tr calc filled frags, tr calc spar, tr skss, tr dis pyr & pyr lams intbd / ls (5-10%), mot blk & gy - m gy, micxl - micric, modly hd, arg, dolic, tt, ns, tr wh chky ls.

Sh: blk, blkly, irreg frac, v sils (grdg - cht ip), v hd, 5-10% qtz & dol filled frags, tr - com wh dol spar, rr clr qtz spar, tr calc filled frags, tr calc spar, com dis pyr & pyr lams intbd / dol (<5%), mot blk & gy - m gy, micxl - v f xln, modly hd, arg, calcs, tt, ns, tr pyr spar.



ff d,q
 d,q
 75
 4180 f



No sign of any rock fragments resembling the Nahanni formation in the bottoms up sample.