



Atlin Highway 2019 LiDAR and Airphoto Data Capture and Processing

LiDAR and Air Photo Report

**Our File:
2611 19372-02**

Submitted To:

Transportation Engineering
Branch Government of the Yukon
Box 2703, Whitehorse, Yukon Y1A 2C6 Tel: (867) 633-7931

Attention: Michael Kearney CLS, P.Eng

Submitted By:

McElhanney Ltd.

200-858 Beatty Street

Vancouver, BC

V6B 1C1

Tel: (604) 424 4784

Contact: Azadeh Koohzare, PhD., PEng.

October 9, 2019

Table of Contents

1.	Introduction.....	3
2.	Mission Plan.....	3
3.	Equipment.....	4
4.	Flight Plan	5
5.	Data Processing.....	7
6.	Point Density.....	8
7.	Calibration.....	8
8.	Quality Control.....	9
9.	Deliverables	10

List of Figures and Tables

Figure 1	Aerial survey	3
Figure 2	Optech Galaxy components	4
Figure 3	Phase One components	4
Table 1	Flight Parameters	5

1. Introduction

McElhanney Consulting Services Ltd (MCSL) performed a LiDAR and aerial photography acquisition for Atlin highway, approximately 42 Km long corridor, as shown in Figure 1.

The site was flown June 14, 2019 in conjunction with another project. This report describes the acquisition, post-processing and quality control methodology used to produce the final elevation models.

2. Mission Plan

Project: Atlin LiDAR and Aerial photo Project

Date: 2019-06-14

Location: Atlin highway

Topography: low relief

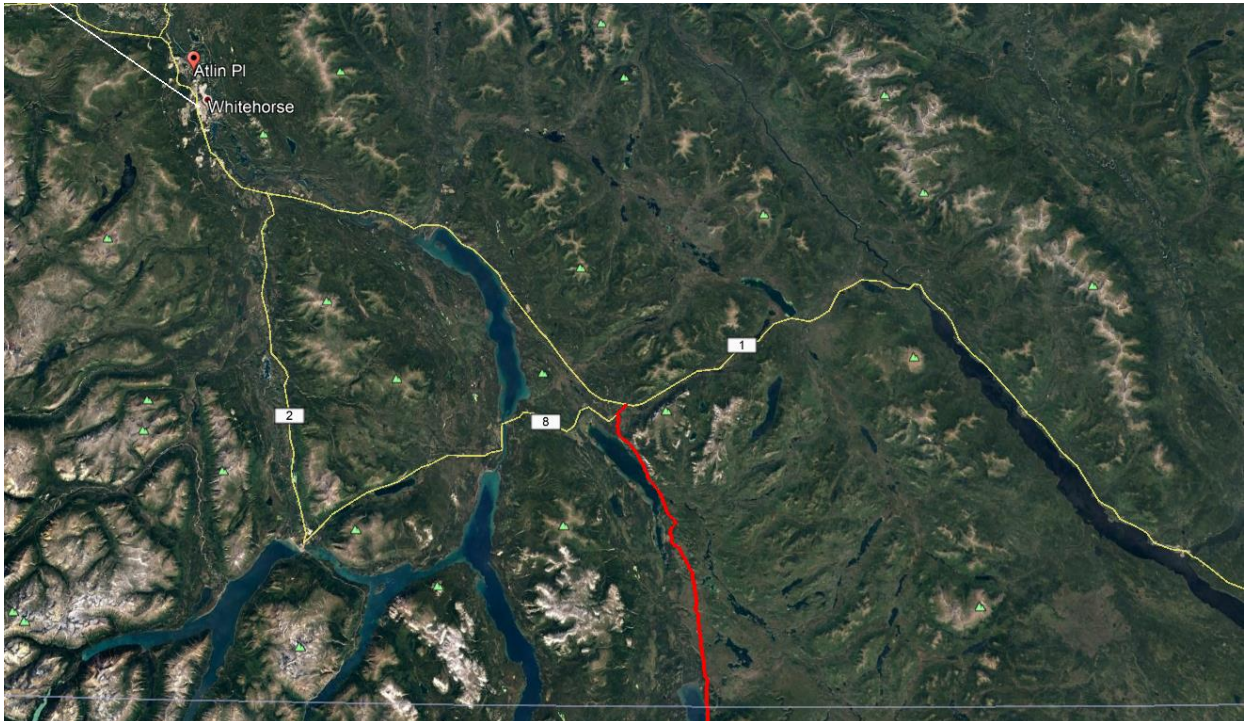


Figure 1– LiDAR Survey Site

3. Equipment

McElhanney utilized the Optech Galaxy system for LiDAR Capture (Figure 2).

For Product Specifications of Optech Galaxy please see

<http://www.teledyneoptech.com/index.php/product/optech-altm-galaxy/>

The Galaxy was mounted on Piper Navajo fixed wing Aircraft.



Figure 2 – Optech Galaxy components

On Board Camera Phase One iXU-RS1000 RGB simultaneous capture (Figure 3.)

Phase One Industrial – Cameras iXU-RS1000 series



iXU-RS1000 series

Camera Type	iXU-RS1000
Camera Specifications	
Lens type	Rodenstock / Schneider-Kreuznach
Focal length F (mm)	RS lenses: 32, 40, 50, 70, 90, 110, 150 SK lenses: 28, 55, 80, 110, 150, 240
FOV (across line, deg)	86.5 (28mm) – 12.9 (240mm)
FOV (along flight line, deg)	70.3 (28mm) – 9.7 (240mm)
Aperture	f/5.6
Exposure principle	Leaf shutter
Exposure (sec)	1/2000 to 1/125
Image capture rate	1 frame every 0.6 sec
Light Sensitivity (ISO)	50-6400
Dynamic Range (db)	>84
Spectral characteristics	R,G,B
Sensor Specifications	
CMOS pixel size (µm)	4.6
CMOS array (pix)	11,608 x 8,708
Analog-to-digital-conversion (bit)	14
Frame / Image Specifications	
Frame geometry	Central projection
Image size (pixel)	11,608 x 8,708
Image volume (MP)	100
Color	RGB or NIR
Typical image size (MB)	300
Image format	Phase One RAW, TIFF, JPEG
Operational Specifications	
Power Consumption	< 10W
Dimensions (depends on lens)	97.4 x 93 x <218 mm
Weight (depends on lens)	< 2 kg

PHASE ONE
Specialty Imaging Solutions

Figure 3 – Phase One Camera Series

4. Flight Plan

Table 1: Flight Parameters

Strip ID	Start [s]	Stop [s]	PRF [kHz]	Scan Frequency [Hz]	Scan Swath [deg]	Speed Avg [m/s]	Height Avg [m]
1	489702.5	489758.1	450	66	50.0	73.2	2145.5
2	489906.9	489946.6	450	66	50.0	78.0	2183.9
3	490088.0	490171.6	450	66	50.0	78.2	2183.6
4	490265.3	490356.4	450	66	50.0	78.9	2105.0
5	490457.6	490693.3	450	66	50.0	77.5	2134.0
6	490830.9	490978.0	450	66	50.0	77.4	2098.7
7	491208.9	491246.8	450	66	50.0	77.7	2109.8
8	491373.2	491492.3	450	66	50.0	78.3	2148.9
9	491641.1	491733.1	450	66	50.0	78.9	2159.6
10	491882.8	492148.4	450	66	50.0	76.5	2140.0
11	492292.6	492503.1	450	66	50.0	79.5	2153.7
12	492721.9	492726.1	450	66	50.0	79.4	2120.8
13	492839.5	492874.5	450	66	50.0	77.7	2154.8
14	492985.1	493021.1	450	66	50.0	79.6	2142.9
15	493138.2	493176.9	450	66	50.0	79.5	2140.2
16	493272.5	493502.7	450	66	50.0	79.8	2109.1
17	493665.5	493861.1	450	66	50.0	80.5	2114.1
18	494210.6	494358.6	450	66	50.0	81.3	2087.1
19	494507.4	494620.8	450	66	50.0	80.9	2102.1
20	494735.1	494768.3	450	66	50.0	78.8	2088.7
21	494892.8	495044.6	450	66	50.0	78.4	2119.2
22	495214.9	495337.6	450	66	50.0	81.2	2122.1
23	495524.7	495743.6	450	66	50.0	79.3	2151.4
24	495907.4	496056.3	450	66	50.0	81.2	2131.5

Strip ID	Start [s]	Stop [s]	PRF [kHz]	Scan Frequency [Hz]	Scan Swath [deg]	Speed Avg [m/s]	Height Avg [m]
25	496295.6	496356.8	450	66	50.0	79.0	2147.6
26	496450.6	496565.9	450	66	50.0	76.2	2089.1
27	496685.8	496768.4	450	66	50.0	78.7	2124.4
28	496845.4	496922.4	450	66	50.0	74.2	2135.7
29	497023.7	497116.6	450	66	50.0	79.2	2119.1
30	497279.4	497448.9	450	66	50.0	74.2	2265.7
31	497507.1	497545.0	450	66	50.0	71.0	2340.1
32	497655.5	497822.2	450	66	50.0	74.5	2339.8
33	497877.7	497993.0	450	66	50.0	75.3	2386.8
34	498097.9	498147.9	450	66	50.0	77.2	2369.8
35	498277.2	498314.1	450	66	50.0	79.1	2379.5
36	498432.1	498549.3	450	66	50.0	76.7	2391.3
37	498670.1	498808.7	450	66	50.0	77.9	2331.9
38	498901.6	499041.1	450	66	50.0	75.4	2426.8
39	499196.5	499251.1	450	66	50.0	78.5	2406.6
40	499351.4	499520.9	450	66	50.0	77.9	2326.2
41	499703.3	499820.5	450	66	50.0	77.1	2324.6
42	499947.8	500037.9	450	66	50.0	77.2	2317.3
43	500202.6	500249.8	450	66	50.0	79.1	2296.7
44	500357.6	500429.9	450	66	50.0	73.8	2317.0
45	500549.8	500668.9	450	66	50.0	81.1	2199.3
46	503692.4	503712.5	550	66	50.0	74.9	1231.1
47	503842.7	503865.6	550	66	50.0	68.0	1232.1
48	503978.9	504000.0	550	66	50.0	72.9	1231.4
49	504120.8	504144.7	550	66	50.0	66.2	1247.4
50	504230.0	504251.1	550	66	50.0	72.8	1233.6
51	504365.3	504387.3	550	66	50.0	67.1	1235.4

Strip ID	Start [s]	Stop [s]	PRF [kHz]	Scan Frequency [Hz]	Scan Swath [deg]	Speed Avg [m/s]	Height Avg [m]
52	504476.4	504492.8	550	66	50.0	67.3	1237.0
53	504593.1	504614.1	550	66	50.0	70.5	1235.6
54	504721.9	504743.9	550	66	50.0	69.0	1235.0
55	504849.7	504871.7	550	66	50.0	69.8	1245.0
56	505056.9	505081.7	550	66	50.0	64.0	1845.3
57	505171.8	505193.7	550	66	50.0	69.1	1824.0
58	505279.1	505304.8	550	66	50.0	62.5	1847.2
59	505407.9	505434.5	550	66	50.0	67.0	1843.8
60	505506.8	505540.9	550	66	50.0	68.1	1844.1

5. Data Processing

All GPS and IMU data was processed using PosPac MMS 8.4 software. The laser data was extracted using Teledyne Optech LMS software. The GPS antenna position in the airplane was calculated by post-processing the raw data at 1 second intervals for the entire flight.

We have used Precise Point Positioning (PPP) for the airborne GPS processing, and the coordinates were calculated in NAD83-CSRS.

The airborne positions were combined with the post-processed platform (aircraft) attitude information to generate a time tagged position and orientation solution.

The standard deviation of the airborne GPS solution for using KAR (Kinematics Ambiguity Resolution) was estimated to be 0.03, 0.04 and 0.05m in East, North and height directions, respectively.

The estimated values for the GPS antenna position were used with the laser ranges and platform angles to compute all the individual X, Y, and Z coordinates for each laser

return in each flight line. The result is a processed point cloud containing all measured points.

6. Point Density

Bare earth point density varies with canopy closure, understory density and topographic features. Mean density of the point cloud was measured at nominal 13.6 pts/m² and the Bare earth point density was measured at nominal 2.85 pts/m².

7. Calibration

System: Optech ALTM Galaxy S/N 5060392

LiDAR Calibration flight:

Calibration Date: June 14, 2019 Location: Whitehorse, Yukon

The LiDAR system calibration was flown over calibration site. The lever arms (offset between GPS antenna IMU and Laser Mirror), were measured as:

Lever Arms

GPS Lever arms in (m):

x: 0.28 y: -0.445 z: -1.196

IMU Lever arms in (m):

x: 0 y: 0 z: 0

There were a total number of 10 flight lines for calibration: 9 basic orthogonal lines for LMS software analysis and 1 redundant line for better accuracy. The lines were planned as follow:

Flight line direction: 3 lines north – south and 3 lines east – west and 1-line NW-SE

All GPS with IMU data was processed using PosPac Applanix software v.8.3. and the laser data was extracted using LMS v.4.3 The GPS antenna position in the airplane was calculated by post-processing the raw data at 1 second intervals for the entire flight.

The calibration values used for this project are as follows:

imu_ex: 0.049404867 arcsec
imu_ey: -0.062994531 arcsec
imu_ez: -0.131591982 arcsec

8. Quality Control

The LiDAR data consistencies have been checked between the flight lines using Terrascan software.

Comparison of Bare Earth LiDAR data with Ground Survey Values

According to ASPRS guidelines, the vertical accuracy of LiDAR is as follows:

$$RMSE_z = \text{Sqrt}[\sum (Z_{Lidar(i)} - Z_{check(i)})^2 / n] = 0.03 \text{ m}$$

Where the "Check" refers to the ground truth (In this project, we used survey points which are at least three times more accurate than the individual LiDAR points) and n is the number of check points. LiDAR 2019 was checked vs ground survey point. A total of 257 check points were used for this analysis.

Average dz	-0.005
Minimum dz	-0.150
Maximum dz	+0.090
Average magnitude	0.021
Root mean square	0.029
Std deviation	0.029

9. Deliverables

Final output data is provided in NAD83CSRS UTM N8 and the elevations are based on CGVD28 HT2 geoid model. The deliverables include:

- Bare Earth & Thinned model key points in las, xyz
- Non Bare Earth in las format
- Index map
- 15 cm Orthophoto
- Technical report