

# GeoYukon: Printing custom maps





# Outline

- This session will cover:
  - Getting started with GeoYukon
  - Explore the layer panel and menus
  - Labeling tips and tricks
  - Text and mark-ups
  - Working with layer transparency
  - Explore the Export tool
  - Explore the Print tool
  - Printing a custom map



# Introduction

Maps are used for many reasons. Whether it is for a permit application, to include in a report, or help plan a backwoods adventure.

Creating a custom map requires mapping data and software.

GeoYukon provides the data and mapping tools in one package - no special software required!



# Getting started

- Starting GeoYukon
  - Open a browser window and visit <https://yukon.ca/geoyukon>
  - Click **View GeoYukon**



**View GeoYukon**



# A quick orientation

- **Layers**
  - Panel to the left
  - GeoYukon layers are datasets for map display
  - Use the **Layer collections dropdown** to select a theme and display associated layers



# A quick orientation

- **Toolbars**
  - Toolbars are found at the **top of the screen**.
  - Tools can search, interact with data, export maps, download files and more.
- **I want to... menu**
  - List of common tasks



I want to...



# Map tools

- Tools found in the map window

**Zoom tools** – zoom in and out in the map

**Bookmarks** – center the map on a Yukon community

**Find your current position** – Use your device location center the map

**Select a Basemap** – change the background map

**Coordinates** – change the map's coordinate system

**Scale** – Choose a scale for the map

**Overview map** – Navigate the view in the map window using an overview of the Yukon



# Navigate the map

- Zooming and panning
  - Zoom buttons vs zoom box
- Bookmarks
  - Community bookmarks
  - Custom bookmarks
- Navigation toolbar
- Overview map



# Demo

Map tools

Navigating the map



# Using the layer panel

- Layer collections
- Controlling visibility
- Accessing layer menus



# Demo

Layer collections overview

Layer tools overview

Layer menu overview

# GeoYukon imagery

- All Government of Yukon imagery
  - Aerial photographs and satellite imagery
    - Communities, roads and wilderness areas
    - High, medium and low resolution layers



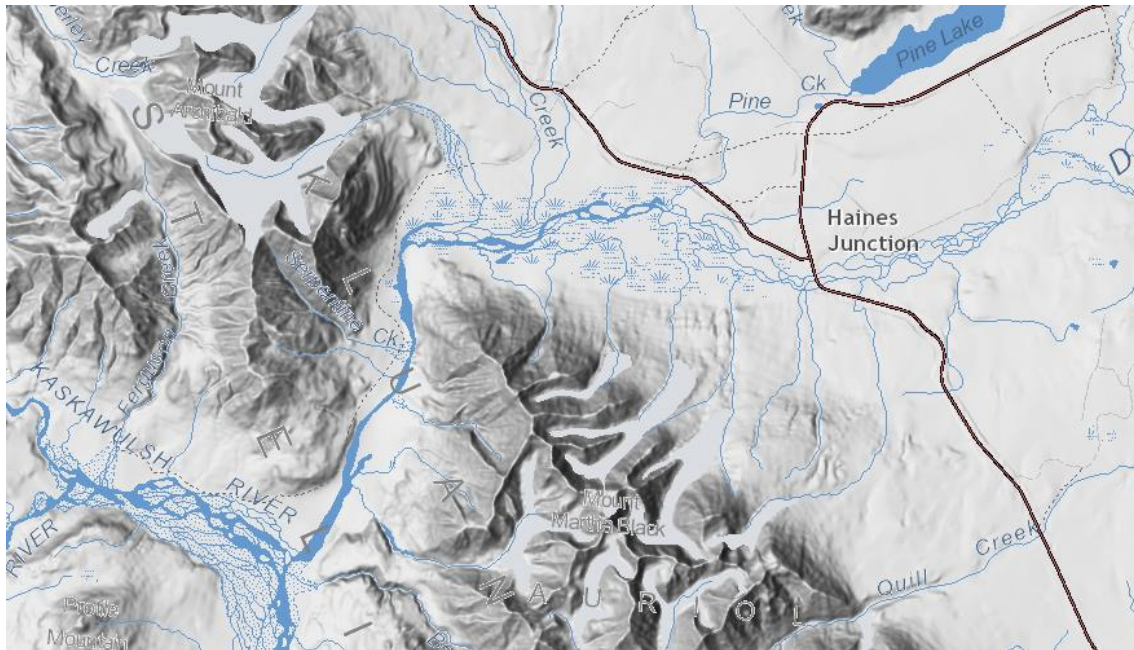
Government of Yukon



GeoYukon: Printing custom maps

# GeoYukon elevation

- All Government of Yukon DEMs
  - Add terrain to your map with the Elevation layer





# Demo

Imagery and Elevation layers overview



# Labels

- Labels display values from a layer's attribute table
  - The data behind the map
- Labels can be customized in each layer's menu
  - Adjust font styles, change the attribute, create complex labels.



# Demo

Displaying and customizing labels



# Text and mark-ups

- Add additional notes and graphics to your map
- Bring attention to features
- Tell your story more clearly



# Demo

Add text and mark-ups to the map window



# Printing your map

- Create a printable map or export the view to a file
- Print tool
  - Creates a printable map for typical desktop printers
- Export tool
  - Export an image of the map
  - Import a georeferenced image for use in your GIS software



# Print panel

- Variety of common paper sizes available.
- Add a title, notes, set the scale, center the view
- Set the resolution
  - Higher resolutions produce larger more detailed files.
  - Low resolutions exports are small, but may appear fuzzy if enlarged.



# Demo

Explore the Print panel  
Print a custom map



# Export tool panel

- Export the map window to a file
- Variety of common image formats available
- Check **Include Georeferenced Data** to use export in GIS software.



# Demo

Explore the Export tool

Export the map window to a file and open in GIS software



# Further information and support

## Further Information

- Visit <https://yukon.ca/maps> for the latest information about Government of Yukon spatial data and online services.
- [GeoYukon User Manual](#)

## Help and Support

- For questions and assistance with GeoYukon, or Government of Yukon spatial data, email [Geomatics.Help@yukon.ca](mailto:Geomatics.Help@yukon.ca).