

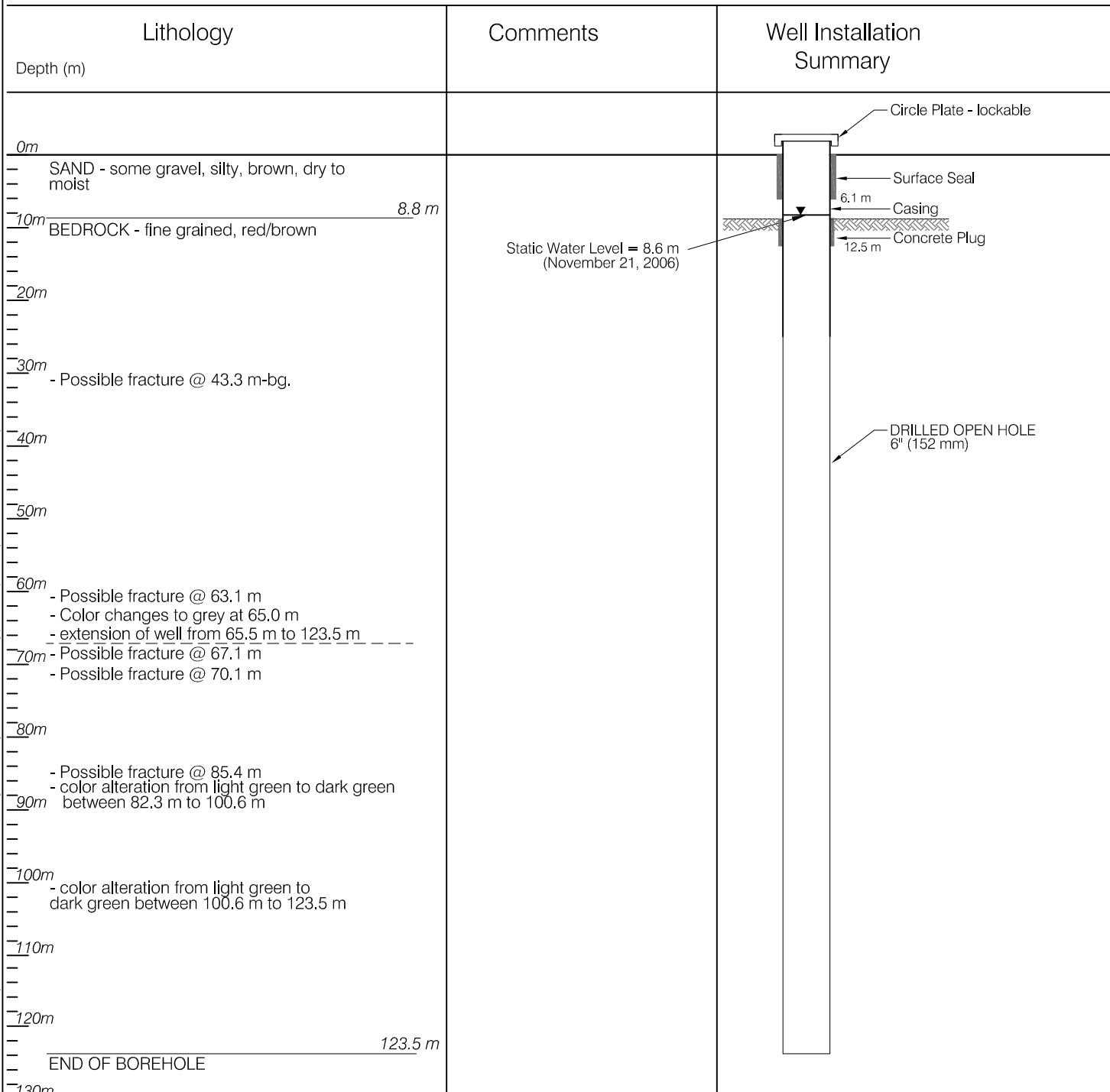
HYDROGEOLOGIC LOG

PURPOSE OF HOLE: Water Supply Well
 DRILLING METHOD: Dual Air Rotary
 START DRILLING: November 8, 2006
 SCREEN INSTALLED: N/A
 CONTRACTOR: Double "D" Drilling

BOREHOLE NO.

WELL 1950-B

GROUND ELEV. (m-geod): N/A
 TOP OF CASING (m-geod): N/A
 CASING STICK UP (m): 1.40 m
 DEPTH TO STATIC (m): 8.6 m below grd.
 DEPTH TO SCREEN TOP (m): N/A
 UTM Coordinates from GPS: Zone 7, 6741780 N, 483641 E



CLIENT



WELL COMPLETION REPORT
 IBEX VALLEY FIRE HALL - WHITEHORSE, YT

WELL LOG 1950-B

EBA Engineering
 Consultants Ltd.



PROJECT NO.
 1260008.001
 OFFICE
 EBA-WHSE

DWN
 JSB
 DATE
 January 30, 2007

CKD
 TAK/RMM
 REV
 0

Figure 3

\\eba.local\corp\Whitehorse\Drawings\S\Kondike-Haines Junction Hwy\1260008.001\Ibex Fire Hall Well Deepening\1260008 Figure 3 Well 1950-B.dwg [8.5 x 11] February 21, 2007 - 10:14am kcsyva