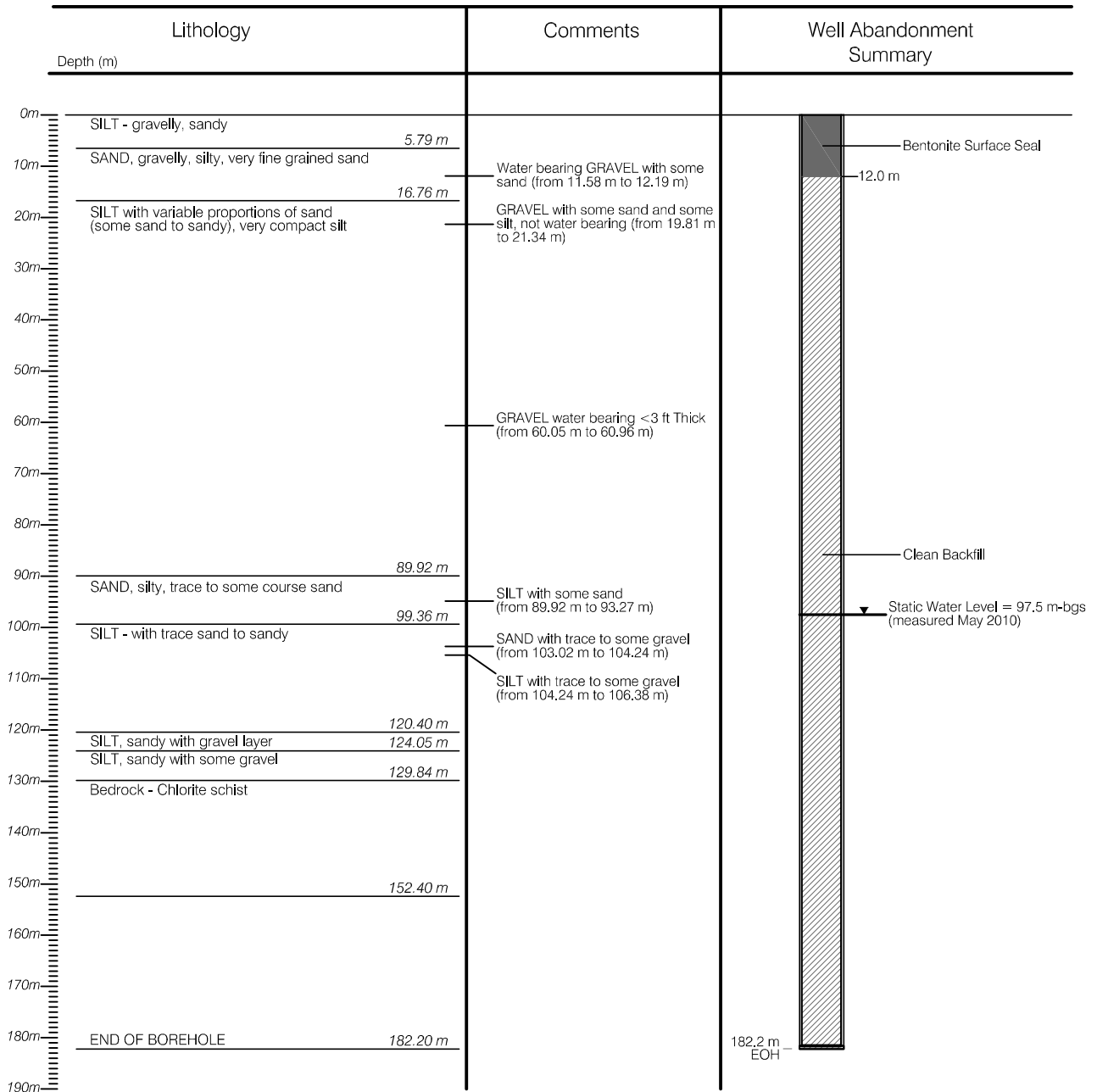


# HYDROGEOLOGIC LOG

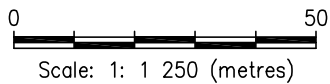
BOREHOLE NO. VOT TW10-1

PURPOSE OF HOLE: Community Water Supply Well, Abandoned  
 DRILLING METHOD: Dual Air Rotary  
 DRILLING DATE: 2010/05/28  
 SCREEN INSTALLED: 27.9 - 29.1 m bgs  
 CONTRACTOR: Impact Well Drilling.

DEPTH TO STATIC: 97.5 m bgs



\\Eba\local\corp\Whitehorse\Data\0201\Drawings\Teslin\W23101250\_Hydrogeology\W23101250\_Fig.3\_R0.dwg [VOT TW10 -1] August 12, 2010 - 2:06pm skilump



CLIENT

**VILLAGE OF TESLIN**

**VOT COMMUNITY WELL COMPLETION  
TESLIN, YUKON**

**WELL LOG FOR VOT TW10-1**

**EBA Engineering  
Consultants Ltd.**



PROJECT NO. W23101250	DWN CB	CKD SKS	REV 0
OFFICE EBA-WHSE	DATE July 2010		

**Figure 3**