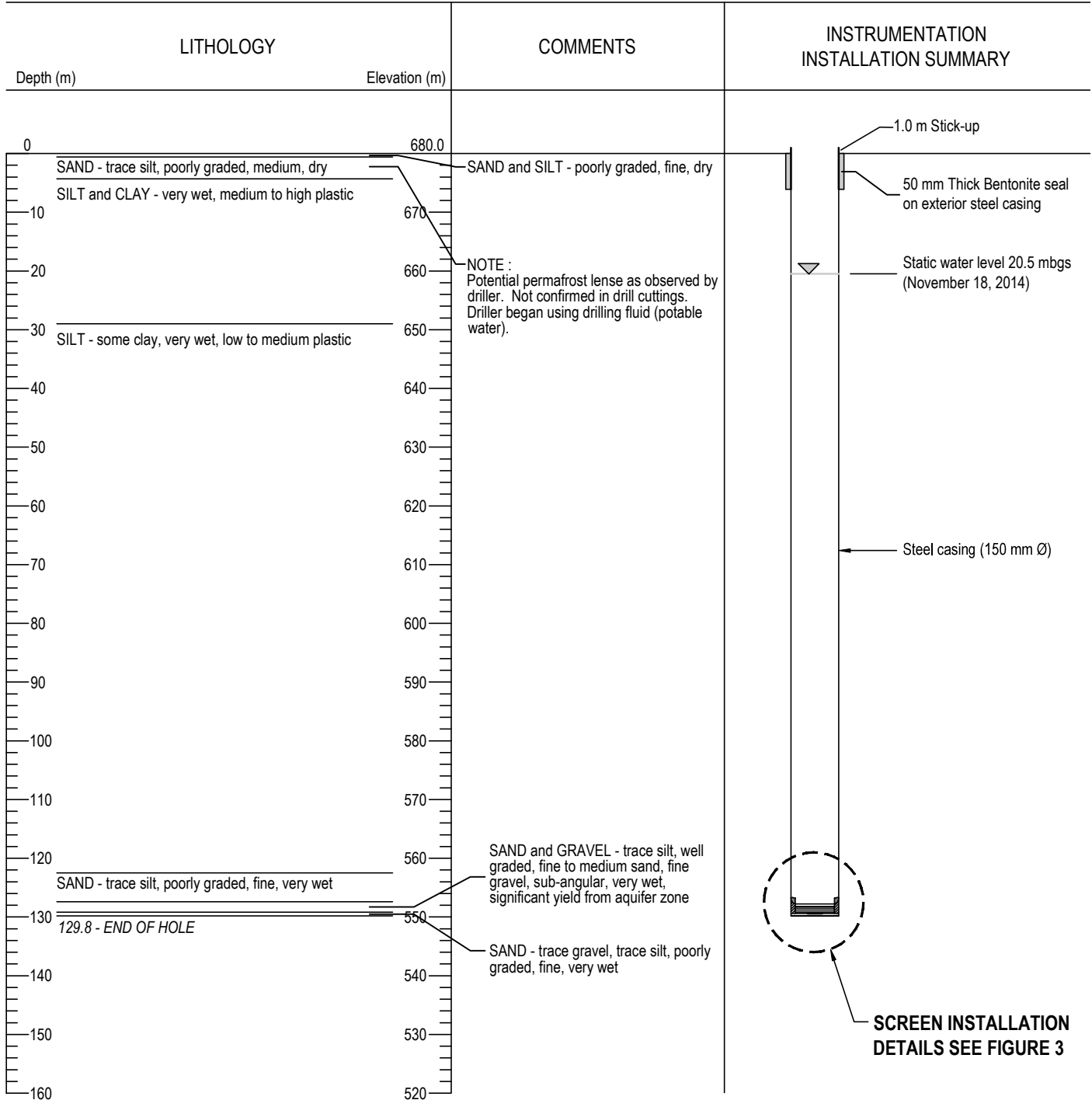


# BOREHOLE LOG

PROJECT NAME: TAKHINI RIVER SUBDIVISION WATER SUPPLY  
 LOCATION: TAKHINI RIVER SUBDIVISION  
 DATE DRILLED: NOVEMBER 13, 2014  
 DRILL TYPE: AIR ROTARY

BOREHOLE NO.: TW14-03  
 PROJECT NO.: ENVH2003066-01  
 GROUND ELEV.: 680.0 mamsl (TAKEN WITH HANDHELD GPS)  
 NTS (NAD-83): 6746646 N; 458317 E; Zone 8



CLIENT

CHAMPAGNE AND AISHIHIK  
FIRST NATIONS



TETRA TECH EBA

TAKHINI RIVER SUBDIVISION WATER SUPPLY

TW14-03  
BOREHOLE LOG

PROJECT NO.  
ENVH2003066-01

DWN  
CB

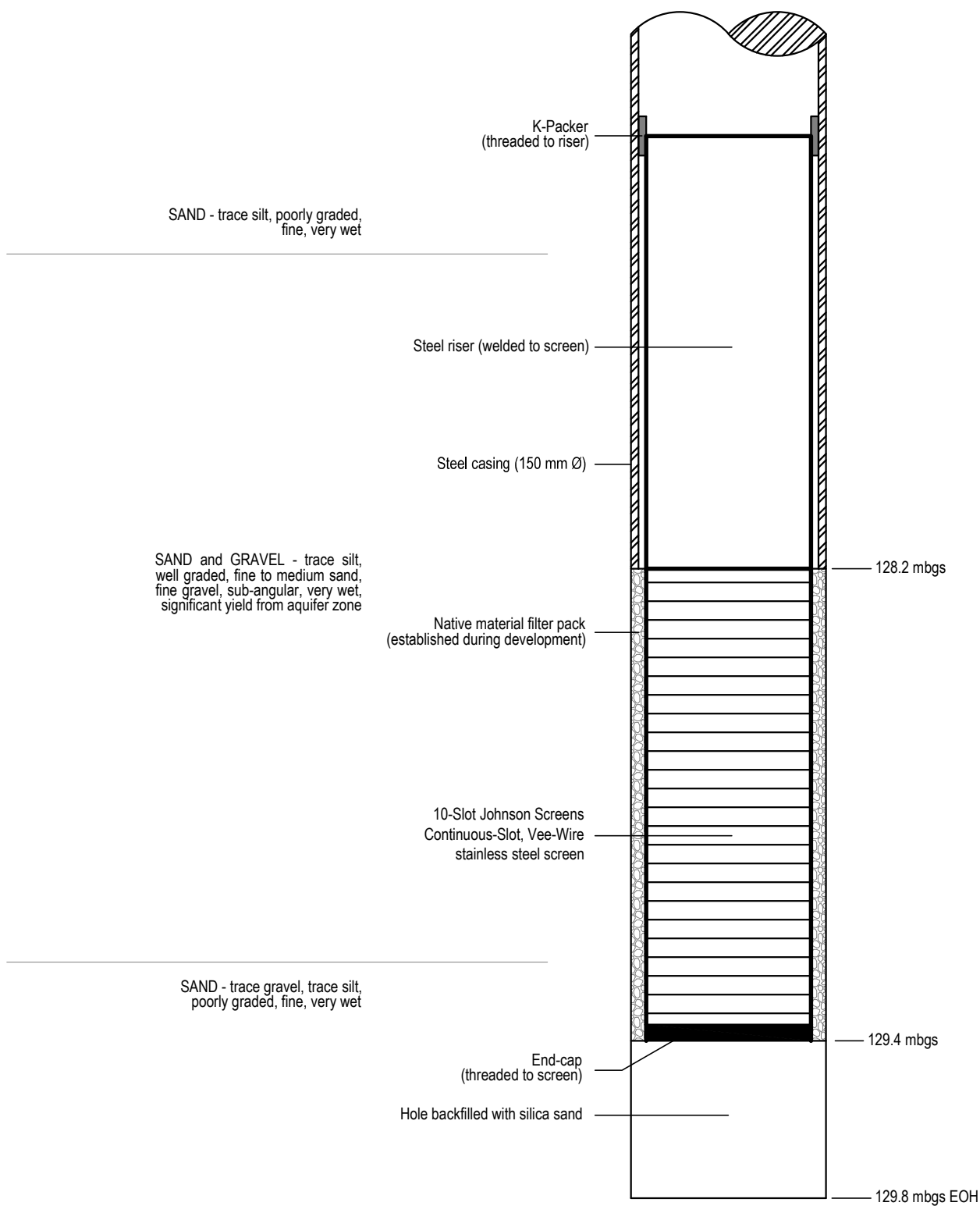
CKD  
GJE

REV  
0

OFFICE  
EBA-WHSE

DATE  
December 10, 2014

Figure 2



NOT TO SCALE

CLIENT

## CHAMPAGNE AND AISHIHIK FIRST NATIONS

## TAKHINI RIVER SUBDIVISION WATER SUPPLY

## SCREEN INSTALLATION DETAILS



**TETRA TECH** EBA

PROJECT NO.  
ENVH2O03066-01

DWN  
CB

CKD  
GJE

REV  
0

OFFICE  
EBA-WHSE

DATE  
December 10, 2014

### Figure 3