

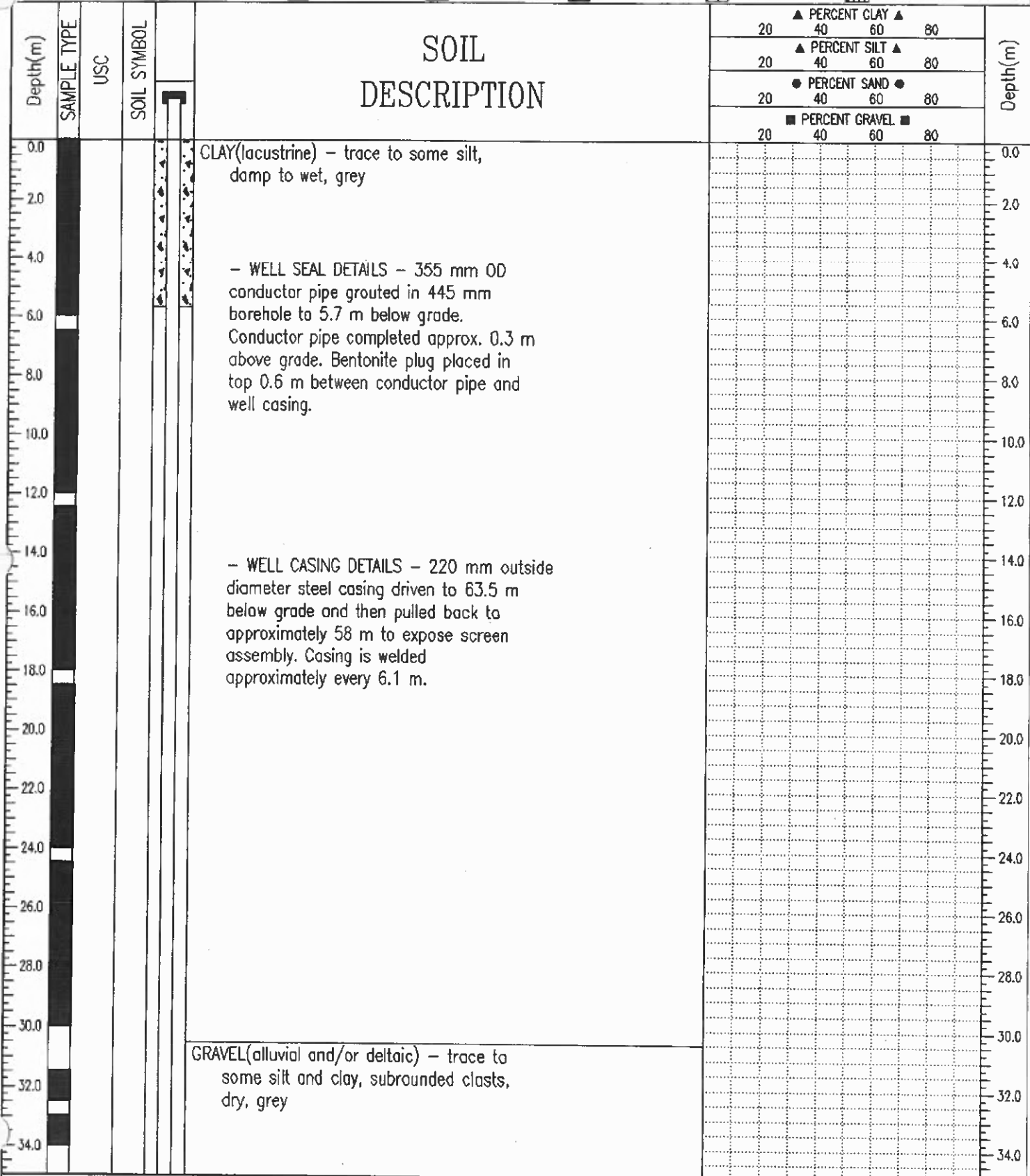
Tagish Well #2 **CTFN Well No. 2** CLIENT: Carcross Tagish First Nation BOREHOLE NO: 1240063-W2

Completion Report DRILL: Air Rotary - ODEX PROJECT NO: 1240063

Tagish, YT UTM ZONE: - N6886700 E541055 ELEVATION:

SAMPLE TYPE GRAB SAMPLE NO RECOVERY STANDARD PEN. 75 mm SPLIT SP. CRREL BARREL NW CORE

BACKFILL TYPE BENTONITE PEA GRAVEL SLOUGH GROUT DRILL CUTTINGS SAND



EBA Engineering Consultants Ltd.
Whitehorse, Yukon

LOGGED BY: RMM & CPC
REVIEWED BY: JRT
COMPLETION DEPTH: 63.1 m
COMPLETE: 03/10/01
Page 1 of 2

Tagish Well #2

CLIENT: Carcross Tagish First Nation

BOREHOLE NO: 1240063-W2

Completion Report

DRILL: Air Rotary - ODEX

PROJECT NO: 1240063

Tagish, YT

UTM ZONE: - N6686700 E541055

ELEVATION:

SAMPLE TYPE GRAB SAMPLE NO RECOVERY STANDARD PEN. 75 mm SPLIT SP. CRREL BARREL NW CORE

BACKFILL TYPE BENTONITE PEA GRAVEL SLOUGH GROUT DRILL CUTTINGS SAND

Depth(m)	SAMPLE TYPE	USC	SOIL SYMBOL	WELL INSTALLATION	SOIL DESCRIPTION	PERCENT CLAY ▲				Depth(m)
						20	40	60	80	
						PERCENT SILT ▲				
						PERCENT SAND ●				
						PERCENT GRAVEL ■				
						20	40	60	80	
36.0										36.0
38.0					GRAVEL (TILL) - sandy, silty, trace to some clay, dry, grey					38.0
40.0										40.0
42.0					SAND AND GRAVEL (alluvial and/or deltaic) damp, brown					42.0
44.0										44.0
46.0					SILT (transition) - sandy, trace of gravel, wet, grey, producing some silty water at low flow rate					46.0
48.0					GRAVEL (TILL) - silty, trace of clay, moist, grey					48.0
50.0					SILT (TILL) - some clay, trace gravel, moist to dry, grey - becomes sandy					50.0
52.0					GRAVEL (TILL) - silty, moist, grey					52.0
54.0					SAND (lacustrine) - trace silt, fine to medium grained, uniform					54.0
56.0										56.0
58.0					- some silt retrieved from cyclone					58.0
60.0										60.0
62.0					SILT (TILL) - reported by driller					62.0
64.0					END OF DRILLHOLE 63.1 m					64.0
66.0					- SCREEN ASSEMBLY DETAILS - 0.6 m riser pipe and k-packer fixed to 2 x 1.4 m long stainless steel v-wire 10 slot Johnson well screens. Screen set between 57.9 and 60.4 m below grade. Tailpipe below screens to 63 m below grade.					66.0
68.0										68.0
70.0										70.0

EBA Engineering Consultants Ltd.
Whitehorse, Yukon

LOGGED BY: RMM & CPC
REVIEWED BY: JRT

COMPLETION DEPTH: 63.1 m
COMPLETE: 03/10/01