

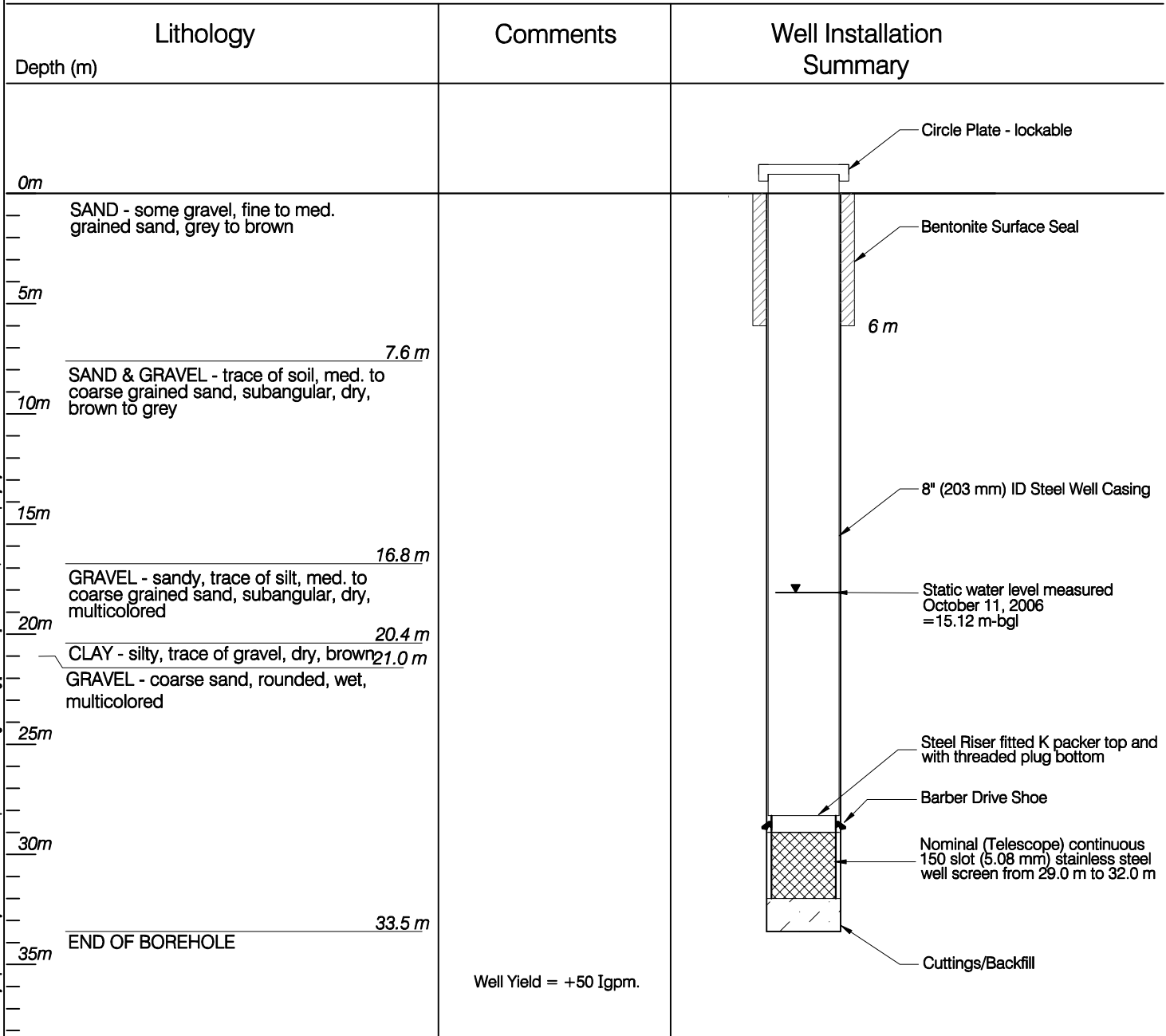
# HYDROGEOLOGIC LOG

BOREHOLE NO.

**BW06-01**

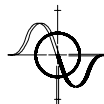
PURPOSE OF HOLE: Water Supply Well  
 DRILLING METHOD: Dual Air Rotary  
 START DRILLING: Sept. 27, 2006  
 SCREEN INSTALLED: Oct. 10, 2006  
 CONTRACTOR: Double 'D' Drilling Ltd.

GROUND ELEV. : 97.0 m-geod (approx.)  
 TOP OF CASING: 98.07 m-geod (approx.)  
 CASING STICK UP (m): 1.07 m above grd.  
 DEPTH TO STATIC (m): 15.08 m below grd.  
 DEPTH TO SCREEN TOP (m): 29.0 m



C:\Whitehorse\Detail\0201\Drawings\Pelly Crossing\1260026 Backup Well\1260026 Figure 1.dwg [8.5 x 11 PT] November 07, 2006 - 4:28pm jbuyc

CLIENT



**Quest Engineering Group**

**EBA Engineering Consultants Ltd.**



**WELL COMPLETION REPORT FOR SELKIRK FIRST NATION BACK-UP WELL - PELLY CROSSING, YT.**

**WATER WELL RECORD**

PROJECT NO. 1260026	DWN JSB	CKD KSJ	REV 0
OFFICE EBA-WHSE	DATE November 7, 2006		

**Figure 2**