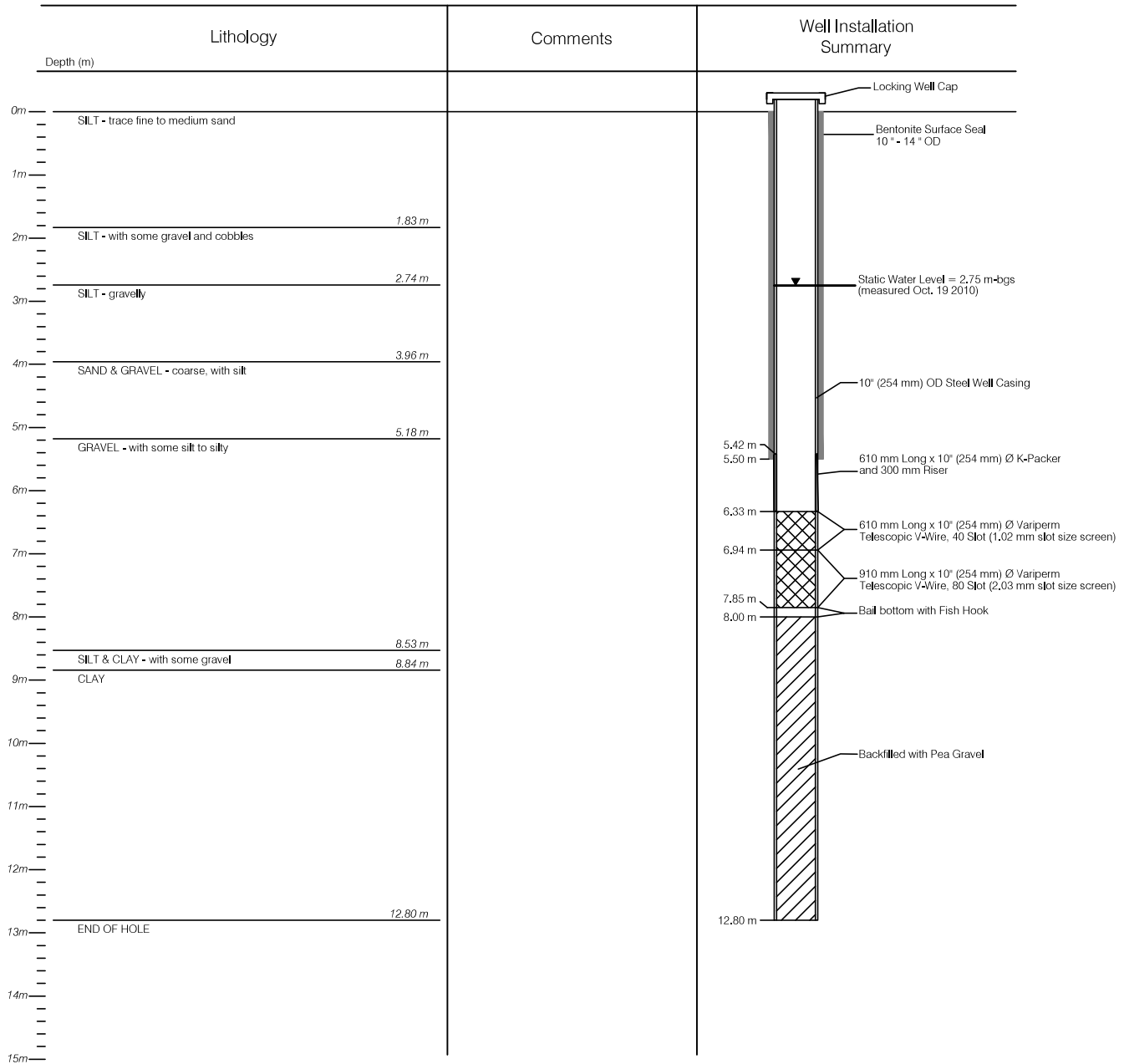


# HYDROGEOLOGIC LOG

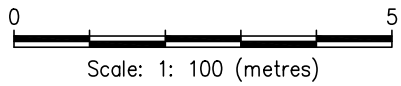
PURPOSE OF HOLE: Village of Mayo Backup Water Supply  
 DRILLING METHOD: Dual Air Rotary  
 DRILLING DATE: Sept. 27, 2010  
 SCREEN INSTALLED: 6.33 m - 7.85 m bgs  
 CONTRACTOR: Impact Well Drilling

BOREHOLE NO. VOM - COLD WATER WELL #2

CASING STICK UP: 0.64 m above grd  
 DEPTH TO SCREEN (m): 6.33 m bgs



C:\Whitehorse\Drawings\Mayo\W23101394\Fig.3\_R0.dwg [FIGURE 3] February 14, 2011 - 3:57:23 pm (BY: BUCHAN, CAMERON)



CLIENT

**EBA Engineering Consultants Ltd.**

**WELL COMPLETION REPORT  
MAYO, YUKON**

**WELL LOG**

PROJECT NO. W23101394	DWN CB	CKD RMM	REV 0	<b>Figure 3</b>
OFFICE EBA-WHSE	DATE February, 2011			