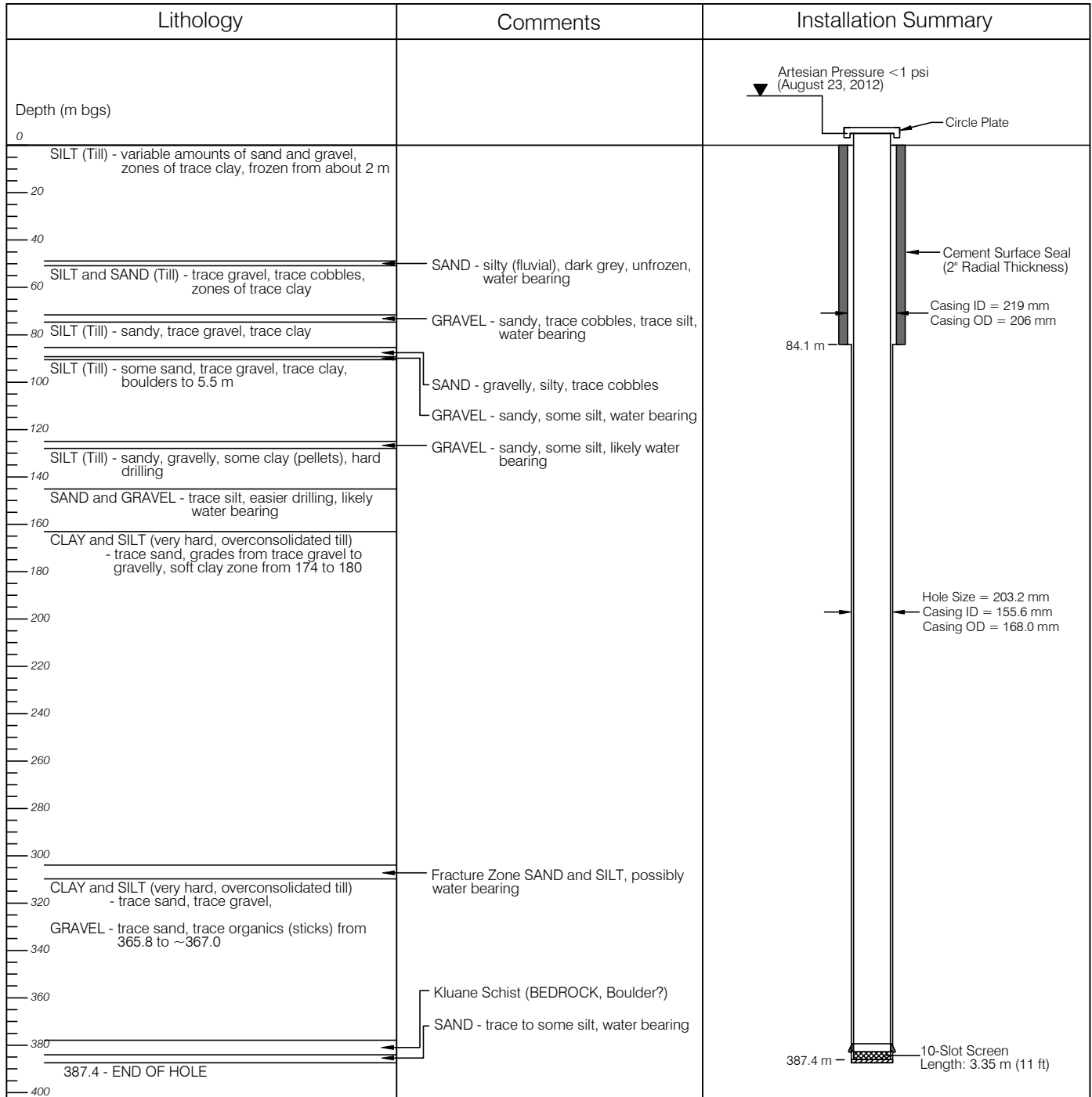




BOREHOLE LOG

PROJECT NAME: Burwash Georexchange Test Well
 LOCATION: Burwash Landing, Yukon
 CLIENT: Government of Yukon, Community Services
 DRILL TYPE: Mud / Air Rotary
 DRILL DATE: July 22, 2012

BOREHOLE NO.: KFN-L
 PROJECT NO.: W23101568
 UTM (NAD83, Zone 7): 6803843 N;
 608123 E



C:\Whitehorse\Drawings\Burwash\W23101568 Georexchange Test Well\W23101568 KFN-L Figs.3-5 RD.dwg [FIGURE 3] October 24, 2012 - 11:56:16 am (BY: BUCHAN, CAMERON)

| | | | | | |
|--|---|-----------|------------|----------|-----------------|
| CLIENT  Yukon Government | GEOEXCHANGE TEST WELL BURWASH LANDING, YUKON | | | | |
|  eba A TETRA TECH COMPANY | PROJECT NO. W23101568 | DWN CB | CKD SKS | REV 0 | Figure 3 |
| OFFICE EBA-WHSE | DATE October 3, 2012 | | | | |