

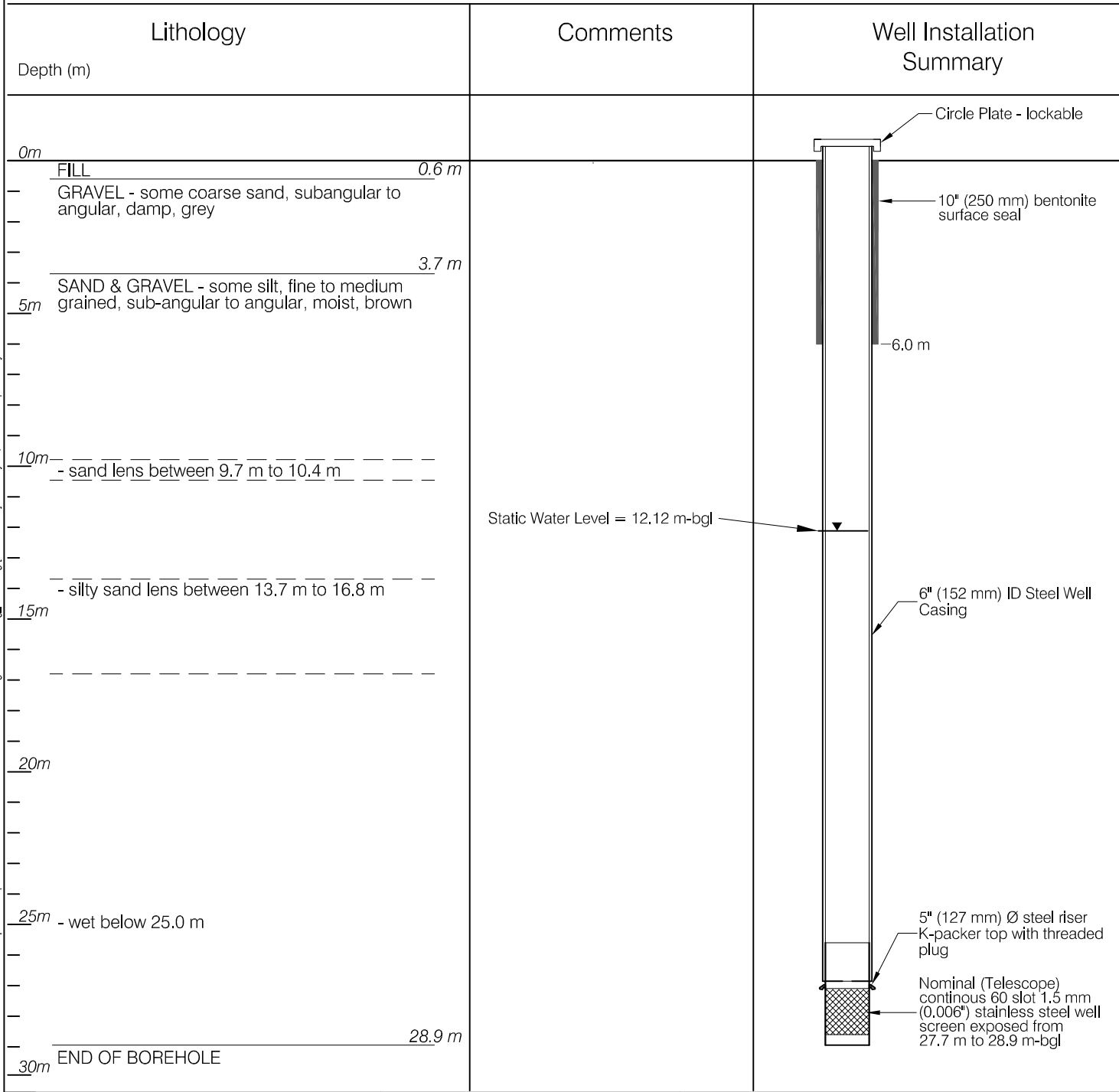
# HYDROGEOLOGIC LOG

BOREHOLE NO.



**WELL 3100-C**

PURPOSE OF HOLE: Water Supply Well  
 DRILLING METHOD: Air Rotary  
 DRILLING DATE: October 20, 2006  
 SCREEN INSTALLED: October 21, 2006  
 CONTRACTOR: Double D Drilling Ltd.

CASING STICK UP: 1.0 m -agl.  
 DEPTH TO STATIC: 12.12 m-bgl.  
 DEPTH TO SCREEN (m): 27.7 m



\\beba.local\corp\Whitehorse\Data\020\Drawings\Beaver Creek\1260028 Water Well Completion Report\1260028 Nelnah Bessie School\1260028 Figure 1 Well Log\_3100.dwg [WELL\_3100] February 15, 2007 - 3:53pm kcostya

CLIENT 	<b>WELL COMPLETION REPORT</b> NELNAH BESSIE JOHN SCHOOL - BEAVER CREEK, YT.			
	<b>WELL LOG 3100-C</b>			
<b>EBA Engineering Consultants Ltd.</b> 	PROJECT NO. 1260028	DWN JSB	CKD TAK/RMM	REV 0
	OFFICE EBA-WHSE	DATE January 30, 2007		

**Figure 3**