

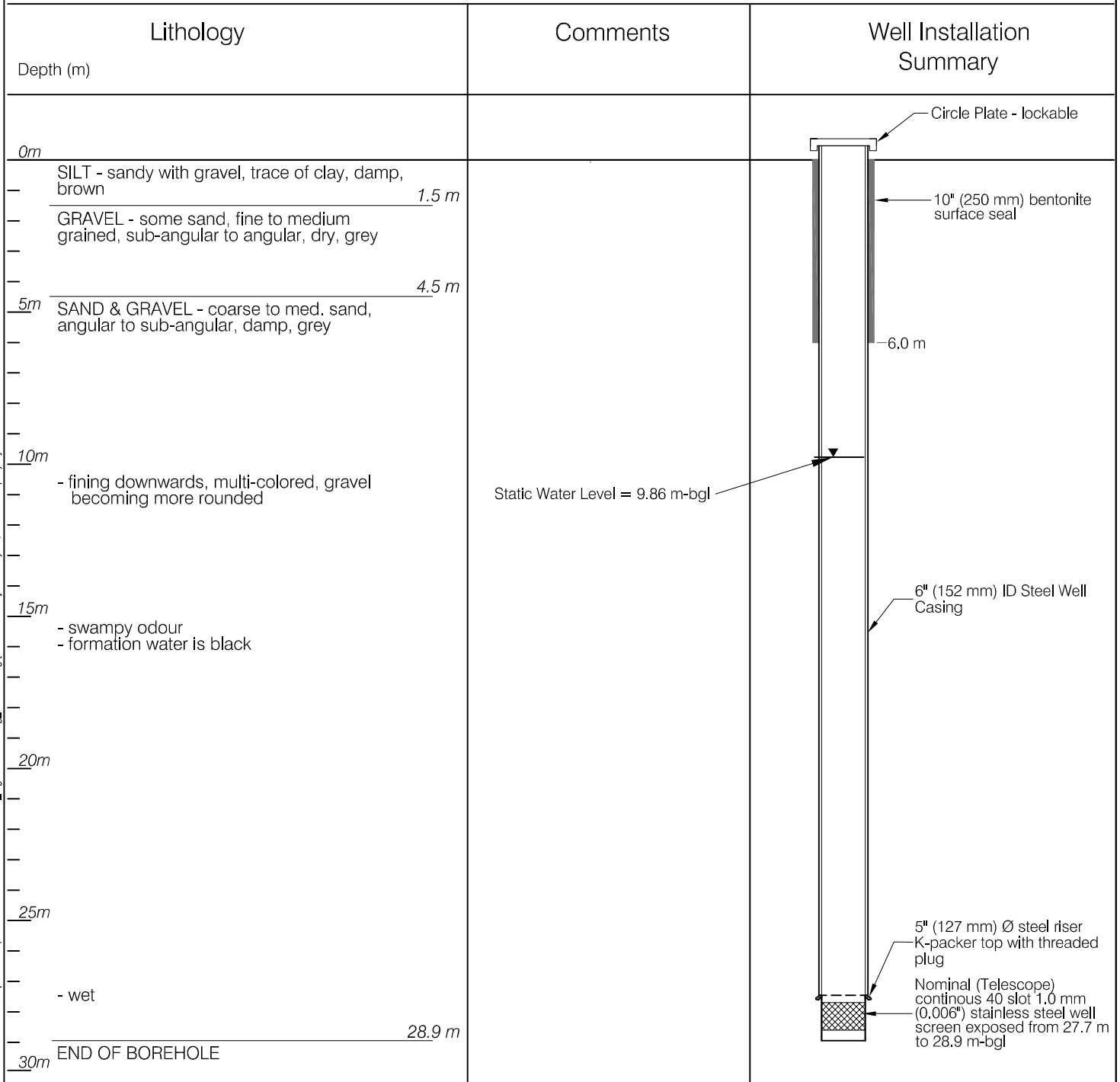
HYDROGEOLOGIC LOG

PURPOSE OF HOLE: Water Supply Well
 DRILLING METHOD: Air Rotary
 DRILLING DATE: October 15, 2006
 SCREEN INSTALLED: October 16, 2006
 CONTRACTOR: Double D Drilling Ltd.

BOREHOLE NO.

WELL 3125-B

CASING STICK UP: 1.0 m -agl.
 DEPTH TO STATIC: 9.86 m-bgl.
 DEPTH TO SCREEN (m): 27.13 m



CLIENT

Yukon
 Property Management Agency

WELL COMPLETION REPORT
 AIRPORT TERMINAL BUILDING - BEAVER CREEK, YT.

WELL LOG 3125-B

EBA Engineering Consultants Ltd.



PROJECT NO.
1260028
OFFICE
EBA-WHSE

DWN
JSB

CKD
TK/BEP

REV
0

DATE
January 9, 2007

Figure 3